



How we work...

Divisions represent the College locally and provide professional advice where required. College Members may opt to be members of the Division in which they either live or work but can only belong to one Division. Each Division comprises of all Members and Associates of the Royal College of Psychiatrists working or living within that area.

English Divisions

Eastern, London, Northern and Yorkshire, North West, South Eastern, South West, Trent and West Midlands.

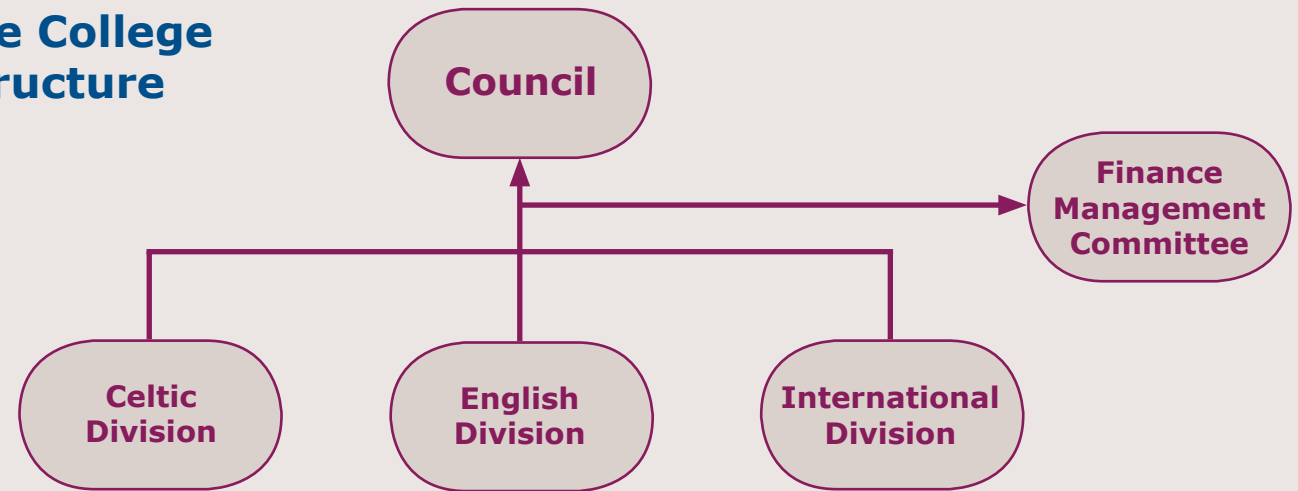
Celtic Divisions

Northern Ireland, Scottish and Welsh. The Celtic Divisions are very different from the other Divisions because they are based in countries with their own Assembly or Parliament, all of which have devolved responsibility for health. Celtic Divisions, in addition to the roles undertaken by the English Divisions, also work to engage politicians and policy makers in improving mental health services in their countries.

International Divisions

African, European, Middle Eastern, Pan-American, South Asian, Western Pacific. International Divisions are represented at Council by the President.

How Divisions feed into the College structure

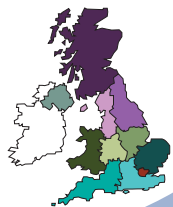


Each Division has links with the following Central College Committees:

- Council
- Faculty and Section Executives
- Central Policy Coordination
- English Policy/Jurisdictions Policy
- Education, Training and Standards
- Regional Advisors and Deputy Regional Advisors
- Specialty Doctors'
- Psychiatric Trainees'
- Public Education
- Workforce.

Executive Committees meet quarterly. Each Division has an elected Executive Committee, Chair, Vice-Chair and Finance Officer. The Chair of each Division is an ex-officio member of Council. Faculty and Section Representatives, Regional Advisors, Public Education Officers, Continued Professional Development Coordinators, service users and carers and representatives of the Education, Training and Standards Committee, Psychiatric Trainees' Committee and Specialty Doctors' Committee make up the full Executive Committee.

Divisions debate College policy and National Health Service (NHS) policy in relation to mental health, and report back through the English Policy Committee, Jurisdictions Policy Committee and Central Policy Coordination Committee. Each Division has a dedicated consultation webpage.



What we do...

Academic Meetings are held at various locations within each Division throughout the year. Meetings are always well attended and provide excellent opportunities for networking with local colleagues. Programmes cover a variety of topics and dedicated sessions are often held for trainees and specialty grade doctors. Divisions organise prizes and provide opportunities for members to present at academic meetings.

Participating in central initiatives and Presidential campaigns form part of Divisional activities.

Newsletters are displayed on the Division's webpage and are either posted or emailed to the membership. If you would like to contribute an article, advertise an event or share your views with the local membership, please contact your Divisional Office.

Divisions liaise with the press and deal with queries from members of the public, patients and NHS colleagues in consultation with the relevant departments at the College headquarters in London.

Eastern Division

www.rcpsych.ac.uk/college/divisions/eastern.aspx

London Division

www.rcpsych.ac.uk/members/divisions/london.aspx

Northern & Yorkshire Division

www.rcpsych.ac.uk/members/divisions/northernyorkshire.aspx

North West Division

www.rcpsych.ac.uk/members/divisions/northwest.aspx

South Eastern Division

www.rcpsych.ac.uk/members/divisions/southeast.aspx

South West Division

www.rcpsych.ac.uk/members/divisions/southwest.aspx

Trent Division

www.rcpsych.ac.uk/members/divisions/trentdivision.aspx

West Midland Division

www.rcpsych.ac.uk/members/divisions/westmidlands.aspx

Royal College of Psychiatrists in Northern Ireland

www.rcpsych.ac.uk/members/divisions/northernireland.aspx

Royal College of Psychiatrists in Scotland

www.rcpsych.ac.uk/members/divisions/scottish.aspx

Royal College of Psychiatrists in Wales

www.rcpsych.ac.uk/members/divisions/welsh.aspx

Division websites are designed to be as informative and inclusive as possible.

Divisions

