

QNIC activity – Reports and reviewers

Cycle 10

Reviews

- 100 member units
- 98 units receiving reviews – 2 units not having reviews: 1 unit not open yet, 1 due to close
- Of the 98 reviews, 9 units received an accreditation review and 89 received a peer review visit
- Within the September 2010 – May 2011 time period 8 reviews were postponed : 2 due to not enough reviewers, 2 due to no self review returned in time, 2 due to snow, 1 unit moving, 1 not enough staff provided on review day by host unit

Reviewers

- 1 review only had 2 reviewers: due to a last minute change in review date
- 97 reviews had either 3 or 4 reviewers
- 45 (46%) reviews had teams of 1 medical, 1 nursing and 1 MDT representatives
- Of the 98 reviews, 62 (63%) were led by QNIC project staff, 36 (37%) led by external reviewers or other CCQI staff (Rachel and Carly were included in the external reviewers numbers)

Draft Reports

Cycle 10 – Accreditation

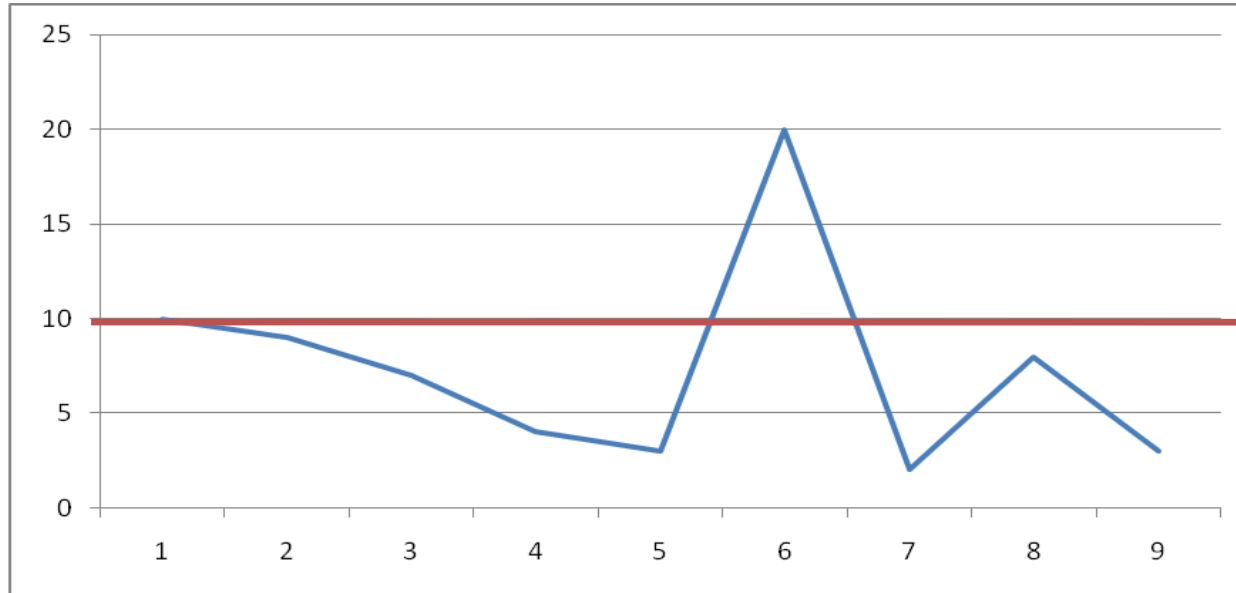


Figure 1: Number of working days taken to write draft accreditation reports

CTG standard: All draft reports to be sent within 10 working days.

Cycle 10: Out of 9 reviews we achieved 8 (89%) draft reports sent within 10 working days. Average time taken to send draft reports: 7 days. Range: 1 – 20 days.

Cycle 10 – Peer Reviews

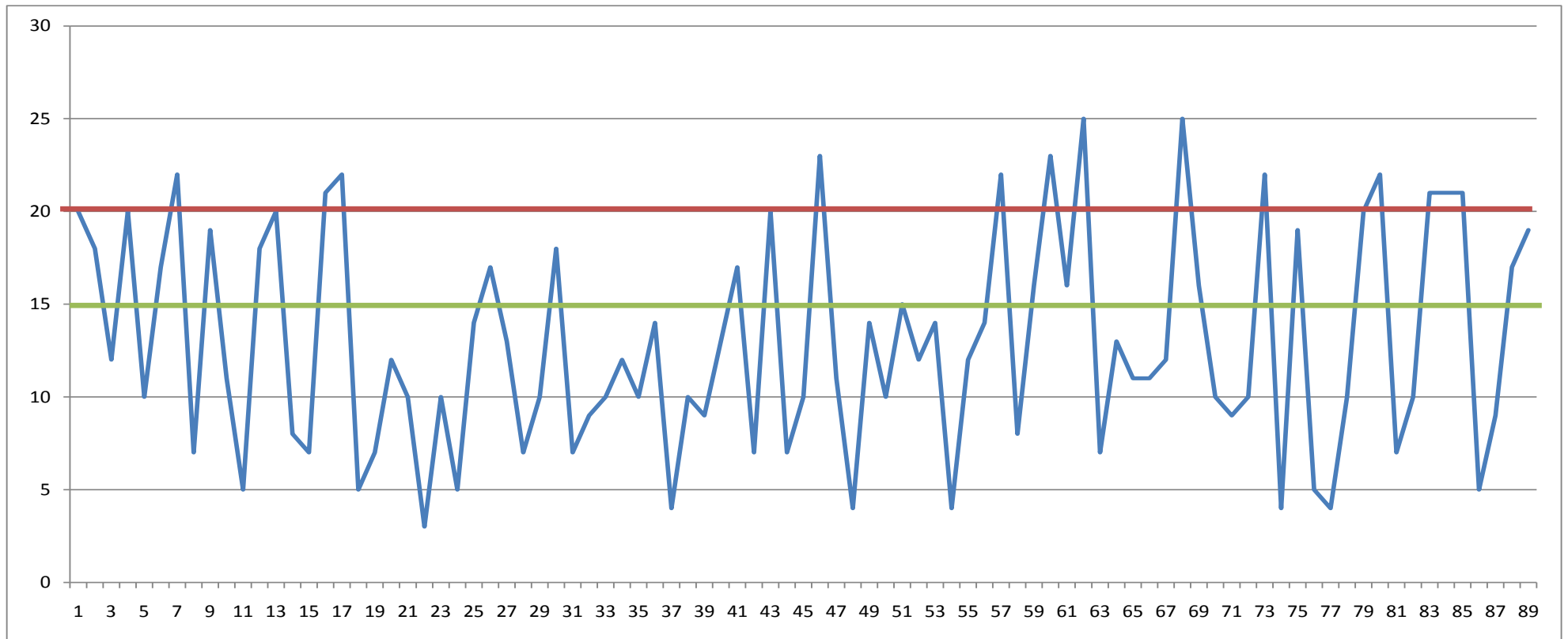


Figure 2: Number of working days taken to write draft peer review reports

QNIC standard: All draft reports to be sent within 1 month.

CTG standard: All draft reports to be sent within 20 working days, 75% of draft reports to be sent within 15 working days.

Cycle 10: Out of 98 reviews we achieved 96 (98%) within 1 month, 85 (87%) within 20 working days, and 67 (68%) within 15 working days. Average time taken to send draft report: 13 working days Range: 3 – 25 working days.

Comparison between Cycle 9 and Cycle 10

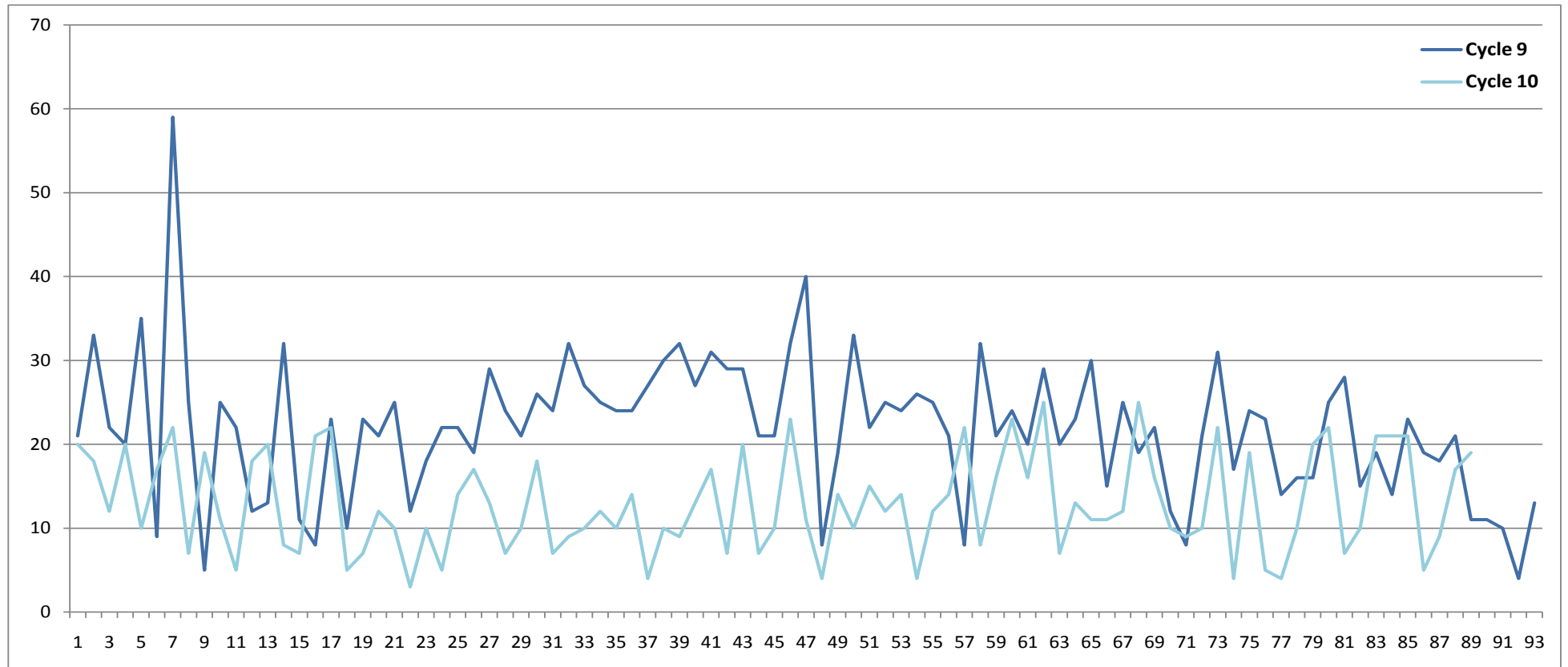


Figure 3: Number of working days taken to write draft peer review reports in Cycle 10 compared to Cycle 9

Cycle 9: Out of 93 reports we achieved 55 (59%) within 1 month, 43 (46%) within 20 working days, and 21 (23%) within 15 working days. Average time taken to send draft report: 22 working days. Range: 4 – 59 working days.

This in a 39% improvement of reports sent within 1 month, 41% within 20 working days, and 45% within 15 working days. An reduction in the average time taken of 9 working days, from 22 working days to 13 working days.

Well done everyone!

What changed between the two years?

- Introduction of honorary contract lead reviewers
- Increase in number of reviews led by external reviewers – increase from 27% to 37%
- Spread of reviews more evenly within the review period taking into account distance travelled
- Getting more peer reviewers signed up at the beginnings of the cycle so project team don't have to spend time doing this during the peer review period
- The project team remaining stable and becoming more familiar with the processes
- Introduction of accreditation

What continues to be the barriers?

- 4 out of 5 of the project team working across 2 projects, especially the impact of the Perinatal network having reviews during the same period
- Accreditation reports taking priority over peer review reports
- WTE of staff remains the same but with an increase in members
- Time taken to send final reports and chasing comments on draft reports from members