



# GREENTREES

## The Practical, Unutterable Reality of User Involvement

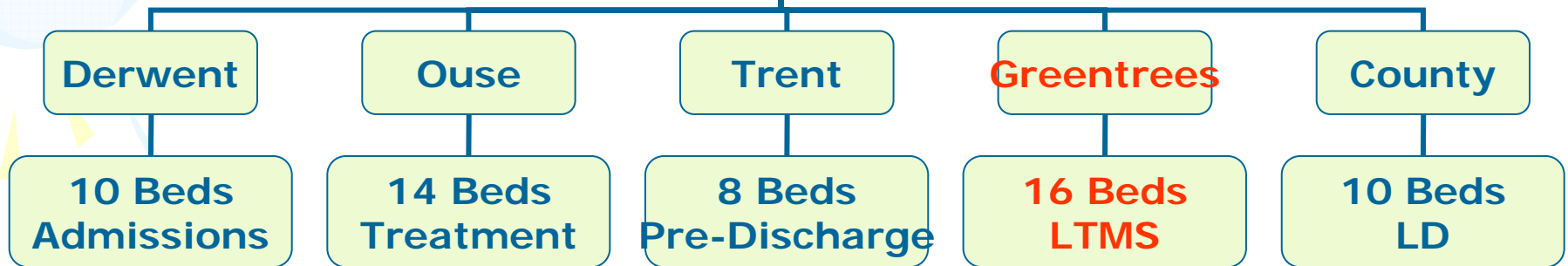
Humber Mental Health




Teaching NHS Trust



# The Service

## Forensic Mental Health & Learning Disabilities Service




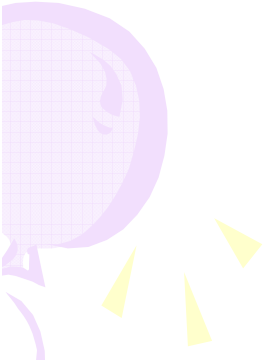


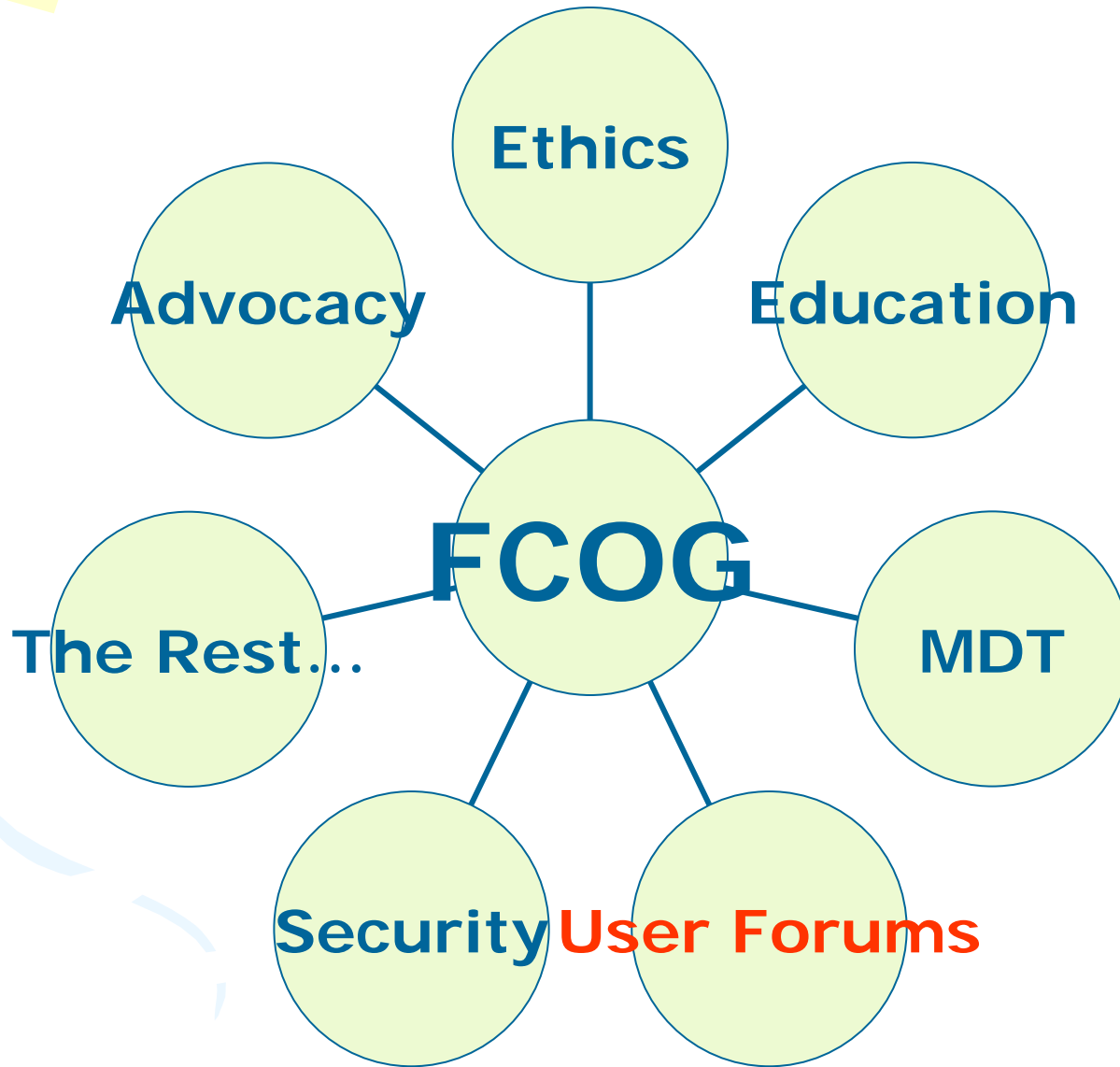
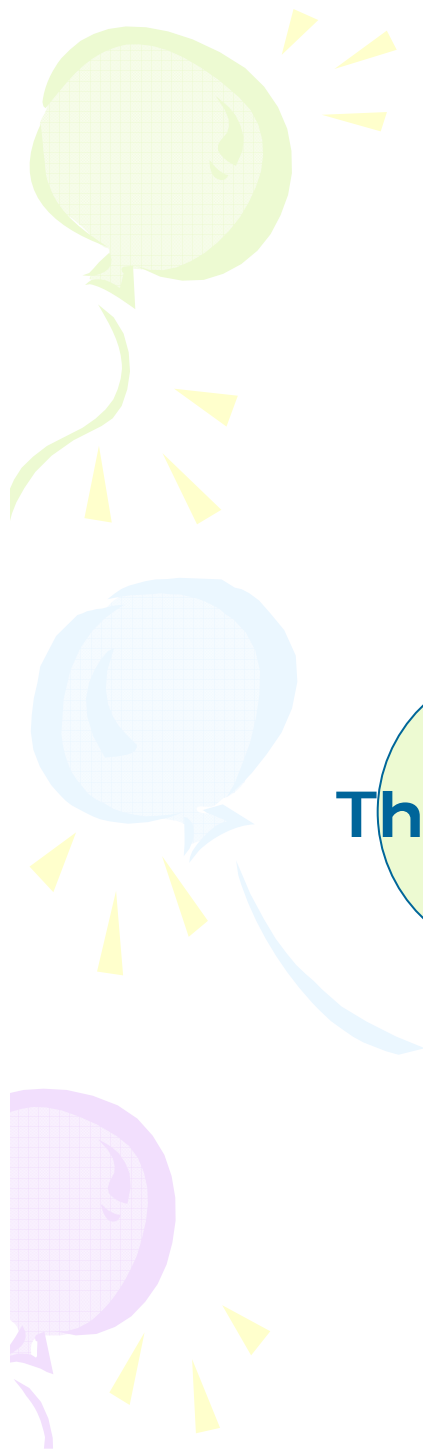
# Reducing violence in a forensic mental health unit: a seven-year study (Green & Robinson, 2005)

1. Multi-professional working,
  2. Review of incidents,
  3. Team 'health' & programme integrity,
  4. Integrated clinical pathways,
  5. A planned environment, continuously evaluated,
  6. Training,
  7. Recognising high risk times / situations,
  8. Co-ordinated clinical attention to highly aggressive individuals,
  9. A range of activities,
  10. User involvement.
- 
- 



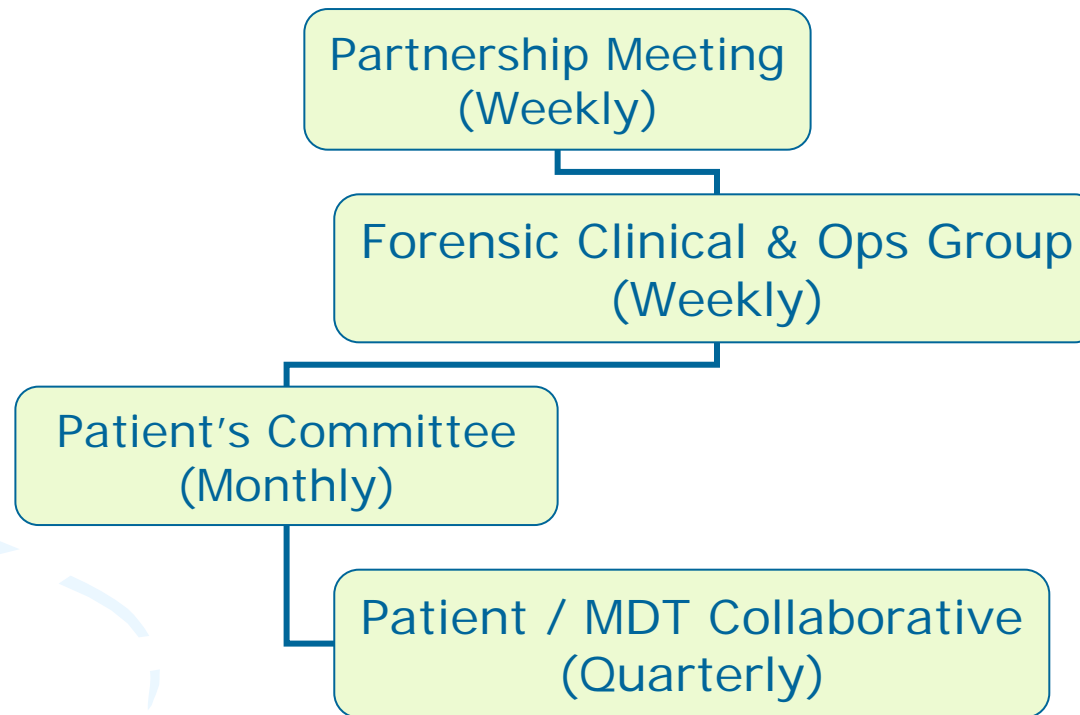
# Greentrees: Background

- Long Term Medium Secure,
  - Tilt / Accelerated Discharge Programme,
  - Opened 2003,
  - 16 Beds,
  - Patients predominantly from Ashworth & Rampton High Secure Hospitals.
- 
- 





# The User Pathway





# More Examples

- **Recruitment,**
  - **Catering Quality Circle,**
  - **Service Planning,**
  - **Consultation,**
  - **Expert Opinions,**
  - **Service Representation,**
  - **Stores Ordering!**
- 
- 

# Outcomes

- **Enhanced Autonomy,**
- **A Clearer Process,**
- **Increased Patient Satisfaction,**
- **Swifter Resolution,**
- **Reduction in Conflict,**
- **Fewer episodes of violence,**
- **Challenges for the Service.**

