



**Inside this Issue**

Message from Helen Matthews	1
ACCEA News	2
Mental Health in	2
Events 2009	2
Check In—Check Out	3
Fellowships	3
Joint Annual Meeting	4
Current Consultations	5
Division	6
Executive	7
Further Information	7

**Special points of interest:**

- FAIR DEAL Campaign
- Primary Care
- Articles
- ACCEA 2010
- Welsh Division Events
- Vacancies on Executive Committee
- Divisional 'Who's-Who'

*Message from Helen Matthews, Chair*

I am delighted this first Welsh Division Newsletter has come to fruition. It will hopefully enhance the professional infrastructure for all psychiatrists in Wales. Change is very much the flavour of working in Wales in 2009. I have been trying to ensure that mental health and learning disability services receive a high profile during re-organization. The final wave of consultation planning and delivery is currently underway. Please let me know your views on current Welsh consultations. The Welsh Medical Committee has established a time limited group Chaired by Richard Lewis to highlight Mental Health issues for all medical specialties.

In 2008 the College launched the [FAIR DEAL](#) campaign. The Welsh launch will be taking place in Wrexham on 13th November 2009. This event will be co-hosted with the Welsh Psychiatric Society supported by the Academic Departments of Psychiatry. I am delighted that

Professor Dinesh Bhugra, President of the College and Dr Tony Jewell, Chief Medical Officer, WAG will contribute to this launch. The later launch will hopefully be at an appropriate time in the early development phase of the new Welsh Local Health Boards.

2008/2009 has also brought major legal changes with an amended Mental Health Act and augmented Mental Capacity Act, including Deprivation of Liberty Safeguards. The College produced an English Version policy on S136 implementation, this report has been formally considered by WAG and we have been encouraged to develop a Welsh version. Mark Winston, Chair of General & Community Faculty in Wales has kindly led on this work for the Division.

Strategically the College's current activities include the President starting a process of re-evaluating the role of the psychiatrist. Drivers for this include the ongoing difficulties of recruitment into

psychiatry even with significantly enhanced UK medical student numbers; concerns about 'New Ways of Working' being erroneously introduced in some services as a method of reducing patients access to medical specialties; perceived issue of the 'medical model' and the Presidents Professional Campaign. Hopefully you will have had an opportunity to have already seen some products of the discussion via your Faculty and Section structure. Your input would be appreciated.

Other incentives include a project across all Jurisdictions on outcome measurement. The Division is arranging a seminar on this on the 2nd July in Wales. A review of the College's Research and Training Unit was presented at the last Central Executive Committee, I am sure many of us are familiar with some of its activities in the areas of audit standards and accreditation schemes. Both these areas are of importance to us all especially in the climate of relicensing and

## *Message from Helen Matthews, Continued.....*

re-validation . The tension for the College is between its remit as a membership organisation and its relationship with professional and service regulatory bodies.

My aims over the next year are to enhance the partnership arrangements within the Division and I hope to meet as many divisional members as possible as we form new organisational structures and further develop as Faculties, Sections and Special Interest Groups. Within Wales I aim to champion the need for patients to receive high quality Psychiatric input. Within the College the Jurisdictions are developing a distinctive role sometimes providing the vital balance to ensure the College's international role versus becoming excessively 'anglo-centric'.

In 2010 the Division will be hosting the Celtic Psychiatric meeting.

Finally, sincere congratulations to our new fellows and members. Thank you to all Divisional Executive colleagues and Siobhan Conway, Divisional Manager who has just ended a busy first year with the College.

A version of the Divisional 'who's-who' can be found on page 6 of this newsletter.

Best wishes for a good summer

Helen Matthews, Chair, Welsh Division

## *Mental Health in Primary Care*

### *Dr Ray Jacques*

The Welsh Division of the College are looking to develop links with the Royal College of General Practitioners in Wales to develop a creative dialogue between secondary and primary care. Ray Jacques is taking the Welsh Executive Division lead and has made links with Dr Huw Lloyd as lead of the Core Group of the Wales Mental Health in Primary Care Network (WaMH in PC). The network meets regularly and

has developed Gold Standards for Primary Care Mental Health in Wales.

Information is available on the website  
[www.wamhipc.org.uk](http://www.wamhipc.org.uk)

For further information please contact Dr Ray Jacques  
[Ray.Jacques@abm-tr.wales.nhs.uk](mailto:Ray.Jacques@abm-tr.wales.nhs.uk)

With best wishes

Ray Jacques

## *ACCEA/Clinical Excellence Awards 2010*

Those wishing to apply for ACCEA/Clinical Excellence Award 2010 should submit their CVQ and the covering College sheet to Sue Duncan, ACCEA Administrator, RCPsych -

[sduncan@rcpsych.ac.uk](mailto:sduncan@rcpsych.ac.uk) by **Friday 24th July 2009.**

Details of the procedure and relevant forms can be found at:

<http://www.rcpsych.ac.uk/members/yourmembership/awards2009.aspx>

You are politely reminded that if you applied for an award last year (2009) and are waiting for the results, you should also apply for an award in the 2010 round.

Dr Stephen Hunter will be Chairing the Welsh Division Recommendation Committee.

As many of you are aware, the Welsh submission forms are slightly different from the English version. If you could please submit your application using the College generic forms in the first instance by the date above, you will be notified via email through the Division when the Welsh version's become available.

## *Events in 2009*

- European Perspectives on Forensic Mental Health Services and Training in Forensic Psychiatry
- General Adult and Community Faculty Meeting, 15th & 16th October 2009, Hilton Hotel, Cardiff
- Old Age Faculty, Psychogeriatric Symposium, 7th October 2009, Cardiff
- Child & Adolescent Faculty Meeting, 16th October 2009, Llangammarch Wells, Wales
- Welsh Division RCPsych and the Welsh Psychiatric Society Annual Meeting, 13th November, St Davids Park Hotel, Ewloe, Flintshire
- Perinatal Section Scientific Meeting, 27th November, London

For further information please contact  
[sconway@welshdiv.rcpsych.ac.uk](mailto:sconway@welshdiv.rcpsych.ac.uk)

## *Check In—Check Out (article)*

*Dr Robert Colgate, Public Education Officer*

In March 2009, the Press Complaints Commission published a new Editors' codebook, drawing together recent judgements and changes in emphasis of existing advice. Suicide is highlighted as an important area. Magazine and newspaper editors are now encouraged to take greater responsibility for the material that they publish and to modify their activities voluntarily.

In the context of suicide prevention, even a small improvement in the activities of the media may be extremely beneficial. It is now recognised that 'sensationalist' reporting of completed suicide is associated with further similar deaths, a process known as suicide contagion. An outline of recent well publicised events in Bridgend in South Wales is provided in the Codebook as an illustration of the adverse impact of irresponsible press

coverage.

However, access to local mental health services can still be an issue. Prompt and timely interventions require thoughtful and carefully organised services. The attitude of the local community towards mental health services will also be important. It is less well known that several additional measures were taken in Bridgend in order to try and contain the suicide contagion.

Allocation of Clinical Psychology sessions were provided to enable urgent access to problem solving techniques. Additional mental health nursing staff were added to the local crisis team and existing front line staff encouraged to undertake the acute assessments in pairs. Increased clinical supervision from senior staff was also maintained over an extended period.

Equally important was the establishment of three tiers

of formal managerial joint agency working widely between the Trust, the Local Authority and South Wales Police. Finally the importance of representation from the voluntary sector, especially the role of the Samaritans, was recognised with a contribution at all three managerial levels.

Weaknesses and shortfalls in local mental health services still remain. Certain demographic groups such as young adult males will not always engage easily with statutory services. However, every little helps....by adding all the changes and pieces together a real difference is being made.

Dr Robert Colgate  
Public Education Officer  
Welsh Division  
The Royal College of Psychiatrists  
June 2009

## *Fellowship Nominations*

The closing date for nominations is 30th September each year. The process by which Members can be awarded Fellowship of the College is that they should be nominated, proposed and seconded by two members of the College. Further details, including nomination form, can be found at: <http://www.rcpsych.ac.uk/members/aboutmembership/collegefellowship.aspx>

The Division would like to encourage eligible members to apply for Fellowship.

**The Welsh Division, RCPsych  
and  
The Welsh Psychiatric Society  
Joint Annual Meeting  
Friday 13th November  
St David's Park Hotel,  
Ewloe, Flintshire**

**Launch of the FAIR DEAL campaign. Promoting  
Integration – Reducing Segregation.**

This years programme includes:

- Launch of FAIR DEAL campaign—Professor Dinesh Bhugra, President, RCPsych, Dr Tony Jewell, Chief Medical Officer, Wales
- Mental Health Act Legislation - Ms Claire Fife, Mental Health Legislation Manager, Welsh Assembly Government
- Early Onset Psychosis—Dr Clare Lamb, Chair, Child & Adolescent Faculty, Wales
- Autism and Psychosis—Dr Quinton Deeley, Institute of Psychiatry
- Parkinson's Disease and Psychosis—Dr John Hindle, North West Wales NHS Trust
- Professor Robert Poole, Welsh Psychiatric Society

For further information please contact Siobhan Conway:

[sconway@welshdiv.rcpsych.ac.uk](mailto:sconway@welshdiv.rcpsych.ac.uk)

## *Welsh Division*

### *Current Consultations*

For full list of current consultations, closed consultations and Division Responses please visit:

<http://www.rcpsych.ac.uk/college/divisions/welsh/currentwelshconsultations.aspx>

The Division is currently seeking the views of its membership on the following:

- **Consultation on Review of Secure Mental Health**

**Services** - The Minister for Health and Social Services has agreed to the Review of Secure Mental Health Services consultation. Dr Mark Winston, Chair, General & Community Faculty and Dr John Sandford, Chair, Forensic Faculty are happy to receive and collate comments and proposals from Welsh Division Members in order to formulate a Divisional response. The consultation document and formal consultation questions are now available at the address above. Closing date is **21st August 2009** and comments should be sent through the Welsh Division Office by the **end of July**.

- **Rural Planning—Improving service delivery across Wales**

This consultation seeks your views on the suggested ways in which primary and community services are provided in rural areas. Professor Keith Lloyd, Elected Member to Executive Committee will be collating comments and proposals to formulate a Divisional response. The consultation document can be found at the address above. Closing date is **21st August 2009** and comments should be sent through the Welsh Division Office by the **end of July**.

- **National Dementia Action Plan for Wales**

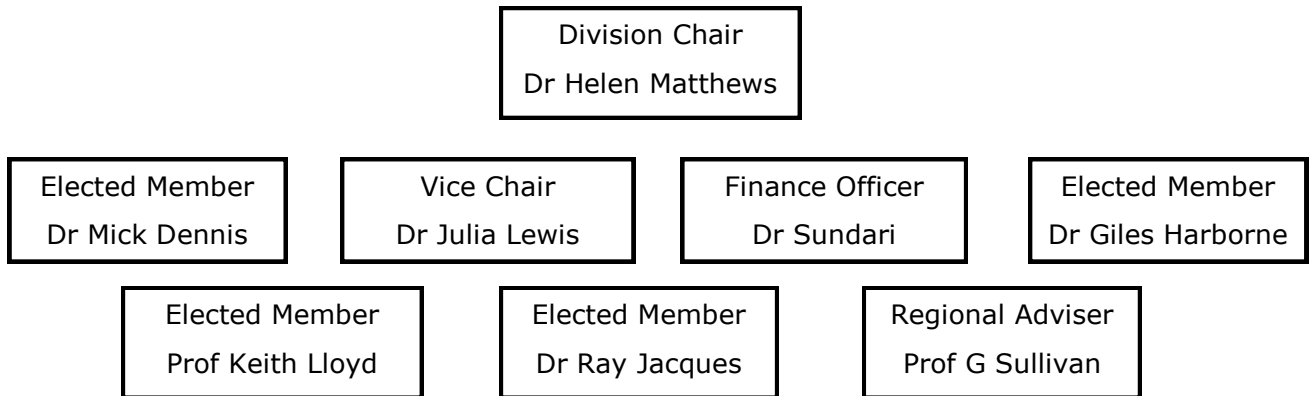
In October 2008, the Minister for Health and Social Services established a Task and Finish Group to develop a dementia plan for Wales. This group have now developed the 'National Dementia Action Plan for Wales', which is now available for consultation at the above address. Closing date is **11th September 2009**. The Division will be responding and any

Comments/proposals should be sent to the Welsh Division Offices by the **end of August**.

## Welsh Division Executive Committee

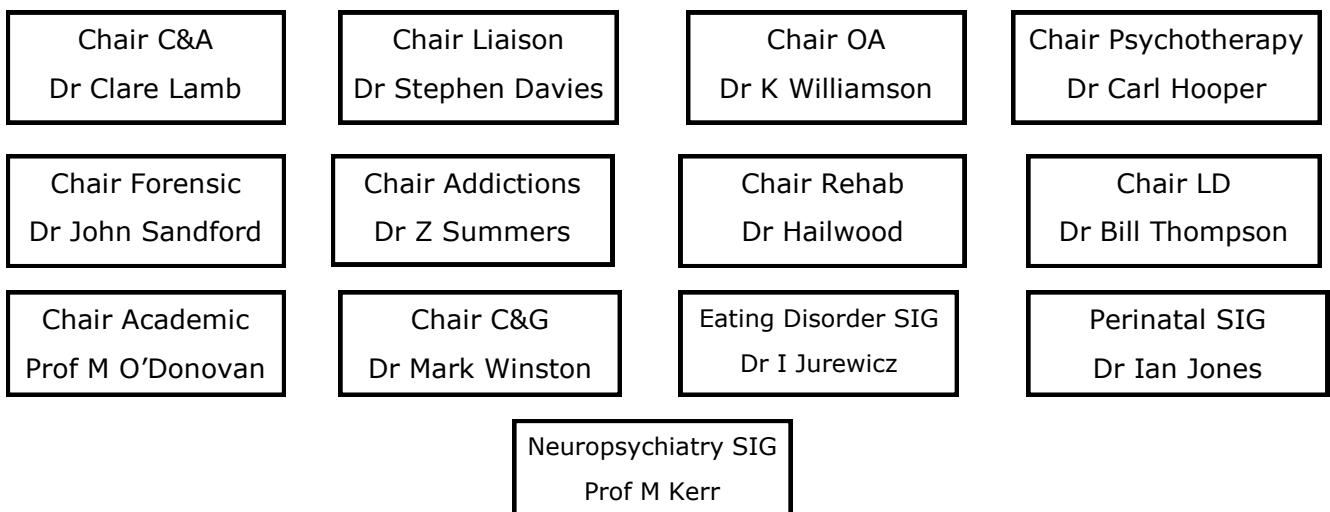
### 'Who's—Who'

#### Elected Members

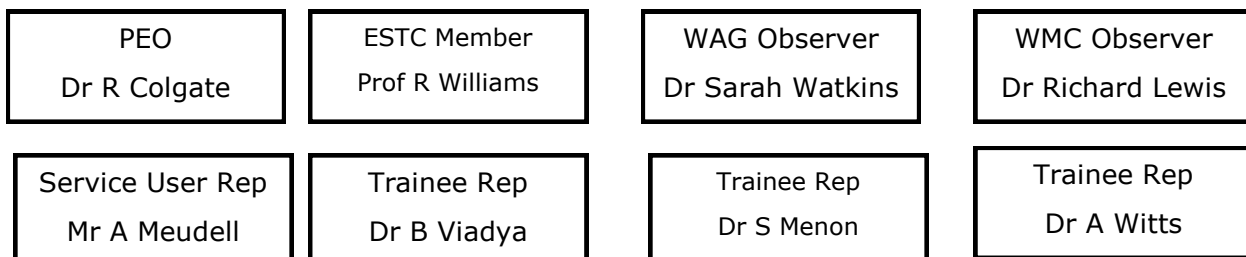


#### Faculty/Special Interest Group

##### Chairs



#### Representatives & Observers



PEO—Public Education Officer

ESTC—Education Standards and Training

WAG—Welsh Assembly Government

WMC—Welsh Medical Committee

## Welsh Division

The Royal College of Psychiatrists  
Baltic House  
Mount Stuart Square  
Cardiff CF10 5FH

Phone: 02920 489006  
Fax: 02920 489385  
E-mail: [sconway@welshdiv.rcpsych.ac.uk](mailto:sconway@welshdiv.rcpsych.ac.uk)

---

[www.rcpsych.ac.uk](http://www.rcpsych.ac.uk)



## Vacancies

### Chair, Learning Disability Faculty, Welsh Division

The post of Chair, Learning Disability Faculty, Welsh Division is currently being advertised. If you are interested in this post, contact Siobhan Conway:

[sconway@welshdiv.rcpsych.ac.uk](mailto:sconway@welshdiv.rcpsych.ac.uk) for further information and nomination form.



### Executive Committee meeting dates 2009

- **Friday 25th September**
- **Thursday 12th November (North Wales)**

### Specialty Training Committee Dates 2009

- **Friday 9th October**
- **Friday 11th December**

---

## Welsh Division Policy Issues

The Welsh Division is committed to the continued involvement in policy development working closely with the Welsh Assembly Government (WAG), National Public Health Service for Wales (NPHS), and the National Leadership & Innovation Agency for Healthcare (NLIAH).

The Division provides responses to WAG consultations on Mental Health and encourages our membership to be an active part of this process. Current Welsh consultations are available to download at: <http://www.rcpsych.ac.uk/college/divisions/welsh/currentwelshconsultations.aspx>

*If you would like to contribute to the next issue of the Welsh Division Newsletter, please submit your article/ Faculty news/ information to [sconway@welsh.div.rcpsych.ac.uk](mailto:sconway@welsh.div.rcpsych.ac.uk)*