



WORKFORCE FIGURES FOR PSYCHIATRISTS

CENSUS RESULTS FOR 2006

The 2006 census covers England, Wales and Northern Ireland. Scotland carries out its own census which will be reported separately on the College website.

The return rate from Trusts was the highest ever – 92% for England 91% for Wales and 100% for Northern Ireland. In the presentation the figures have been extrapolated to 100% to enable easier comparison with earlier years.

Headlines

- The numbers of consultant posts is still growing slightly, but the rapid increases seen year on year have come to an end.
- The use of locums to cover vacancies is still quite high, but for the first time we asked Trusts to make a distinction between “Trust” and “agency” locums. A large majority are Trust locums which may reflect the fact that with a shortage of suitable applicants for posts for many years, Trusts have in place long term locums, who are not currently on the Specialty Register. These may be paid standard NHS salaries and by virtue of their length of service may not be readily displaced from their posts so substantive posts can be advertised.

Article 14 applicants are coming in steadily from this group of doctors and some have now been recruited to substantive positions.

- This may explain the anecdotal observation of many psychiatrists that the use of locums has dropped dramatically over the past year or two, and competition for advertised posts is getting much stronger.
- To check on this the 2007 census is going to have more specific questions on the nature of locums, their length of tenure and whether there are any plans to advertise the posts in the near future. That should enable a more accurate picture to be painted of the “real” vacancy figures, which will be of particular interest to trainees near to obtaining their CCT.
- We have also been asked by the Workforce Review Team for more specific information on retirement plans over the next year, so questions on that will also be included.
- In the year that has seen the dramatic (or traumatic) changes of MMC to training, we will be trying to map out the numbers of FY1, FY2 and the ST1 – ST4 posts across Trusts in the 2007 census to see whether we achieved the significant increases in Foundation posts we hoped for as part of our efforts to give wider exposure to Psychiatry to doctors before they make their choice of specialty.

As usual, I am indebted to Kate Holliday from the Department of Postgraduate Educational Services at the College for her tireless work chasing up Trusts and collating the returns. Thanks also to medical directors and HR managers for the time they have given to this task. The data continue to be a very valuable tool for the College in negotiations on workforce issues with government departments and Trusts and employers (particularly in the years of MMC initiation) and I look forward to continuing cooperation of all parties in the 2007 census which will go out for completion on 30 November 2007.

Sally Pidd
Associate Dean – Workforce

Results for the 2006 Census made up to 100%
Consultant Figures for England, Northern Ireland and Wales

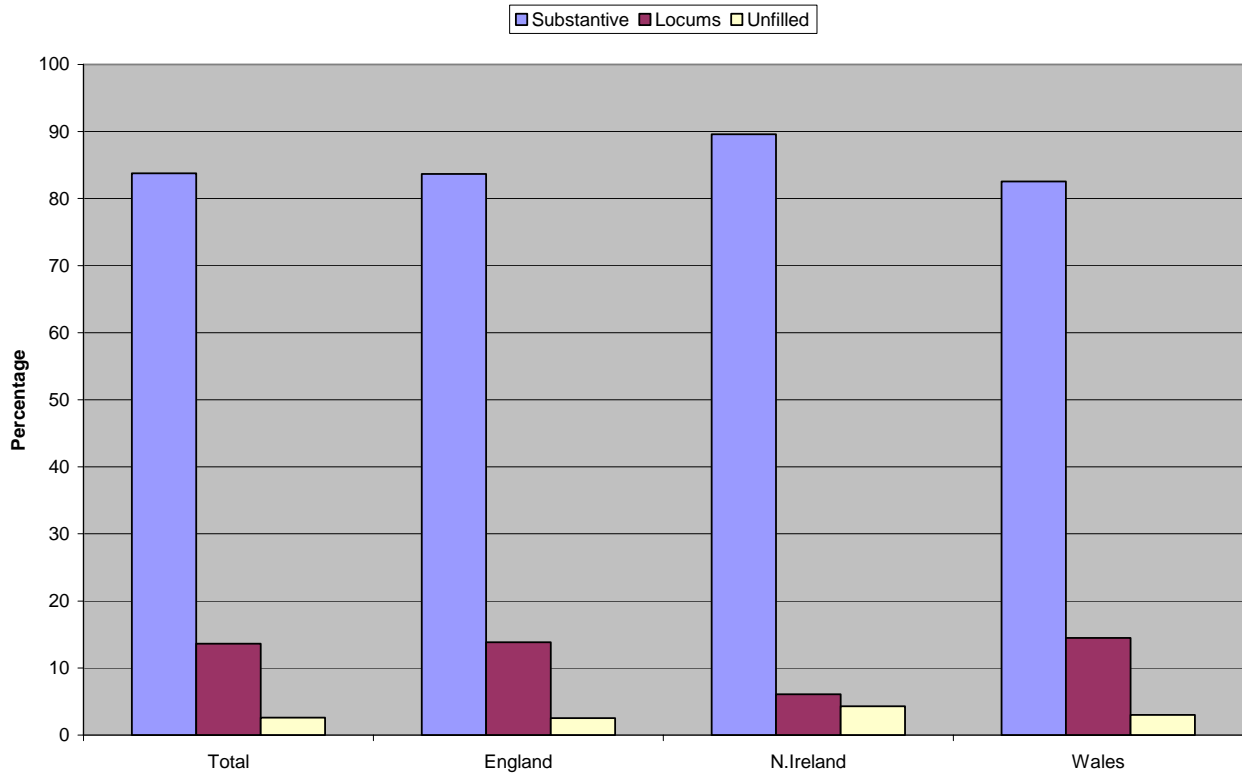
	Total number of Consultant posts	Number of Substantive Consultants - Male	Number of Substantive Consultants - Female	Full time - Male	Full time - Female
		3866		2827	
Total	4615	2513	1353	2011	815
England	4247	2321	1232	1869	733
N.Ireland	140	69	56	50	38
Wales	228	123	65	92	44

	Consultant posts filled by locums - Male	Consultant posts filled by locums - Female	How many on Specialist Register - Male	How many on Specialist Register - Female	How many are on trust contracts - Male	How many are on trust contracts - Female
	629		290		491	
Total	460	170	206	84	356	135
England	431	156	196	77	340	127
N.Ireland	4	5	1	2	1	4
Wales	24	9	9	5	15	4

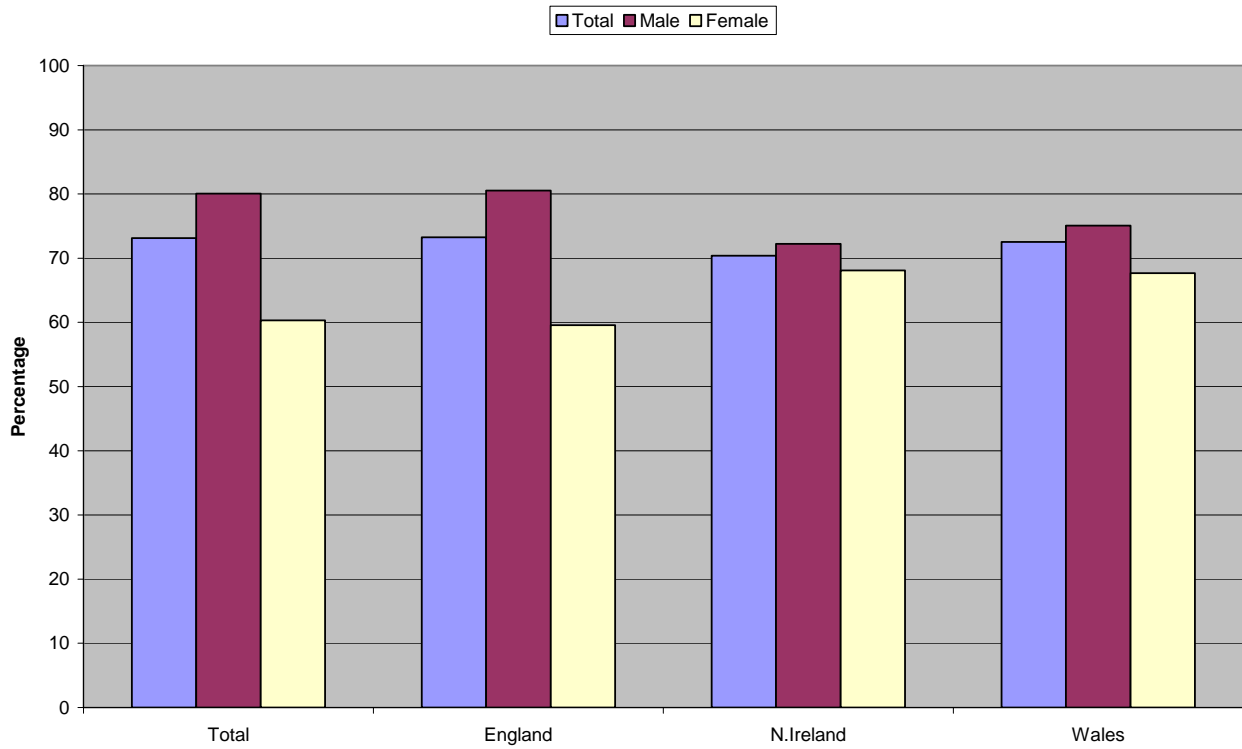
	Substantive Consultants	Locum Consultants	Unfilled posts
Total	3866	629	120
England	3553	588	107
N.Ireland	125	9	6
Wales	188	33	7

	Number of Consultants retiring in 2007 - Male	Number of Consultants retiring in 2007 - Female	Number of Consultants leaving for other reasons - Male	Number of Consultants leaving for other reasons - Female
	137		57	
Total	106	31	41	16
England	93	27	39	14
N.Ireland	2	3	1	0
Wales	11	1	1	2

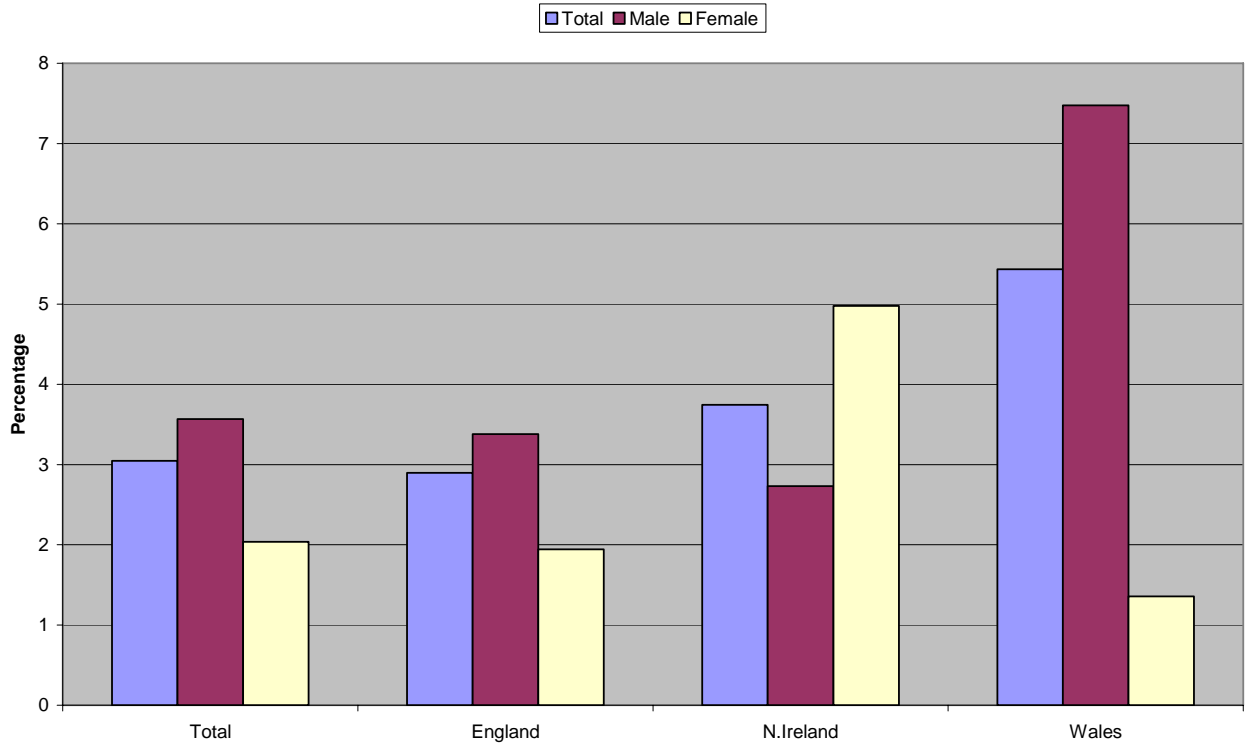
How Consultant posts are filled for England, N.Ireland and Wales - 2006



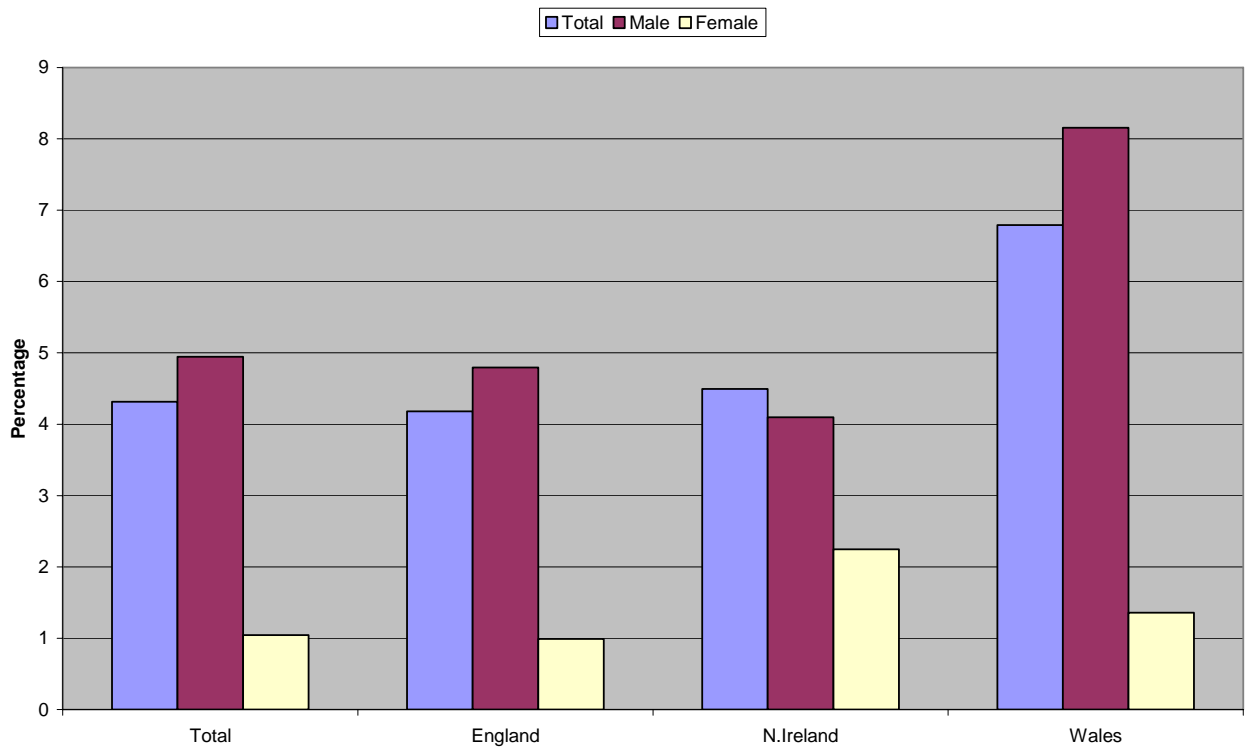
Percentage of substantive Consultant posts that are full-time in England, N.Ireland and Wales - 2006



Percentage of Consultants retiring in the next 12 months in England, N.Ireland and Wales - 2006



Percentage of people retiring or leaving in the next 12 months for England, N.Ireland and Wales - 2006



Results for the 2006 Census made up to 100%
Consultant Specialty Figures for England, Northern Ireland and Wales

	Total number of Consultant posts	Number of Substantive Consultants - Male	Number of Substantive Consultants - Female	Full time - Male	Full time - Female
		3867		2827	
Total	4615	2514	1353	2011	817
GA	1877	1077	453	945	298
OA	699	376	226	345	148
C&A	613	238	267	188	155
LD	279	136	75	116	46
FOR	332	187	99	156	67
PTH	144	70	61	48	24
ADD	147	74	38	52	24
RHB	107	53	39	40	25
LIA	51	33	15	23	7
AC	199	153	41	50	9
MAN	110	84	24	25	4
OTH	56	33	15	23	11

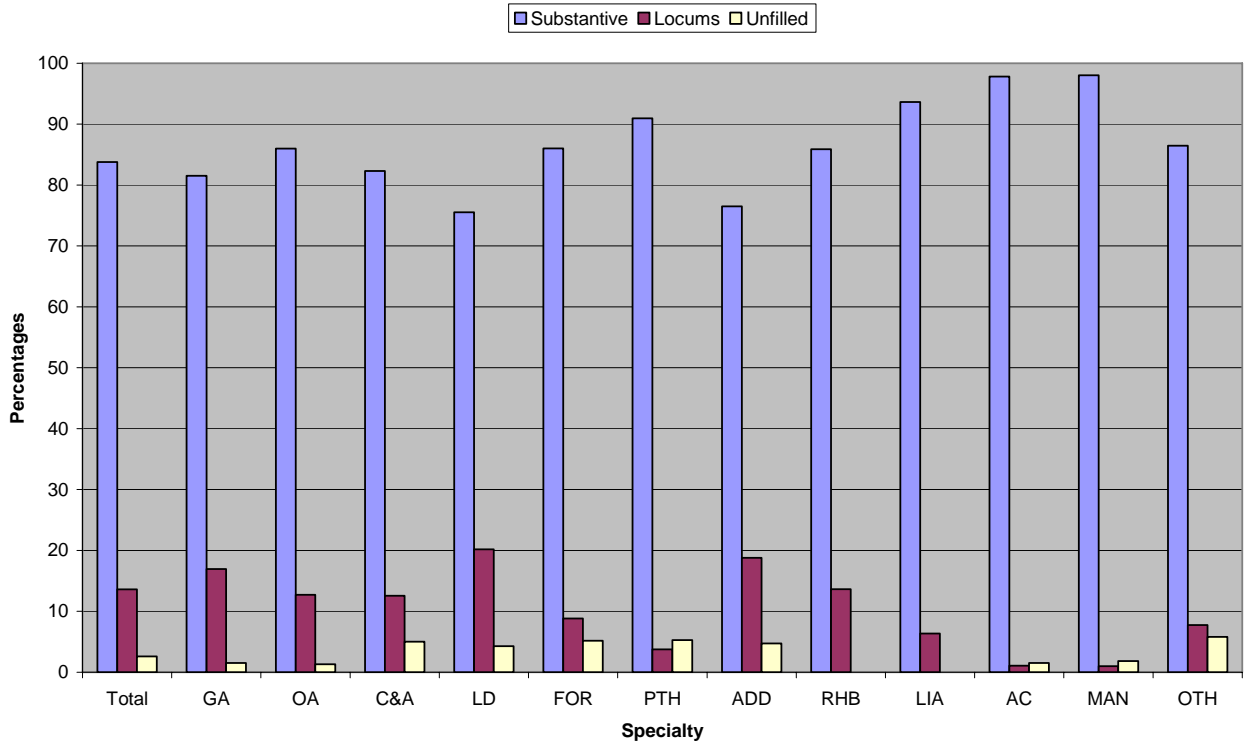
	Consultant posts filled by locums - Male	Consultant posts filled by locums - Female	How many on Specialist Register - Male	How many on Specialist Register - Female	How many are on trust contracts - Male	How many are on trust contracts - Female
	628		290		490	
Total	459	170	205	84	355	135
GA	241	77	104	31	203	73
OA	69	20	24	7	49	15
C&A	44	33	25	21	29	19
LD	41	15	16	10	25	13
FOR	26	3	16	1	16	2
PTH	5	0	4	0	5	0
ADD	20	8	11	5	17	3
RHB	8	7	1	4	5	7
LIA	1	2	1	1	1	1
AC	1	1	1	1	1	0
MAN	0	1	0	1	0	0
OTH	2	2	1	1	2	2

Results for the 2006 Census made up to 100%
Consultant Specialty Figures for England, Northern Ireland and Wales

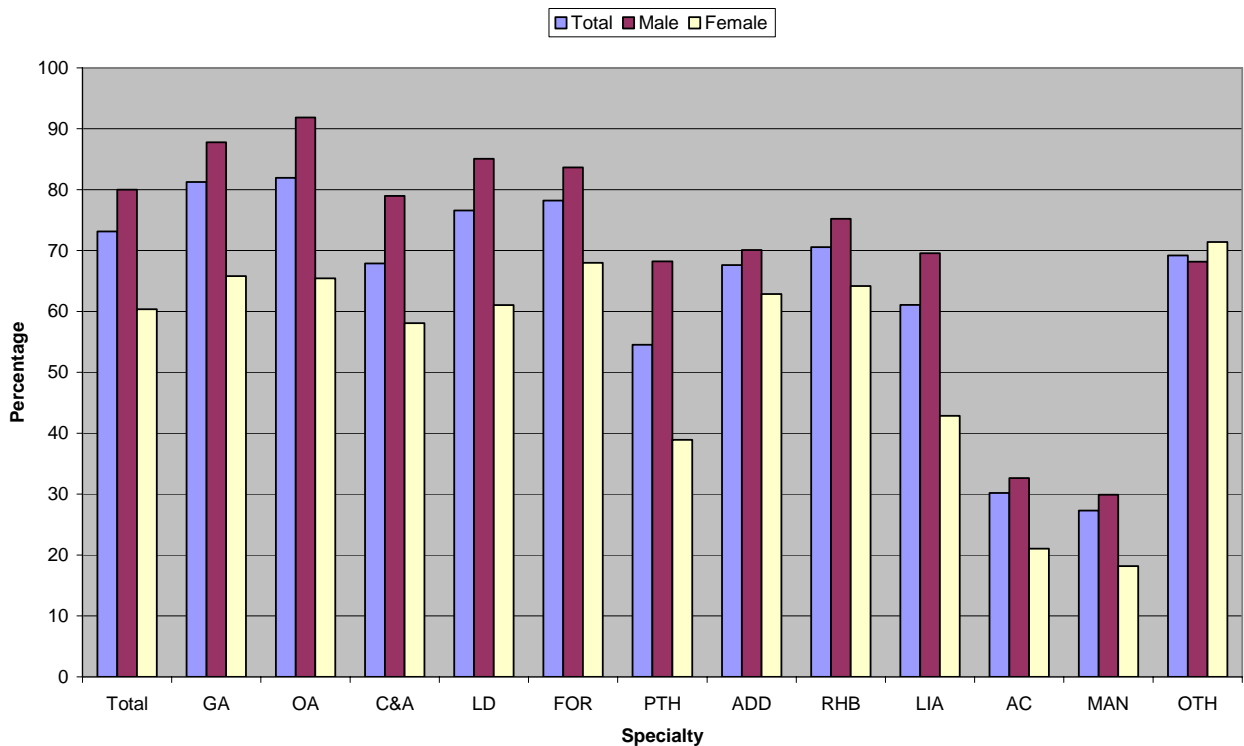
	Substantive Consultants	Locum Consultants	Unfilled posts
Total	3867	628	120
GA	1530	318	29
OA	601	88	10
C&A	505	78	31
LD	211	56	12
FOR	286	29	17
PTH	131	5	8
ADD	112	28	7
RHB	92	15	1
LIA	48	3	0
AC	194	2	2
MAN	107	1	1
OTH	49	4	3

	Number of Consultants retiring in 2007 - Male	Number of Consultants retiring in 2007 - Female	Number of Consultants leaving for other reasons - Male	Number of Consultants leaving for other reasons - Female
	137		57	
Total	106	31	41	16
GA	45	14	15	6
OA	15	4	6	2
C&A	13	4	4	4
LD	9	4	6	0
FOR	3	1	4	2
PTH	1	1	0	1
ADD	4	1	1	0
RHB	3	0	2	1
LIA	1	0	0	0
AC	9	2	0	0
MAN	3	0	1	0
OTH	0	0	2	0

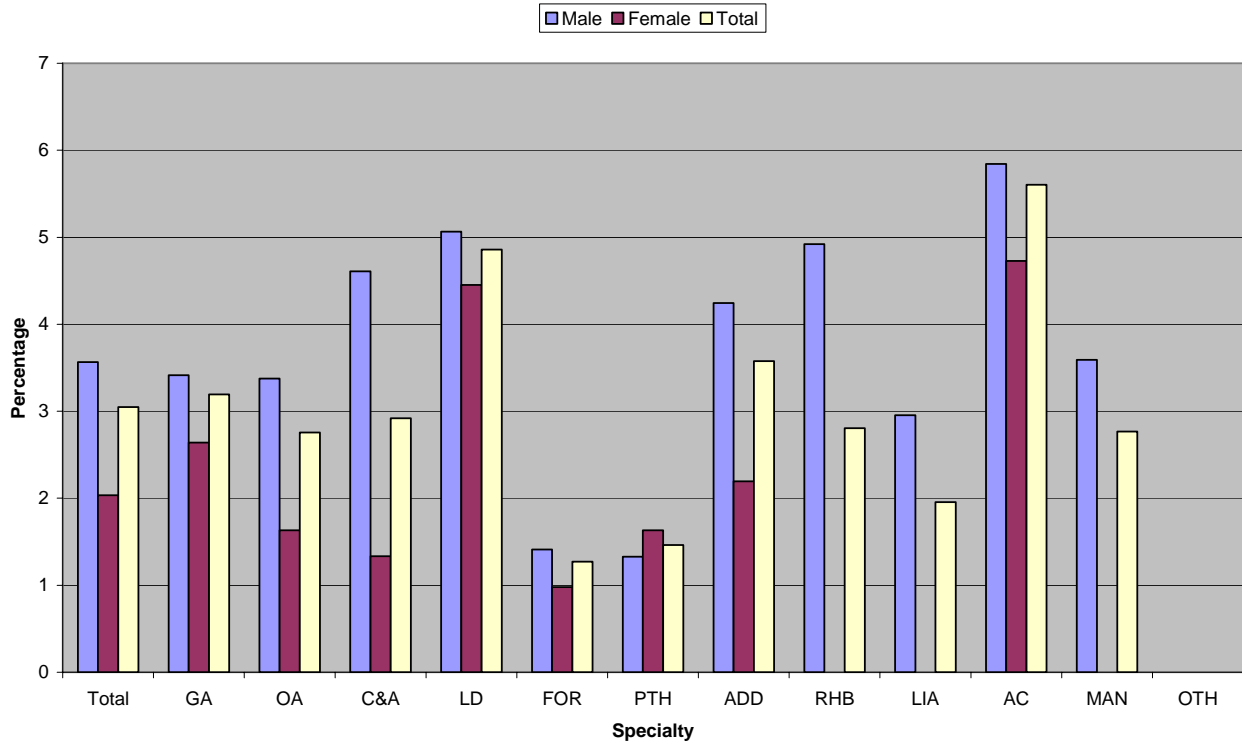
How Consultant posts are filled within each specialty for England, Wales and Northern Ireland - 2006



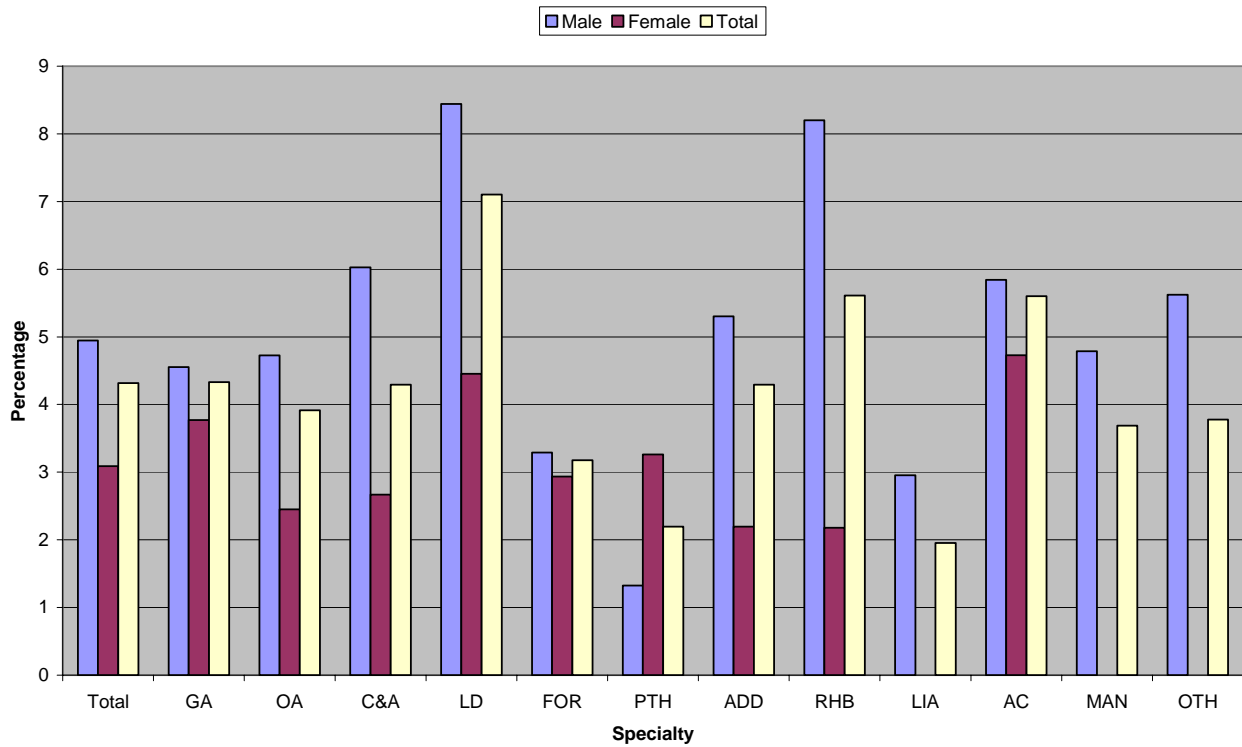
The percentage of substantive Consultant posts that are full-time in England, Northern Ireland and Wales - 2006



Percentage of Consultants retiring in the next 12 months by specialty for England, Northern Ireland and Wales - 2006



Percentage of people retiring or leaving in the next 12 months in each specialty in England, Northern Ireland and Wales - 2006



Results for the 2006 Census made up to 100%
Consultant Regional Figures for England

	Total number of Consultant posts	Number of Substantive Consultants - Male	Number of Substantive Consultants - Female	Full time - Male	Full time - Female
Total		3553		2599	
	4247	2321	1232	1866	733
Eastern	422	226	123	185	80
KSS	264	141	65	113	43
LNR	129	77	34	74	24
London	1026	562	362	356	180
Mersey	127	62	31	58	17
Northern	237	137	53	132	34
N West	392	206	106	153	64
Oxford	170	80	56	65	26
S.West	134	79	25	57	15
S.Yorks	55	32	12	30	8
Trent	236	123	73	111	45
Wessex	375	205	116	179	80
W.Mids	382	210	97	197	72
Yorks	299	181	80	156	45

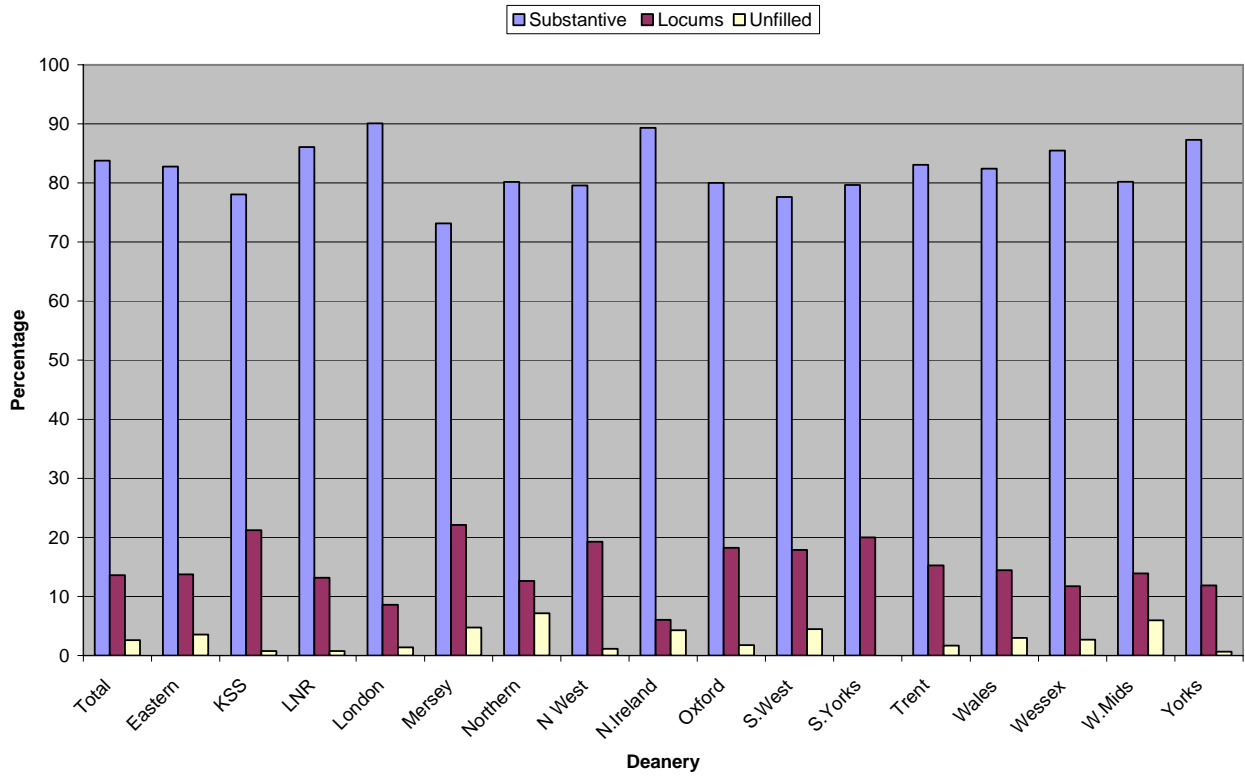
	Consultant posts filled by locums - Male	Consultant posts filled by locums - Female	How many on Specialist Register - Male	How many on Specialist Register - Female	How many are on trust contracts - Male	How many are on trust contracts - Female
Total	587		273		467	
	431	156	196	77	340	127
Eastern	44	14	21	5	42	12
KSS	38	18	1	7	33	16
LNR	15	2	4	1	14	2
London	59	29	36	17	49	22
Mersey	27	1	16	1	26	1
Northern	25	5	14	3	15	3
N West	55	21	28	9	42	17
Oxford	20	11	12	3	18	7
S.West	12	12	10	9	9	10
S.Yorks	6	5	2	4	5	4
Trent	34	2	11	0	26	2
Wessex	35	9	15	4	19	7
W.Mids	36	17	11	10	25	16
Yorks	26	10	16	4	17	8

Results for the 2006 Census made up to 100%
Consultant Regional Figures for England

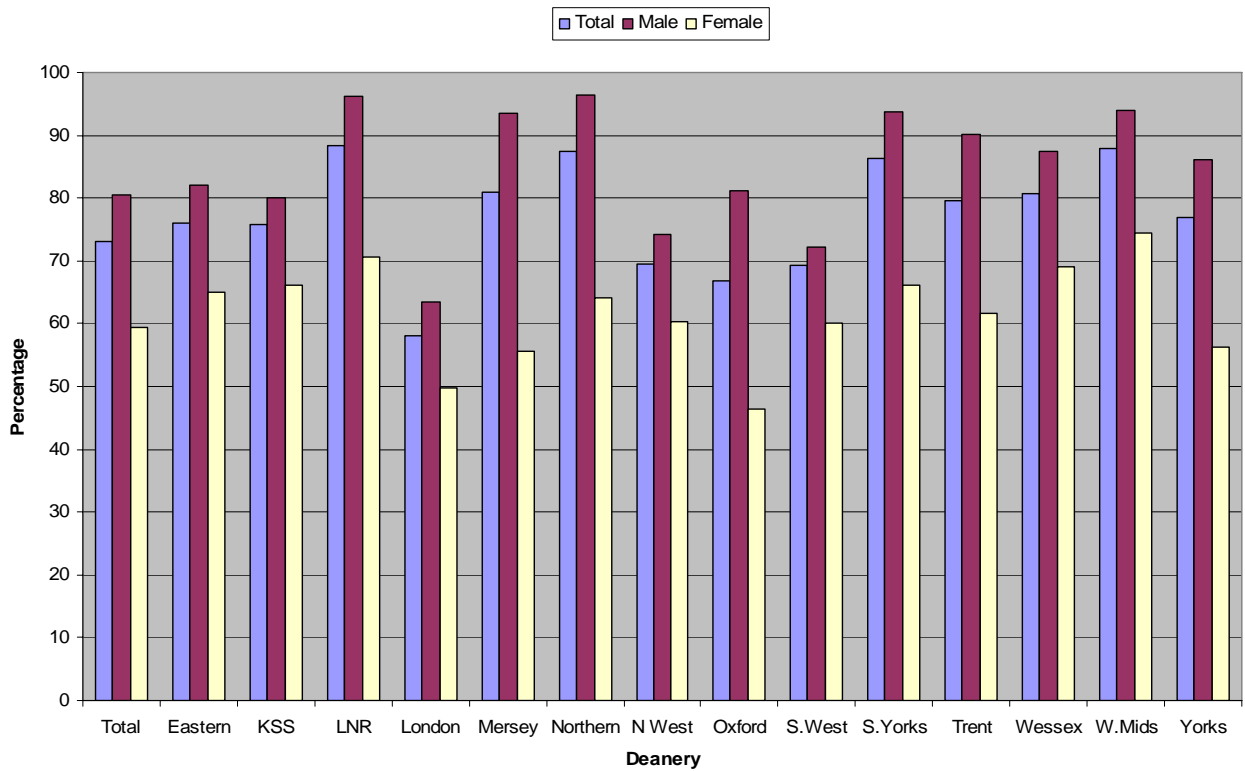
	Substantive Consultants	Locum Consultants	Unfilled posts
Total	3553	587	107
Eastern	349	58	15
KSS	206	56	2
LNR	111	17	1
London	924	88	14
Mersey	93	28	6
Northern	190	30	17
N West	312	76	5
Oxford	136	31	3
S.West	104	24	6
S.Yorks	44	11	0
Trent	196	36	4
Wessex	321	44	10
W.Mids	306	53	23
Yorks	261	36	2

	Number of Consultants retiring in 2007 - Male	Number of Consultants retiring in 2007 - Female	Number of Consultants leaving for other reasons - Male	Number of Consultants leaving for other reasons - Female
Total	120		53	
	93	27	39	14
Eastern	11	5	9	4
KSS	5	0	0	0
LNR	3	2	5	1
London	33	11	5	0
Mersey	2	0	0	0
Northern	3	2	2	2
N West	6	1	0	3
Oxford	1	0	0	0
S.West	3	0	1	0
S.Yorks	1	0	1	0
Trent	9	0	2	0
Wessex	3	4	3	2
W.Mids	8	1	3	1
Yorks	5	1	8	1

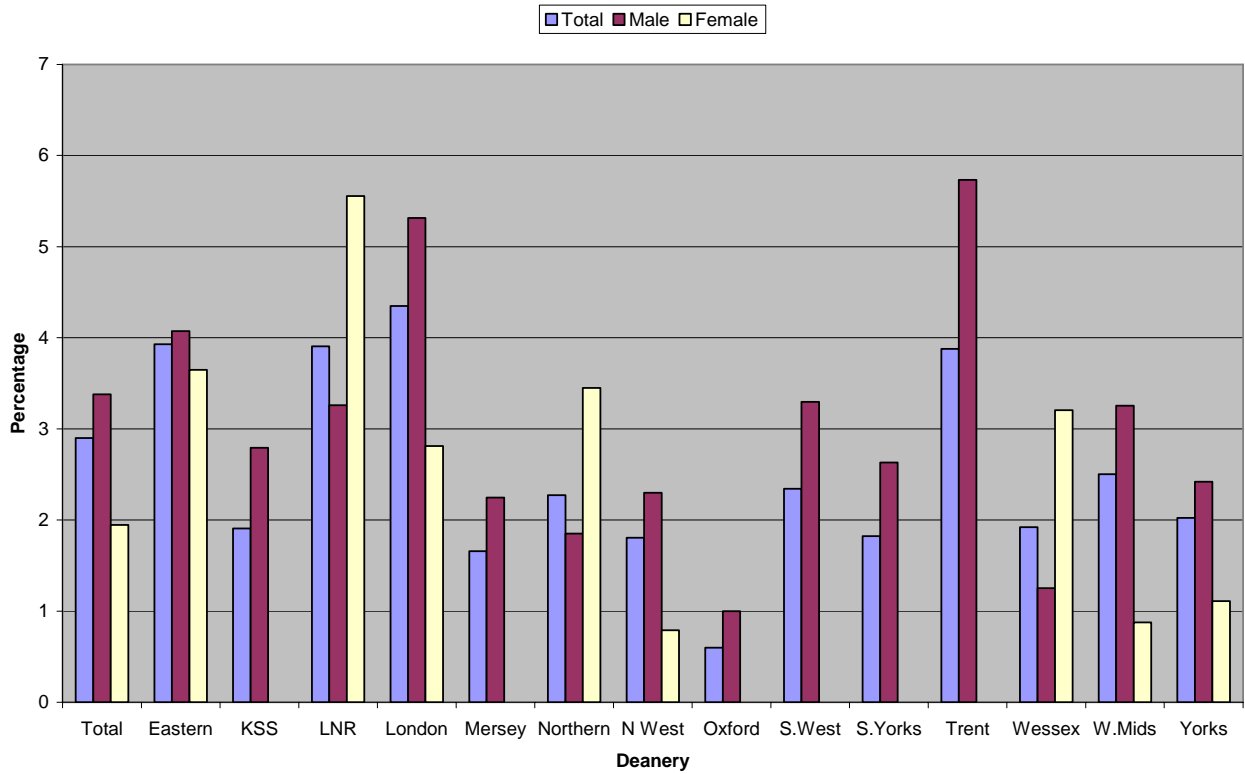
How Consultant posts are filled within each Deanery - 2006



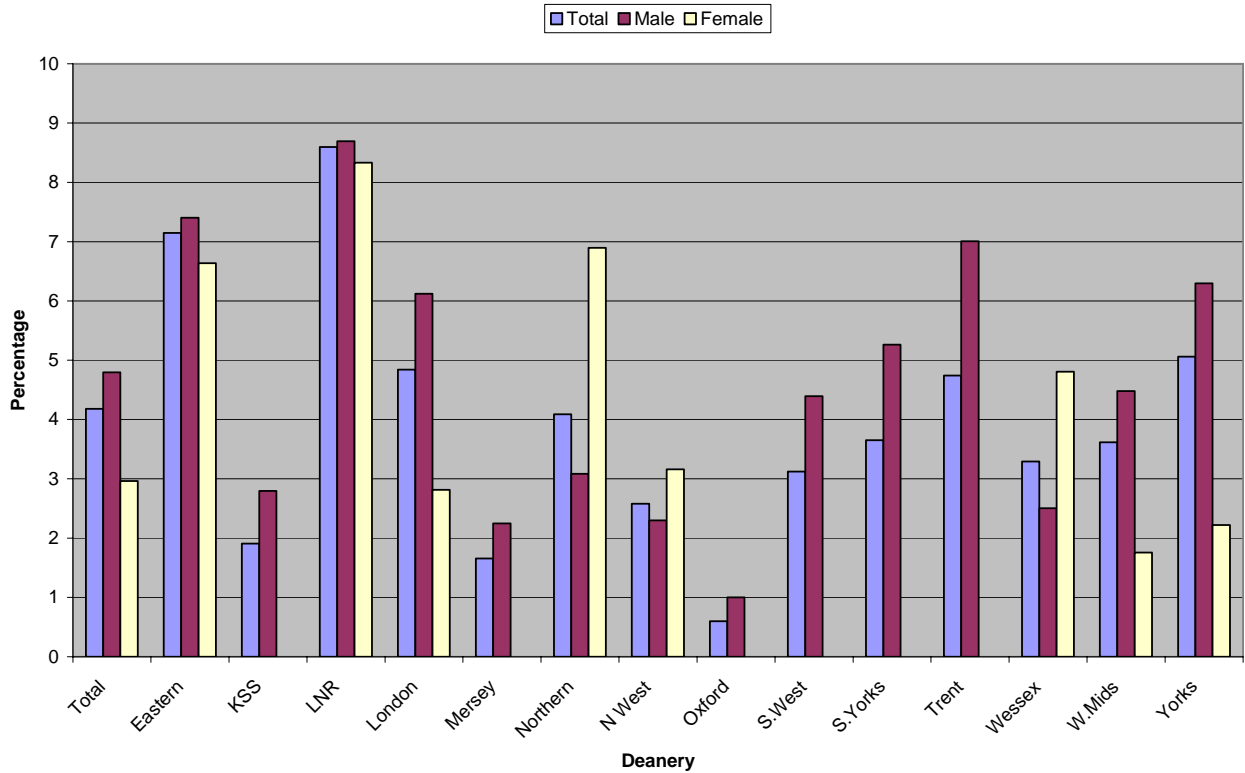
The percentage of substantive Consultant posts that are full-time in each deanery - 2006



Percentage of Consultants retiring in the next 12 months by deanery - 2006



Percentage of people retiring or leaving in the next 12 months by deanery - 2006



Results for the 2006 Census
Consultant Specialty Figures in the Independent Sector

This is the first time we have attempted to obtain workforce information from the independent sector and it is likely that the true figures are substantially higher than this. For reasons of commercial sensitivity we have not been able to obtain comprehensive figures.

	Total number of Consultant posts	Number of Substantive Consultants - Male	Number of Substantive Consultants - Female	Full time - Male	Full time - Female
Total	85	78		56	
		65	13	49	7
GA	14	10	2	5	0
OA	4	4	0	1	
C&A	7	2	2	0	0
LD	15	11	4	11	4
FOR	38	31	5	27	3
PTH	0	0	0	0	0
ADD	0	0	0	0	0
RHB	1	1	0	1	0
LIA	0	0	0	0	0
AC	0	0	0	0	0
MAN	1	1	0	0	0
OTH	5	5	0	4	0

	Consultant posts filled by locums - Male	Consultant posts filled by locums - Female	How many on Specialist Register - Male	How many on Specialist Register - Female
Total	4		4	
	3	1	3	1
GA	2	0	2	0
OA	0	0	0	0
C&A	0	0	0	0
LD	0	0	0	0
FOR	1	1	1	1
PTH	0	0	0	0
ADD	0	0	0	0
RHB	0	0	0	0
LIA	0	0	0	0
AC	0	0	0	0
MAN	0	0	0	0
OTH	0	0	0	0

Results for the 2006 Census
Consultant Specialty Figures in the Independent Sector

	Substantive Consultants	Locum Consultants	Unfilled posts
Total	78	4	3
GA	12	2	0
OA	4	0	0
C&A	4	0	3
LD	15	0	0
FOR	36	2	0
PTH	0	0	0
ADD	0	0	0
RHB	1	0	0
LIA	0	0	0
AC	0	0	0
MAN	1	0	0
OTH	5	0	0

	Number of Consultants retiring in 2007 - Male	Number of Consultants retiring in 2007 - Female	Number of Consultants leaving for other reasons - Male	Number of Consultants leaving for other reasons - Female
Total	0	0	2	0
GA	0	0	2	0
OA	0	0	0	0
C&A	0	0	0	0
LD	0	0	0	0
FOR	0	0	0	0
PTH	0	0	0	0
ADD	0	0	0	0
RHB	0	0	0	0
LIA	0	0	0	0
AC	0	0	0	0
MAN	0	0	0	0
OTH	0	0	0	0

Results for the 2006 Census made up to 100%
Foundation, SHO and NCCG Figures for England, Northern Ireland and
Wales

	FY1 posts	FY2 posts
Total	61	205
England	57	173
N.Ireland	0	21
Wales	4	11

	SHO posts in Psychiatry - male	SHO posts in psychiatry female	SHO posts GPs - male	SHO posts GPs - female
Total	2216		333	
	1325	891	165	168
England	1233	810	149	143
N.Ireland	37	36	6	13
Wales	55	45	10	12

	Associate Specialists	Number filled by locums	Number filled by substantive appoint	How many have a CCST
Total	501	45	422	14
England	475	45	402	12
N.Ireland	7	0	5	2
Wales	19	0	15	0

	Staff Grade posts	Number filled by locums	Number filled by substantive appoint	How many have a CCST
Total	1238	167	1031	14
England	1124	162	942	13
N.Ireland	21	1	15	1
Wales	93	4	74	0

	Trust Grade post	Number filled by locums	Number filled by substantive appoint	How many have a CCST
Total	191	47	90	2
England	183	47	85	2
N.Ireland	4	0	3	0
Wales	4	0	2	0

	Clinical Assistant	Number filled by locums	Number filled by substantive appoint	How many have a CCST
Total	267	14	218	3
England	256	14	209	3
N.Ireland	0	0	0	0
Wales	11	0	9	0

Results for the 2006 Census made up to 100%
Foundation and SHO Regional Figures for England

	FY1 posts	FY2 posts
Total	57	173
Eastern	1	14
KSS	10	20
LNR	1	7
London	2	25
Mersey	0	5
Northern	0	8
N West	4	16
Oxford	0	4
S.West	1	8
S.Yorks	0	3
Trent	4	7
Wessex	0	23
W.Mids	24	18
Yorks	10	15

	SHO posts in Psychiatry - male	SHO posts in psychiatry female	SHO posts GPs - male	SHO posts GPs - female
	2043		292	
Total	1233	810	149	143
Eastern	130	105	13	13
KSS	62	31	12	17
LNR	30	34	6	2
London	344	278	13	13
Mersey	79	34	9	8
Northern	66	17	11	4
N West	102	57	9	12
Oxford	35	20	3	10
S.West	32	16	6	3
S.Yorks	12	9	4	6
Trent	51	32	8	7
Wessex	80	40	34	15
W.Mids	97	68	15	20
Yorks	113	69	6	13

Results for the 2006 Census made up to 100%
Associate Specialists and Staff Grades Regional Figures for England

	Associate Specialists	Number filled by locums	Number filled by substantive appoint	How many have a CCST
Total	475	45	402	12
Eastern	65	1	62	0
KSS	41	6	33	1
LNR	10	0	8	1
London	139	19	106	3
Mersey	8	6	2	0
Northern	13	0	13	0
N West	14	2	12	0
Oxford	3	0	3	0
S.West	9	0	6	0
S.Yorks	6	3	3	0
Trent	13	0	13	1
Wessex	28	3	24	3
W.Mids	104	5	95	2
Yorks	22	0	22	1

	Staff Grade posts	Number filled by locums	Number filled by substantive appoint	How many have a CCST
Total	1124	162	942	13
Eastern	127	9	113	10
KSS	91	27	63	0
LNR	35	10	27	1
London	206	21	197	1
Mersey	32	12	20	0
Northern	81	6	69	0
N West	76	17	57	0
Oxford	51	12	38	0
S.West	55	5	39	0
S.Yorks	14	0	14	0
Trent	71	3	66	0
Wessex	120	15	103	0
W.Mids	93	17	76	1
Yorks	72	8	60	0

Results for the 2006 Census made up to 100%
Trust Grade and Clinical Assistant Regional Figures for England

	Trust Grade post	Number filled by locums	Number filled by substantive appoint	How many have a CCST
Total	183	47	85	2
Eastern	3	0	2	0
KSS	28	10	6	0
LNR	6	0	6	0
London	45	4	27	0
Mersey	4	4	0	0
Northern	12	2	9	0
N West	16	5	11	0
Oxford	2	1	1	0
S.West	6	2	4	0
S.Yorks	4	0	4	0
Trent	0	0	0	0
Wessex	4	0	3	0
W.Mids	25	6	9	0
Yorks	28	13	3	2

	Clinical Assistant	Number filled by locums	Number filled by substantive appoint	How many have a CCST
Total	256	14	209	3
Eastern	12	1	7	0
KSS	21	0	14	0
LNR	16	0	8	0
London	28	1	21	1
Mersey	7	0	7	0
Northern	18	0	15	0
N West	47	0	47	0
Oxford	6	0	2	0
S.West	7	0	7	0
S.Yorks	4	0	4	0
Trent	8	0	8	0
Wessex	24	12	21	0
W.Mids	25	0	25	0
Yorks	33	0	23	2