

Improvement of the adherence of ECG guidelines on admission within an inpatient psychiatric hospital

A Quality Improvement Project

Project Lead- Dr Sanjog Banstola
Project Supervisor- Dr Esther Chilman

The Harbour Hospital
Preston New Road
Blackpool
United Kingdom
FY4 4YE



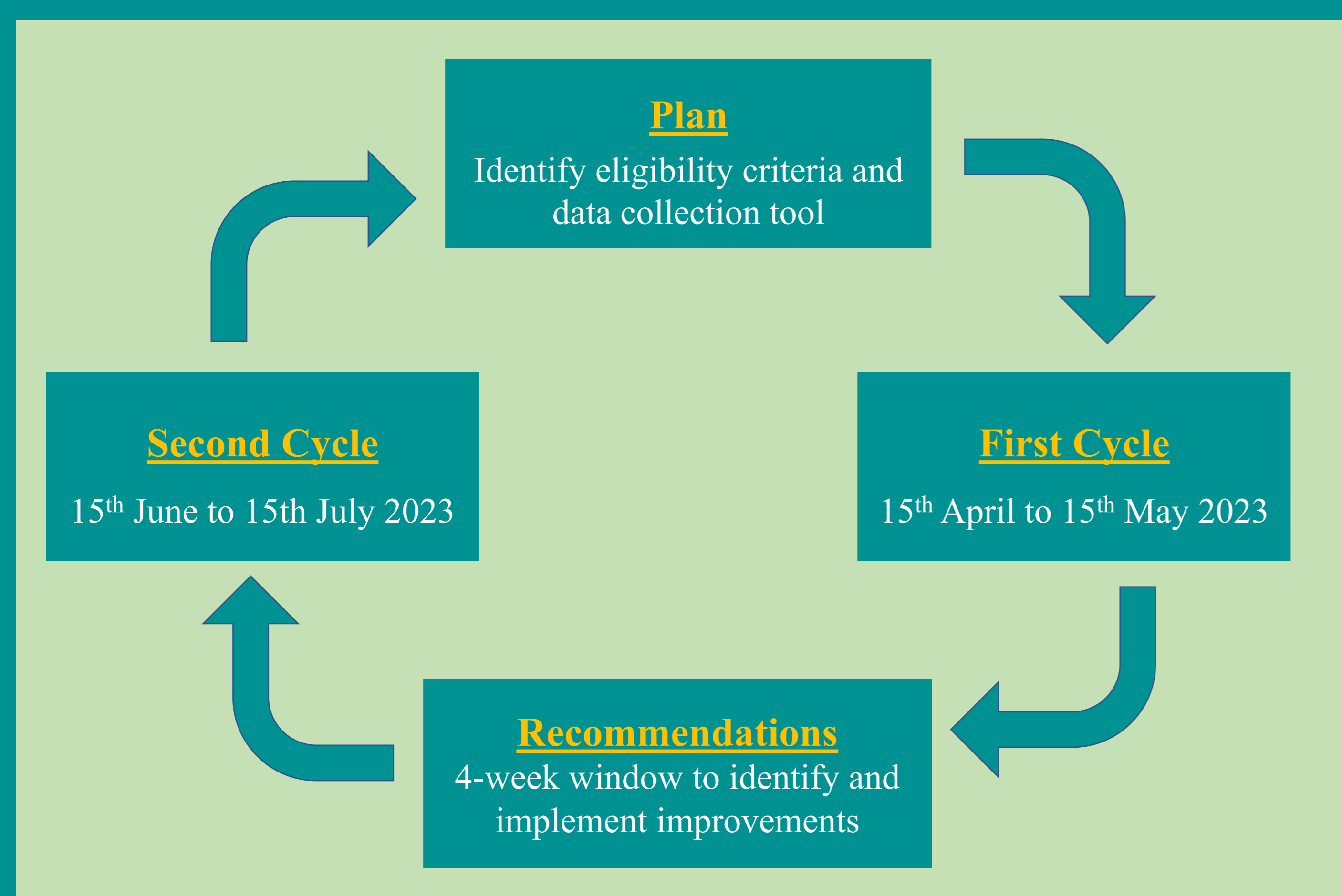
Background

The 'Standards for Inpatient Older Adults Mental Health Services: Fourth Edition' published by the Royal College of Psychiatry in 2017 (1), highlights that **a baseline ECG should be carried out within 24 hours of admission**. The adherence to these guidelines becomes more critical when patients have multiple comorbidities and are on regular psychotropic medications prior to admission.

Aim

The aim of the study was to **assess** and **improve** the **adherence of ECG guidelines** on admission within the Harbour Hospital.

Methods



Inclusion criteria:

- Patients admitted between either 15th April to 15th May or 15th June to 15th July 2023.
- Patients over the age of 18.

Exclusion criteria:

- Patients admitted within the last 24 hours prior to data collection.
- Patients with a documented valid reason for not having an ECG on admission.

Conclusion

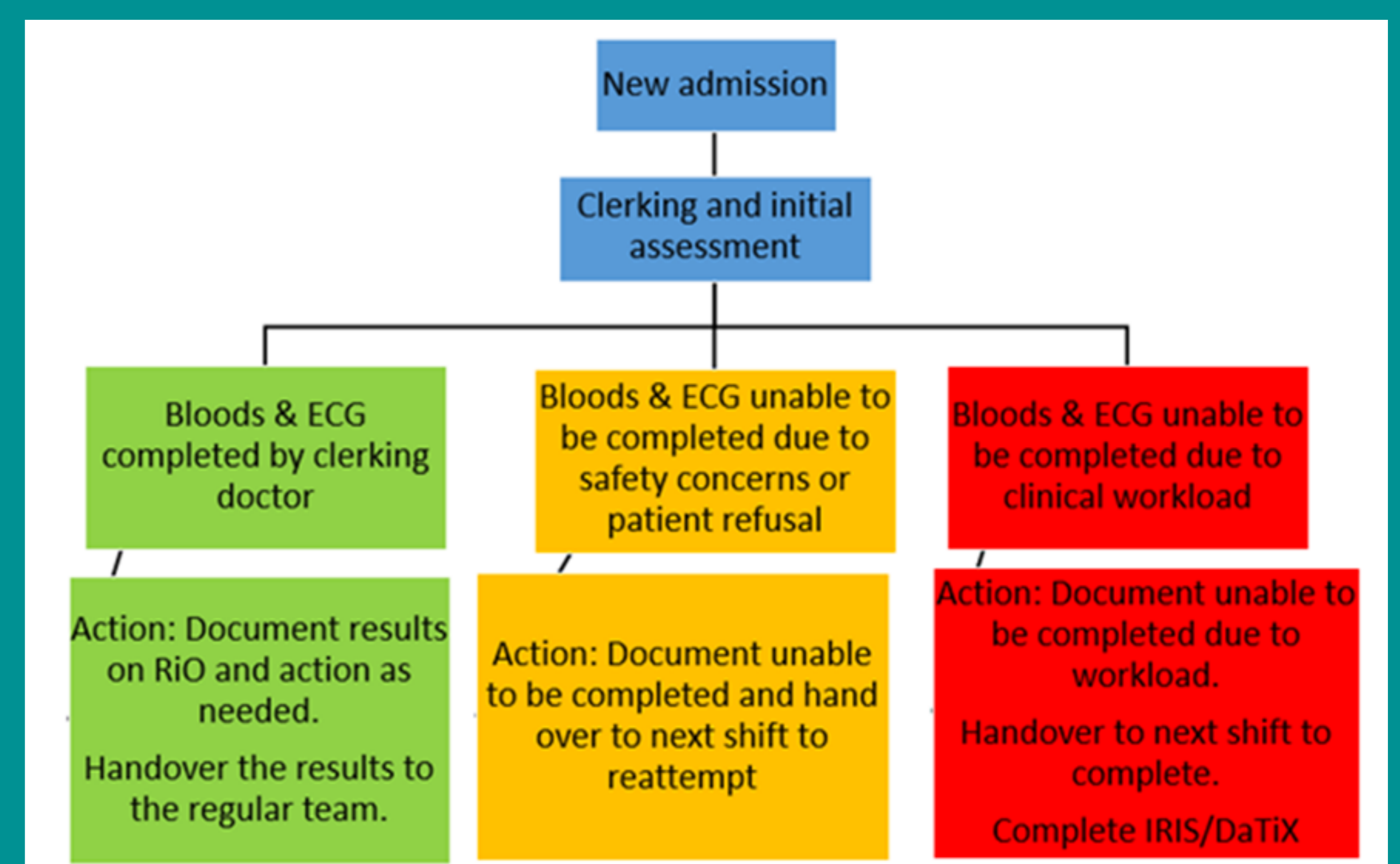
- Overall, within one month of implementation of the recommendations from the first cycle, the project showed an improvement of adherence to ECG guidelines by approximately 35% within the Harbour Hospital.
- The improvement helped identify 3 abnormal ECG findings on admission, of which two patients had prolonged QT interval and one had atrial fibrillation.
- However, multiple cycles across a longer period alongside ECG and venepuncture training of wider allied healthcare professional is recommended to sustain the adherence of guidelines within the Harbour Hospital.

References

1. Bolger, H. and Parker, E. (2017). *Standards for Inpatient Older Adults Mental Health Services: Fourth Edition*. [online] Available at: <https://cars.rcpsych.ac.uk/Downloadresource.aspx?id=156> [Accessed 27 Feb. 2024].

Recommendation

The following flowchart was sent via email to doctors working within the trust, as well as being displayed within the doctor's office of the Harbour Hospital:



Results

A total of 42 and 41 patients were recruited to each cycle of the study respectively, of which approximately 42% were admitted over the weekend in both cycles. The following graph highlights the findings of the two cycles:

