

PREVALENCE AND PREDICTORS OF ALCOHOL-RELATED MULTIMORBIDITY: A REVIEW

N MACKENZIE^{1,2}, A BALDACCHINO¹, P DONNELLY¹, C MACNAMARA¹, S DUGGAL¹

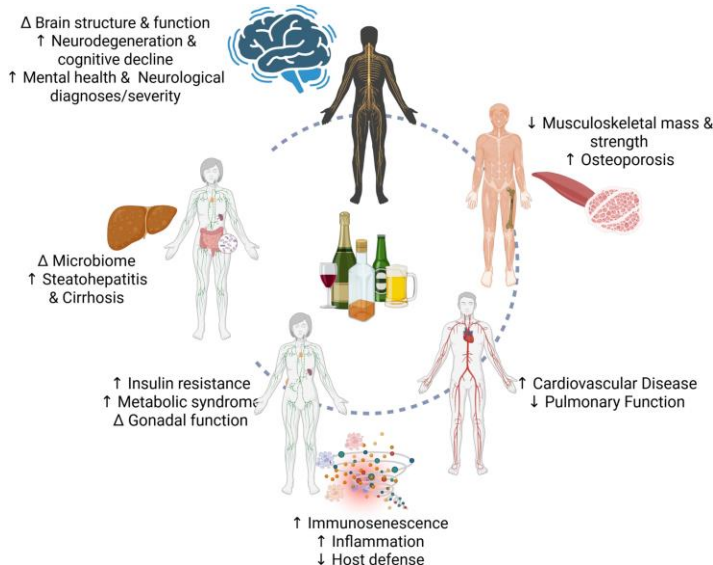
¹University of St Andrews, ²Wellcome Trust Multimorbidity DTP for Health Professionals (223499/z21/z)

GLOBAL HEALTH ISSUES

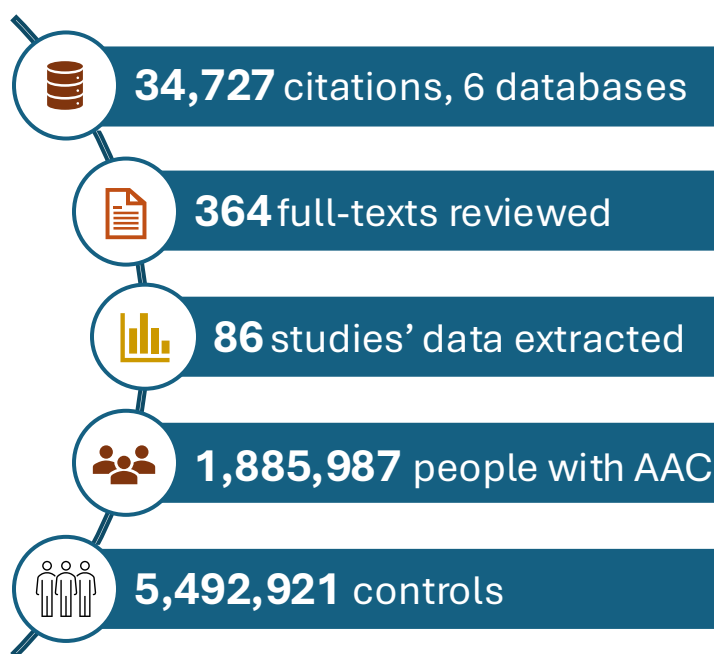
ALCOHOL

7%

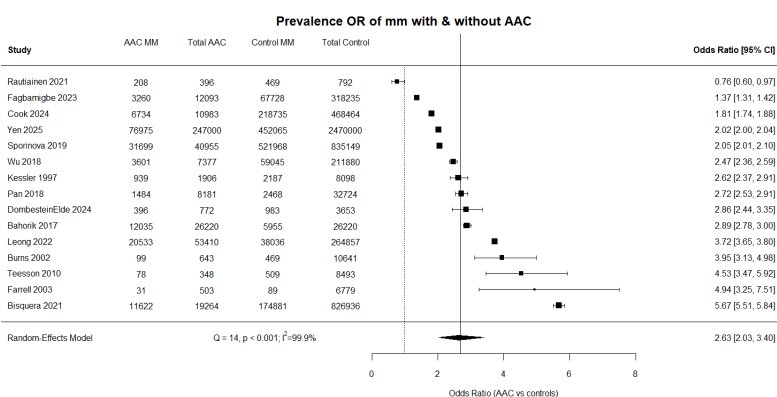
MULTIMORBIDITY



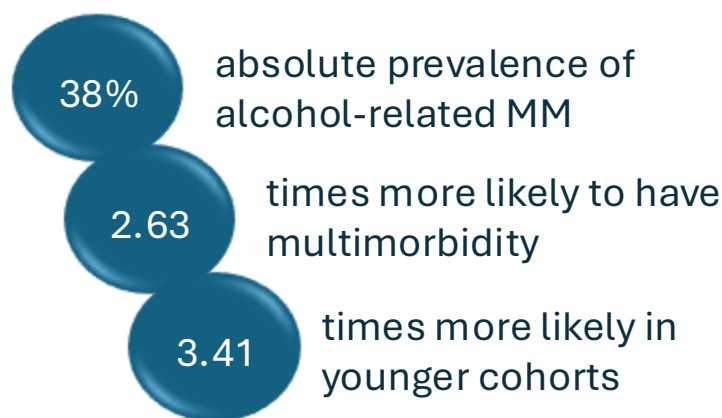
WHAT WE DID



WHAT WE FOUND



WHY IT MATTERS



Results demonstrate a **substantial disease burden**, MM is **common** and **disproportionately high** among people with alcohol-related conditions, particularly in **younger** adults

Important implications for:

- Targeted screening
- Earlier intervention
- Better integrated healthcare
- Service design
- Policy decisions
- Future research