

LMH
Lady Margaret Hall
University of Oxford

Bed & Breakfast Booking at Lady Margaret Hall (LMH) for Faculty of Medical Psychotherapy Annual Conference 2026 Wednesday 02 – Friday 04 September 2026

We have reserved a selection of comfortable en-suite rooms at LMH for delegates attending the conference. Both single and twin rooms are available, and you can choose your preferred check-in and check-out dates.

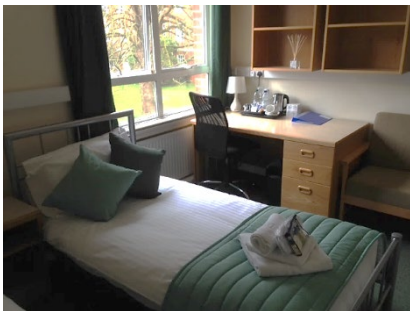
Price per en-suite room per night (including VAT & breakfast)

Single room - £118.50

The bedrooms are student rooms, simple but comfortable with a small en-suite facility. All rooms have free Wi-Fi, and are provided with a kettle, water, tea, coffee & biscuits, towels and complimentary toiletries. Guests have access to our gardens.

Check-in time is from 2pm on the day of arrival, and check-out is at 10am on the day of departure.

Accommodation at LMH



Cancellations made up to 14 days in advance will receive a full refund, less a £10 admin charge. Cancellations fees of between 25% and 50% apply for cancellations made with less than 14 days' notice. There are no refunds for cancellations made less than 24 hours before hand. Full details are provided in your booking confirmation.

Parking at the College is limited and available only by prior arrangement. To enquire about parking, please email conference@lmh.ox.ac.uk with your requested dates and times. We will do our best to accommodate your needs, subject to availability. For your convenience, we recommend taking advantage of Oxford's excellent public transport links. Alternatively, the Park & Ride service offers a convenient and affordable way to travel into the city centre.

Lady Margaret Hall, Norham Gardens, Oxford, OX2 6QA.

Instructions for Booking the Reserved Accommodation at LMH

To book, click on this link to the University Rooms website:

<https://www.universityrooms.com/en-GB/eventcode?ec=RCPSYCH2026&vid=lmhoxford>

The link will take you directly to the booking page for the Royal College of Psychiatrists Bed & Breakfast reservation at Lady Margaret Hall.

Event Code

RCPSYCH2026

APPLY

Property

Lady Margaret Hall, Oxford



From

Arrival



To

Departure



SEARCH

Enter the code **RCPSYCH2026** into the box at the top which says 'Event Code:'

You need to enter the code first for the available dates to show.

Click on 'Search' to select the number of rooms you require and make the booking.

Follow the instructions to complete the booking.

*Bookings and payments are processed via the secure site of our third-party booking provider, University Rooms (Speedy Booker). Therefore, the confirmation email you receive from their website will be your invoice. **Please note that Lady Margaret Hall will not be able to provide you with a separate invoice.** Please ensure that you input the correct contact information for invoicing when placing your booking.*

For further help or information, please email: conference@lmh.ox.ac.uk