

# Improving the quality of risk assessment conducted for new psychiatry inpatients

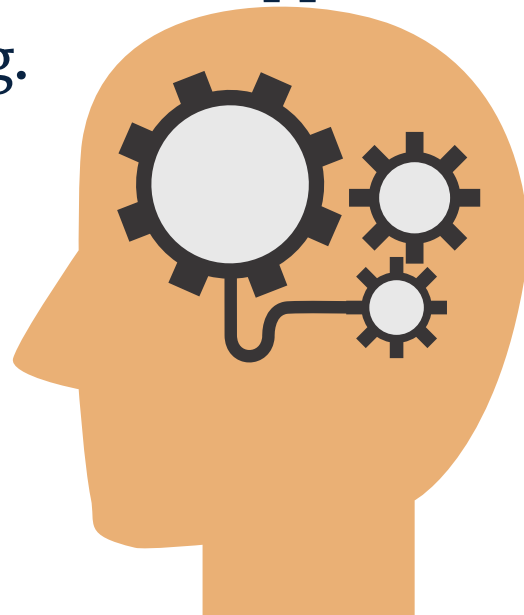
Dr Nikhita Handa and Dr Sanjeev Pramanik FY2

Supervisor: Dr M Shivalingam, Consultant Psychiatrist, Lancashire Care Foundation Trust

## Aims and Methods

**Aims:** An audit was conducted to assess if thorough risk assessments had been documented in electronic clinical record notes (ECR) clerking for new patients in Lancashire mental health units. Risk assessment is a vital part of admission clerking and when done well it can prevent early incidents and aid the ward nursing team greatly.

**Methods:** 30 inpatients on acute male and female psychiatric wards were selected (February - March 2020). The admission clerking was analysed for clear statements of risk to self, others or property. Within these domains, quantitative results were calculated. The term 'risk' was also searched for each patient in their ECR notes to assess if risk assessments appear in notes other than admission clerking.



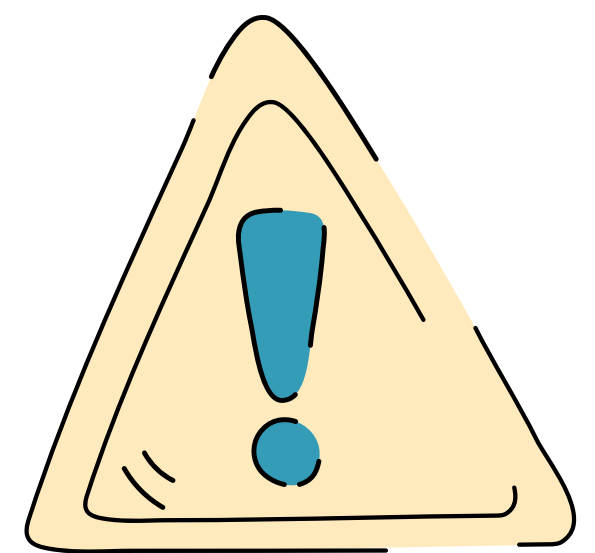
## Results

12 out of the 30 patients had a full risk assessment documented in their clerking (40%).

14 patients had no mention of risk assessment (46%).

Of the assessments completed in clerking; **all** assessed self harm/suicide risk and violent risk to others.

**Only 1 mentioned absconding, 8 illicit substance use and 8 vulnerability.**



## Next Steps

- **More in depth teaching of risk assessing during junior doctor induction has been created and delivered**
- **Reaudit the risk assessments in 3 months time to see if the quality or content has changed**



## Conclusion

Documentation of risk assessment was lacking in clerking. When risks were assessed it was mainly violent risk to self or others. Vulnerability and physical health risks were poorly documented. Based on these findings we have designed more comprehensive teaching on risk assessments and a template for how to complete a risk assessment. This is being reaudited to assess if the changes made have had an impact on the quality of risk assessment conducted.