

Improving ADHD Diagnosis In The CJSE: A Feasibility Study Using QbTest (FACT Study)

Dr Mindy Reeves (MRCPsych), Dr Vaseem Mohammed (MRCPsych), Lloyd Wilkinson-Cunningham, Dr Charlotte Lennox (CPsychol, PhD), Professor Prathiba Chitsabesan (FRCPsych)

Background

The prevalence rate of ADHD for young people in the criminal justice secure estate (CJSE) is approximately 12% which is significantly greater than the 5% seen in the general population. There are concerns that young people in the CJSE have undetected neurodisabilities due to a lack of appropriate screening and assessment processes. Young people with untreated ADHD have been found to have an eight-fold increased frequency of aggressive incidents in secure settings. QbTest is a computer task that measures three core aspects of ADHD including attention, impulsivity, and motor activity. There are several studies that demonstrate the clinical utility of QbTest in aiding diagnosis. While the use of QbTest in the community has been promising, there are a number of unknowns in relations to its use in the CJSE.

Methods

The study is a parallel two group randomised controlled trial with allocation to the intervention group which consists of QbTest plus usual care or the control group which offers usual care only. The potential participants are identified by the prison healthcare team when undertaking the CHAT on admission. Quantitative and qualitative data will be collected at baseline, 3-months, and 6-months. COVID-19 has caused delays in the study as there has been no access to the prison or University of Manchester since March 2020.

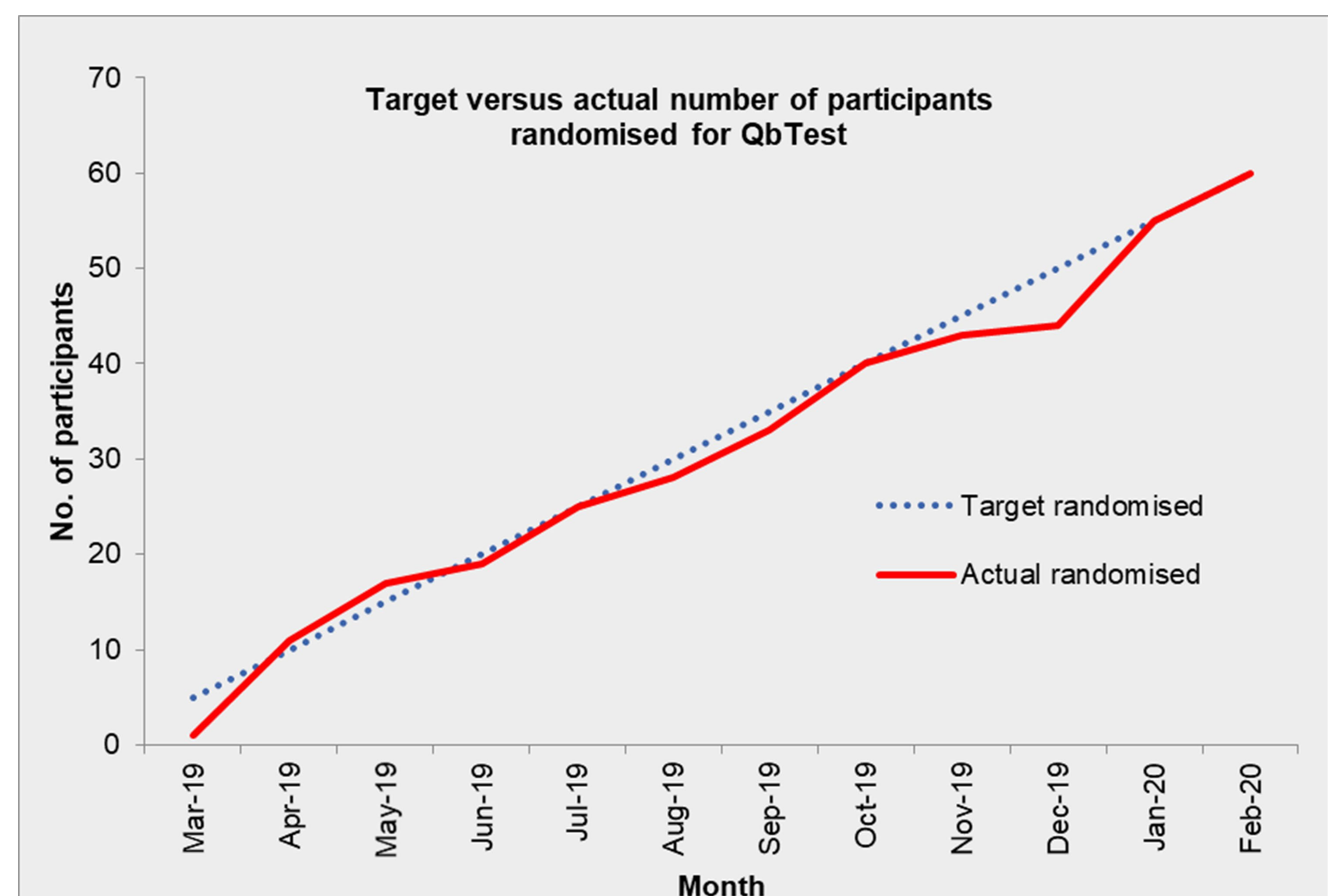
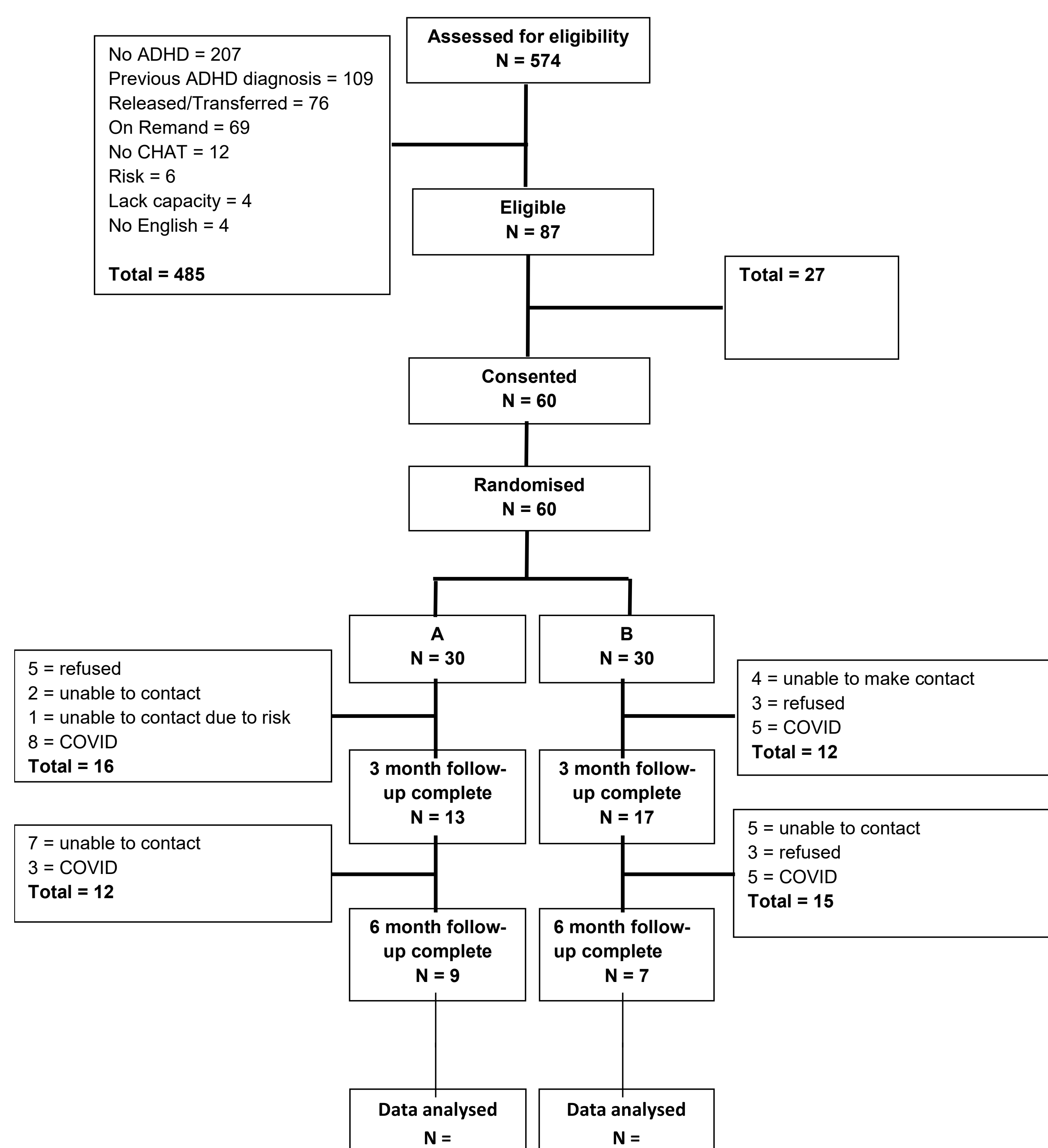


Figure 1: QbTest Consort chart



Feasibility Criteria



ELIGIBILITY RATE

Eligibility rate of 15% is similar to the initial recruitment rate aims.

RECRUITMENT RATE

An average of 5 young people per month were recruited and randomised into the study achieving the set target. 1 young person dropped out of the study after randomisation.



QbTEST COMPLETION

There are 2 outstanding QbTests to be completed due to COVID-19 and these should be completed by end of September 2020.

ATTRITION RATE

The 3-month attrition rate was 30% (retention rate 70%) and the 6-month attrition rate was 43% (retention rate 57%).

