

APPLYING TO CORE PSYCHIATRY TRAINING

HOW CAN CONSULTANTS BEST SUPPORT POTENTIAL TRAINEES IN THEIR APPLICATION

DR CHARLOTTE BLEWETT – CONSULTANT PSYCHIATRIST IN STUDENT MENTAL HEALTH AND OLD AGE PSYCHIATRY

SHEFFIELD HEALTH AND SOCIAL CARE NHS FOUNDATION TRUST

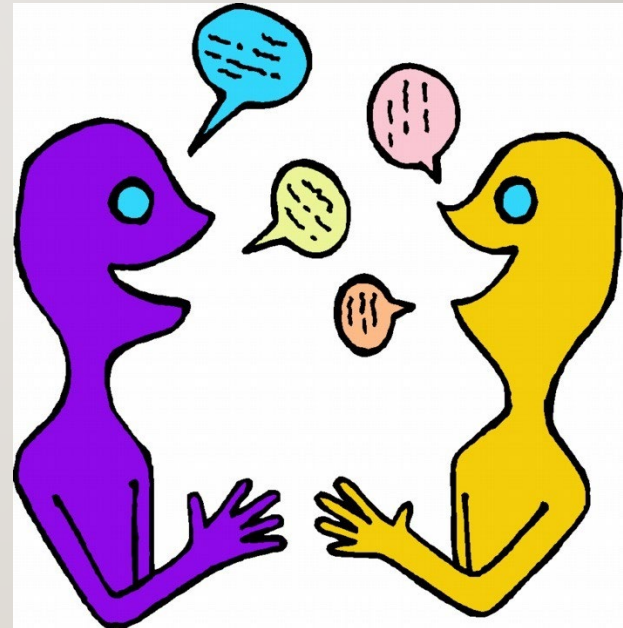


FIRSTLY WHAT DOES YOUR PSYCHIATRY TRAINEE OFFER?

- Outside of Psychiatry placements at Medical School this is likely the trainees first time working in Psychiatric environment
- What training opportunities does the post offer:
 - Key skills for reaching foundation programme competencies/ CTI personal specification
 - What unique training opportunities can you offer
 - Do they need a more tailored induction to your department?
 - Preparation for on calls
 - Protected supervision time and wider support from MDT- including speciality doctors, higher trainees, senior practitioners

SECONDLY WHAT DOES YOUR TRAINEE OFFER?

- Get to know your trainee 😊
- Where did their interests in Psychiatry come from?
 - Sub-speciality interests
 - Outside of Psychiatry



THIRDLY SUPPORTING THE APPLICATION PROCESS

- Be aware of the Core Psychiatry training application windows
- CTI Psychiatry Personal Specification
- Offer Taster days for applicants who may not have a psychiatry post in their programme or learning about new sub-speciality
- MSRA preparation – trainees within Foundation Training programme have pre-allocated study leave – does your trainee have adequate time to prepare?

FINALLY THE MSRA.....

- Multi-Specialty Recruitment Assessment – already used across a wide variety of specialities including Psychiatry
- Two parts:
 - Clinical Problem Solving – based at foundation competency level
 - Professional Dilemmas (using SJT format) competencies being examined directly relate to Generic Professional Capabilities Framework outlined by GMC required capabilities of all doctors
 - Significant evidence of correlation of MSRA score resulting in trainees successfully moving through and completing core psychiatry training
 - Could your local education department fund for resources for trainees to prepare?
 - Ensure your trainee has appropriate exam leave to attend