

FROM ISOLATED POCKETS TO A DEVELOPED NETWORK OF SUPPORT

How North Staffordshire Learning Disability Services Now
Support Safer Sex and Relationships

Dr Ruth Richards (Consultant Clinical Psychologist)
Phil Emery (Learning Disability Nurse)

Leanne Race (Trainee Psychologist)
Matt Doughty (Forensic Liaison Lead)



MY, HOW THINGS CHANGE.... OR WAS
IT JUST THAT WE CHANGED?





Pre 2010: 1:1
work
(problem)



- I:I therapy and assessment work.
- Risk and “problem” focused

IN THE VERY BEGINNING.....

(or at least from the start of our timeline)





IN THE BEGINNING.....

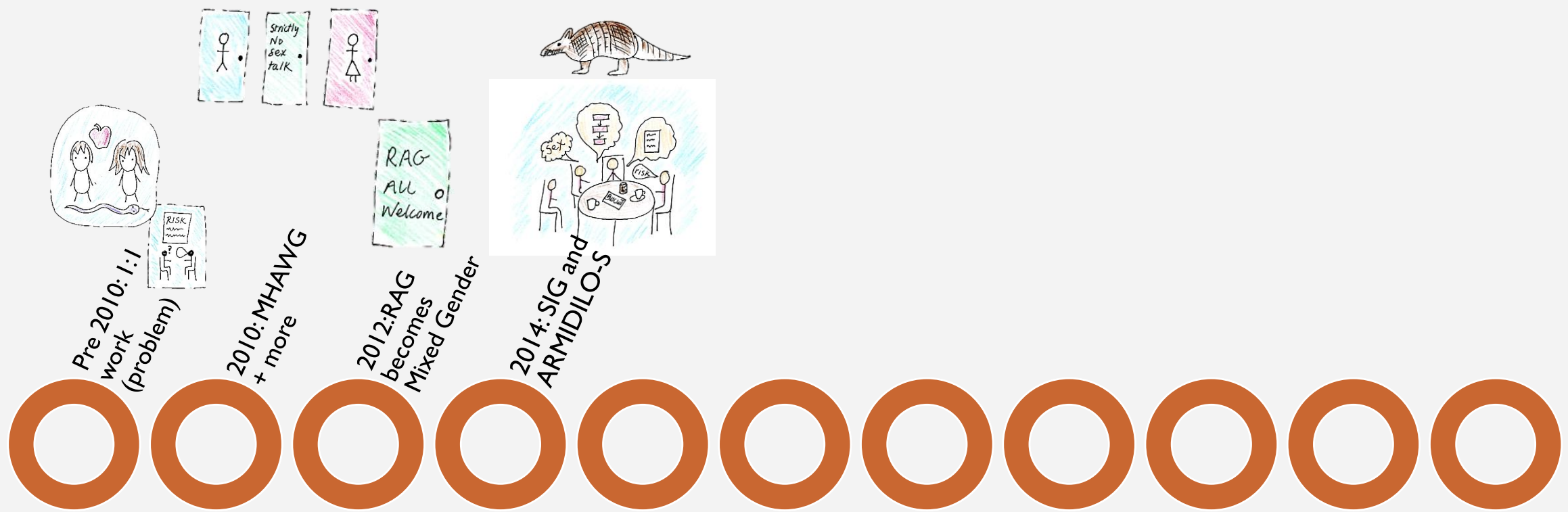


- Men's Health And Wellbeing Group
- Women's Group
- Mixed Gender group limited content-no sex (Moorlands Area)



Relationship Awareness Group!!!

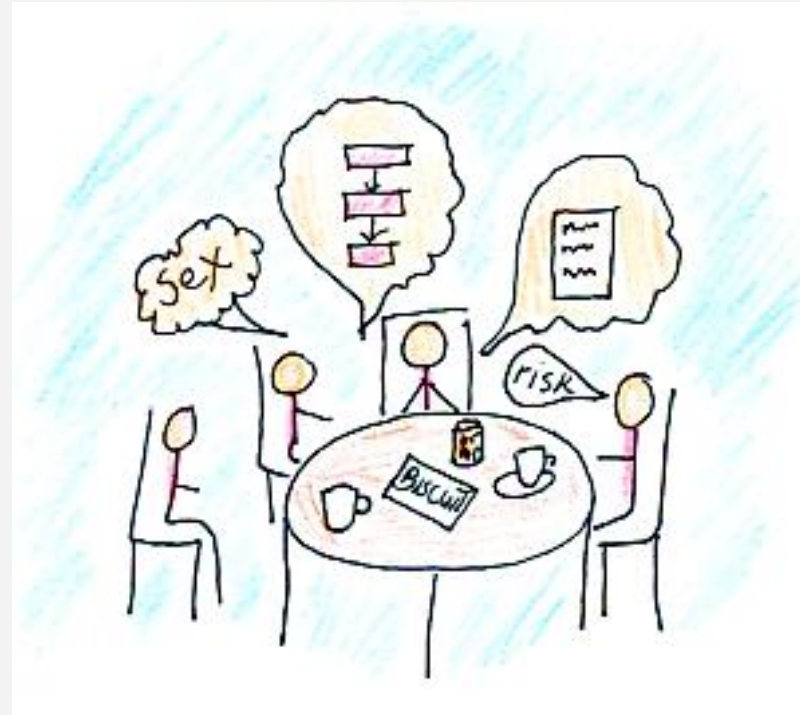
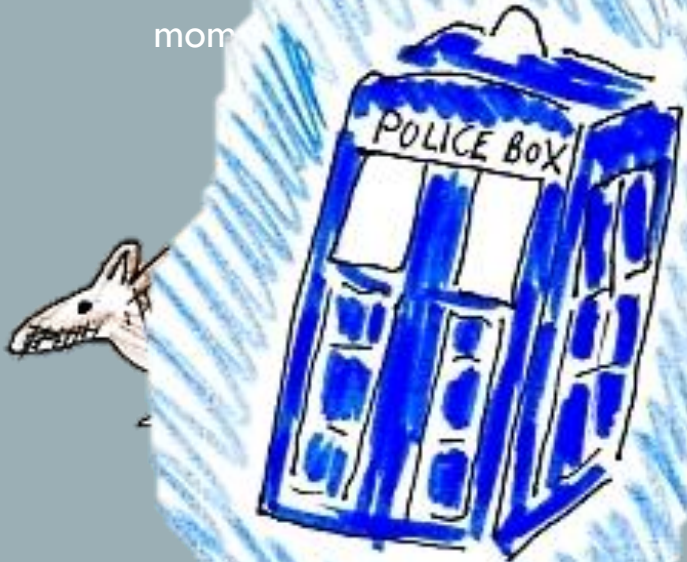




SIG AND ARMIDILO-S

- ARMIDILO-S: Funding to attend training was secured. Very quickly became utilised to assist risk management.
- Special Interest Group (SIG) was founded. This included a drop-in option across all LD services. Linked with other services.

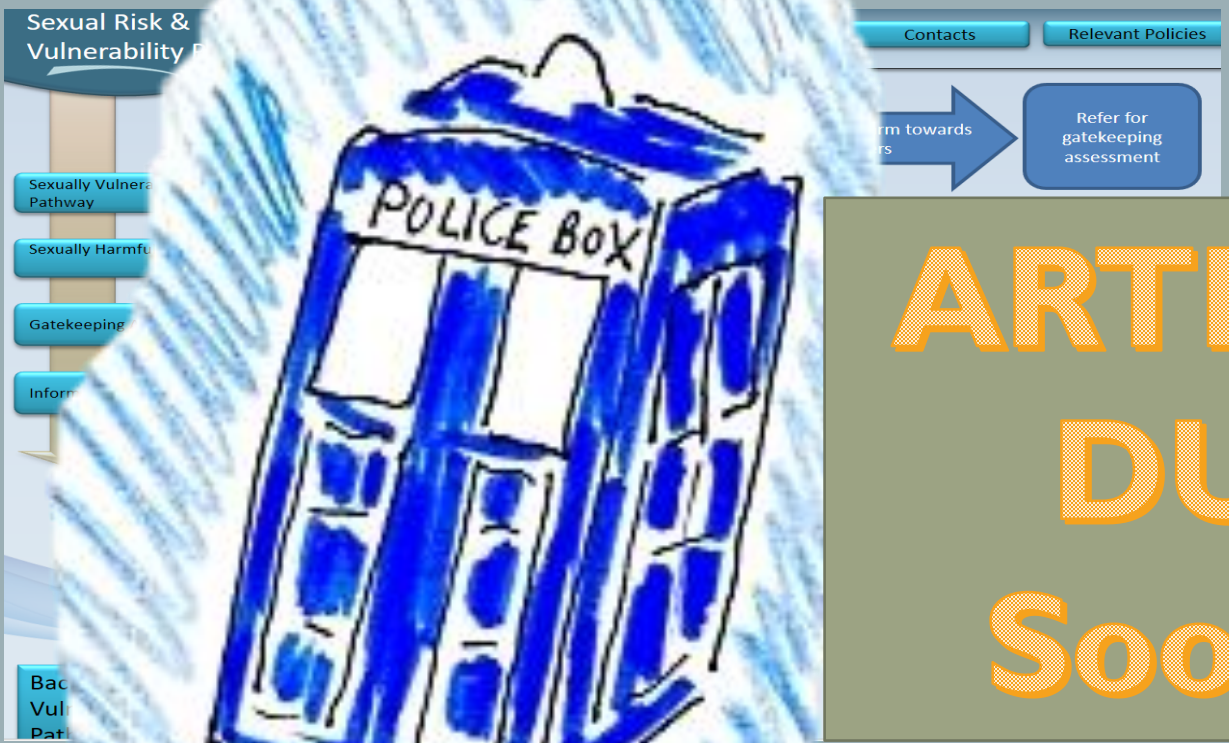
2014: More and more



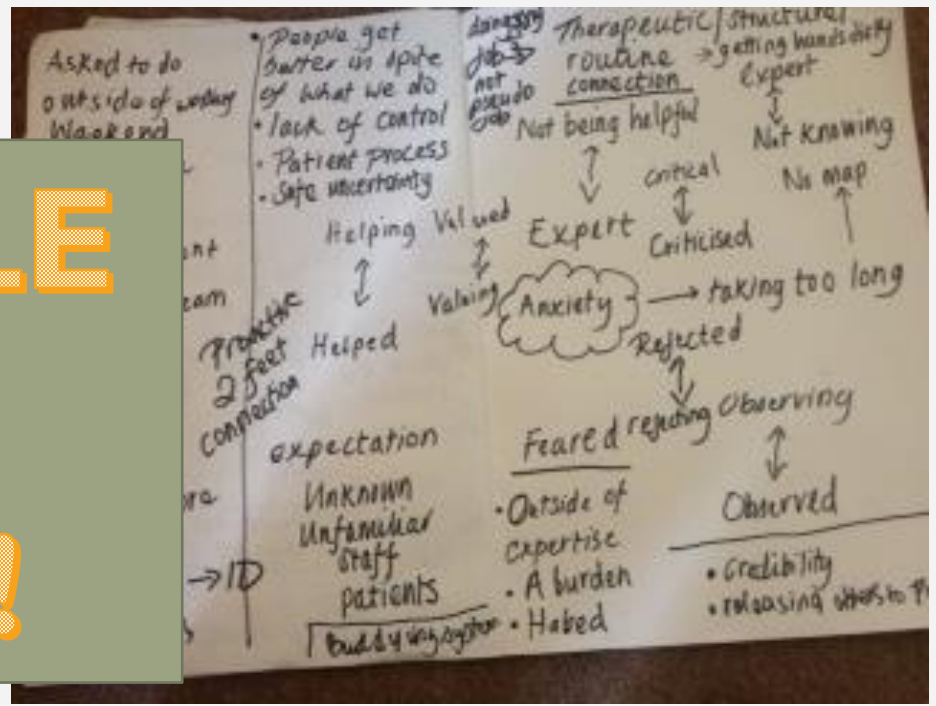


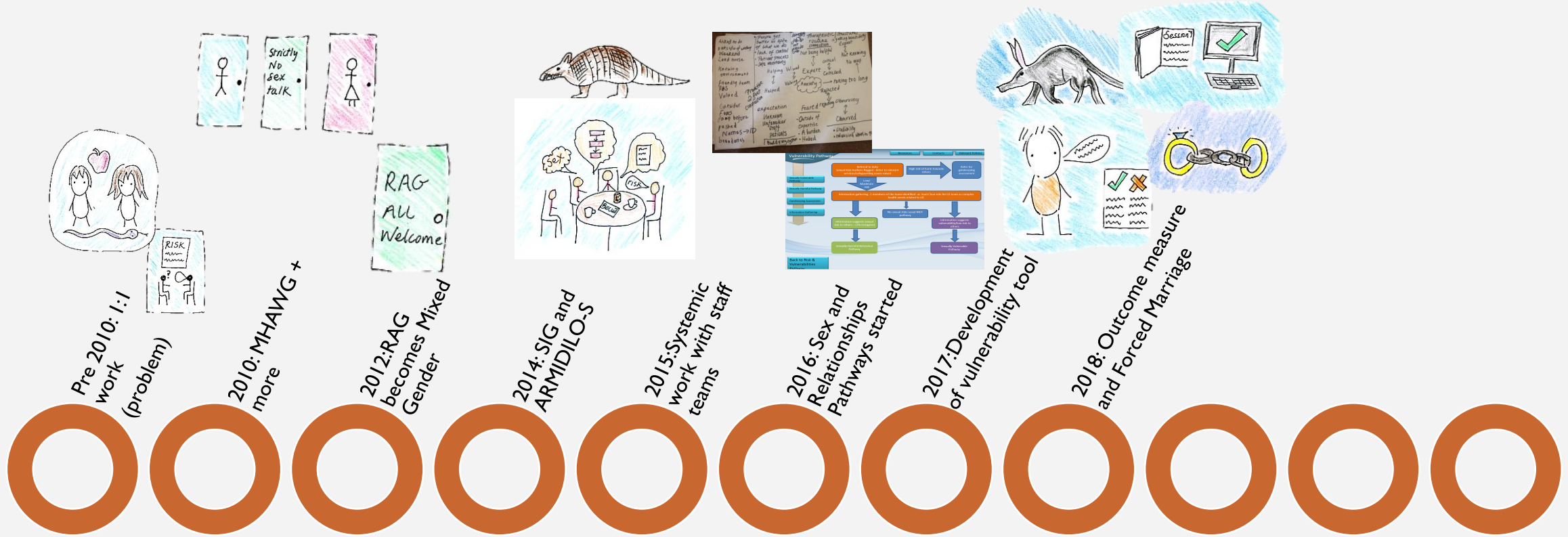
PATHWAYS AND FURTHERING SYSTEMIC WORK

- Pathways (assisted by the SIG):
 - Sexually Harmful Behaviour Pathway
 - Sexual Vulnerability Pathway
- Thinking about continuity of support with staff teams: Map and Talk



**ARTICLE
DUE
Soon!!!**



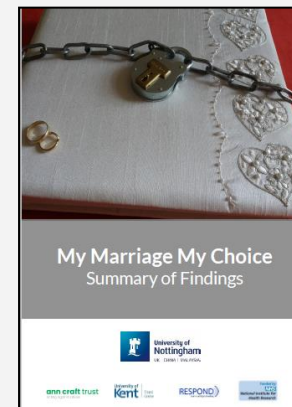


VULNERABILITY TOOL, OUTCOME MEASURES AND FORCED MARRIAGE

2017-2018: There is still much to do...



- Project to develop Vulnerability Assessment Tool begins
- RAG started pre and post assessments to improve outcome measures
- 7 Session RAG...
- Work around Forced Marriage becomes formalised (with input from our colleagues; Emily Mycock-LDN and Helen Campbell-OT)





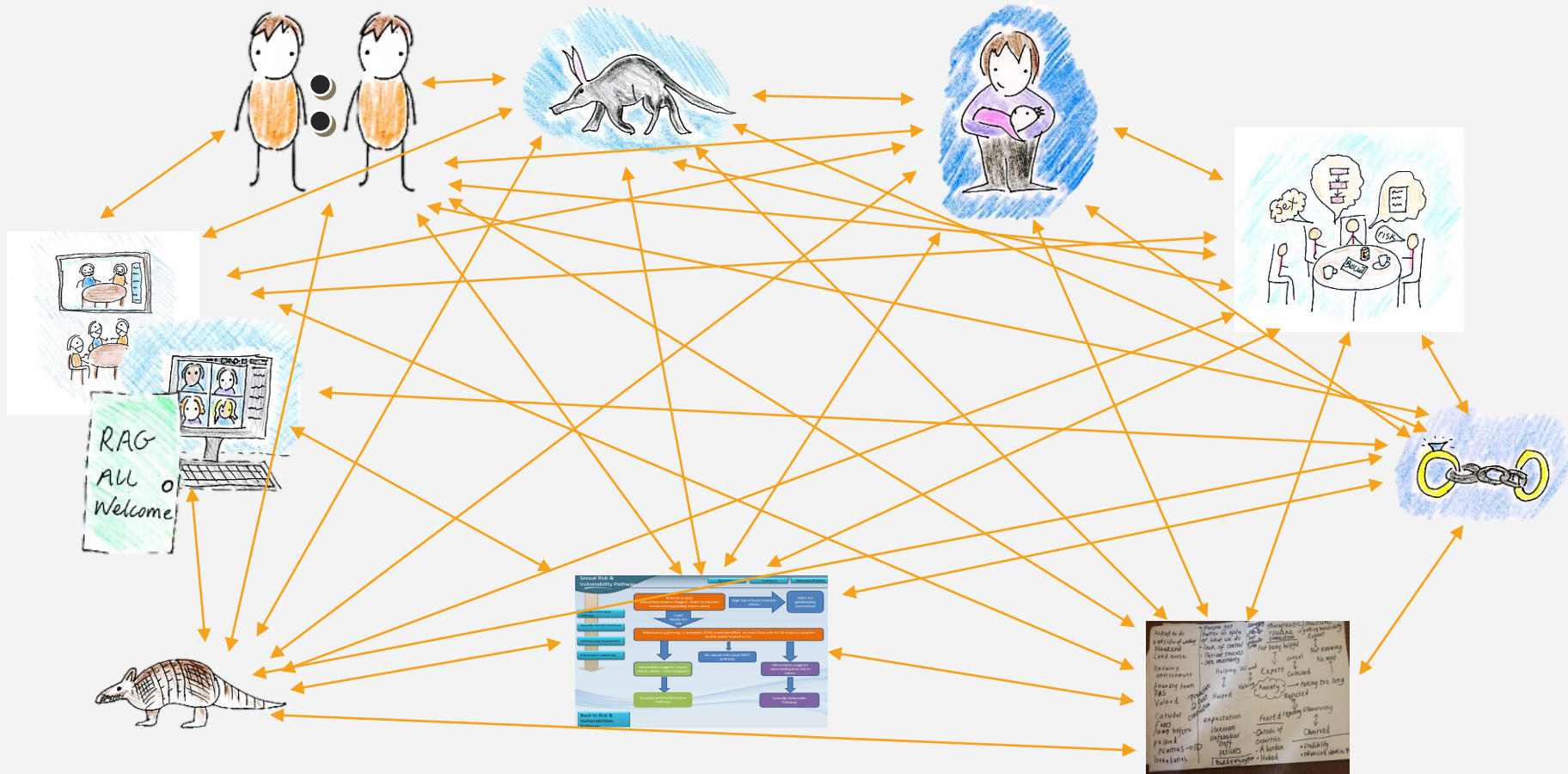
FURTHER PARENTING PROGRESS, WRITING A MANUAL, VIRTUAL GROUPS AND LINKED ROOMS

2019-2021: Changes both planned and
forced...



- OT involvement with parents for many years but LD Awareness delivered to midwives; some became LD Champions!
- A manualised approach was developed to the group
- Virtual sessions.... Not that successful but in the bank
- Adapted group work due to room capacity

THE NET RESULT! (...SORRY)



MEET BOB....

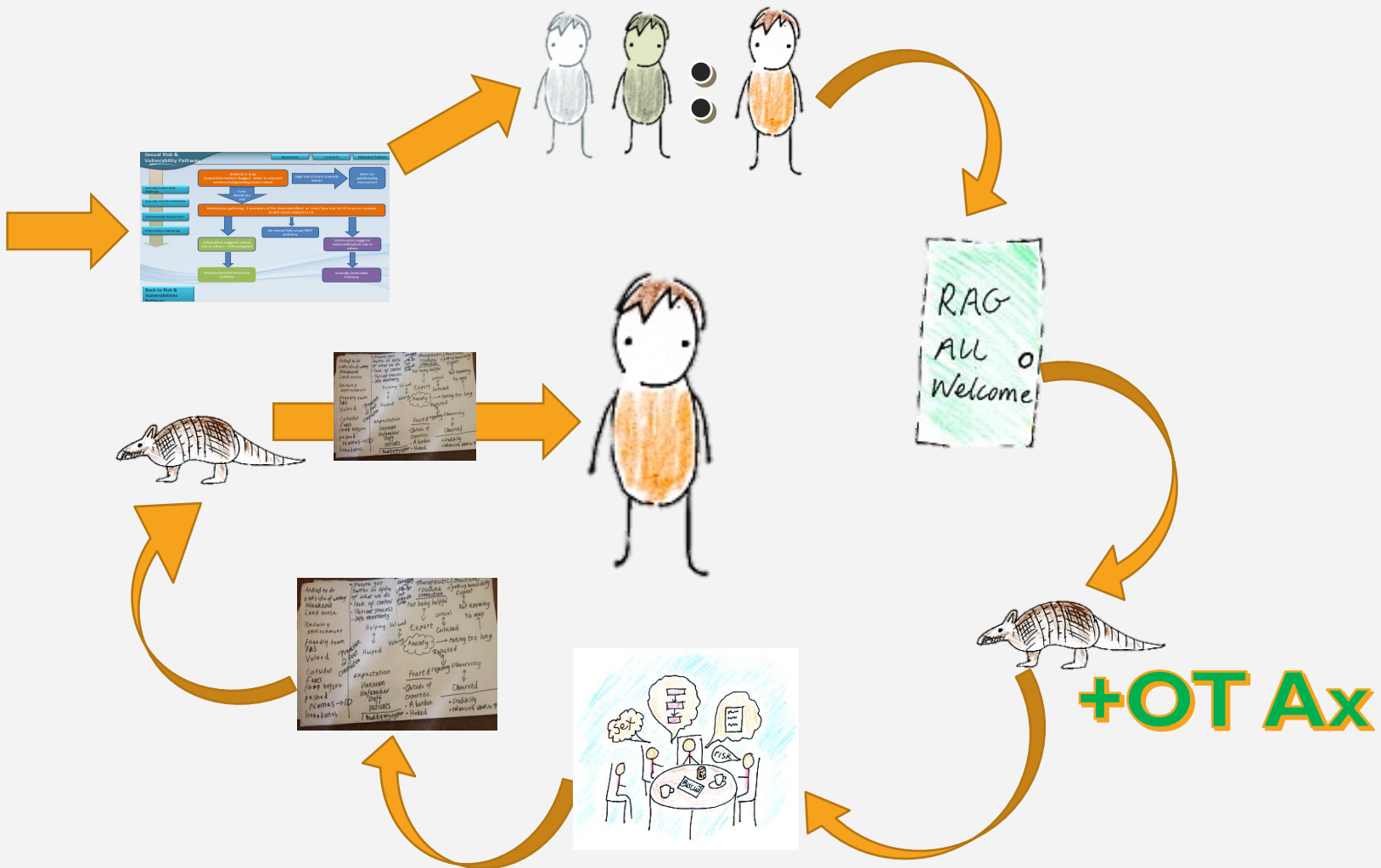
- We first met him when he was 17 and a half
- Everyone was worried about how Bob interacted with peers
- Police involvement due to SHB
- Family were under stress
- Specialist FE College were worried
- Relationship managed by parents.
- Some sex education had been delivered by a children's charity and college
- Despite high levels of restriction incidents of concern had continued to occur
- All of Bob's social activities happened with family members present



CASE STUDY: BOB



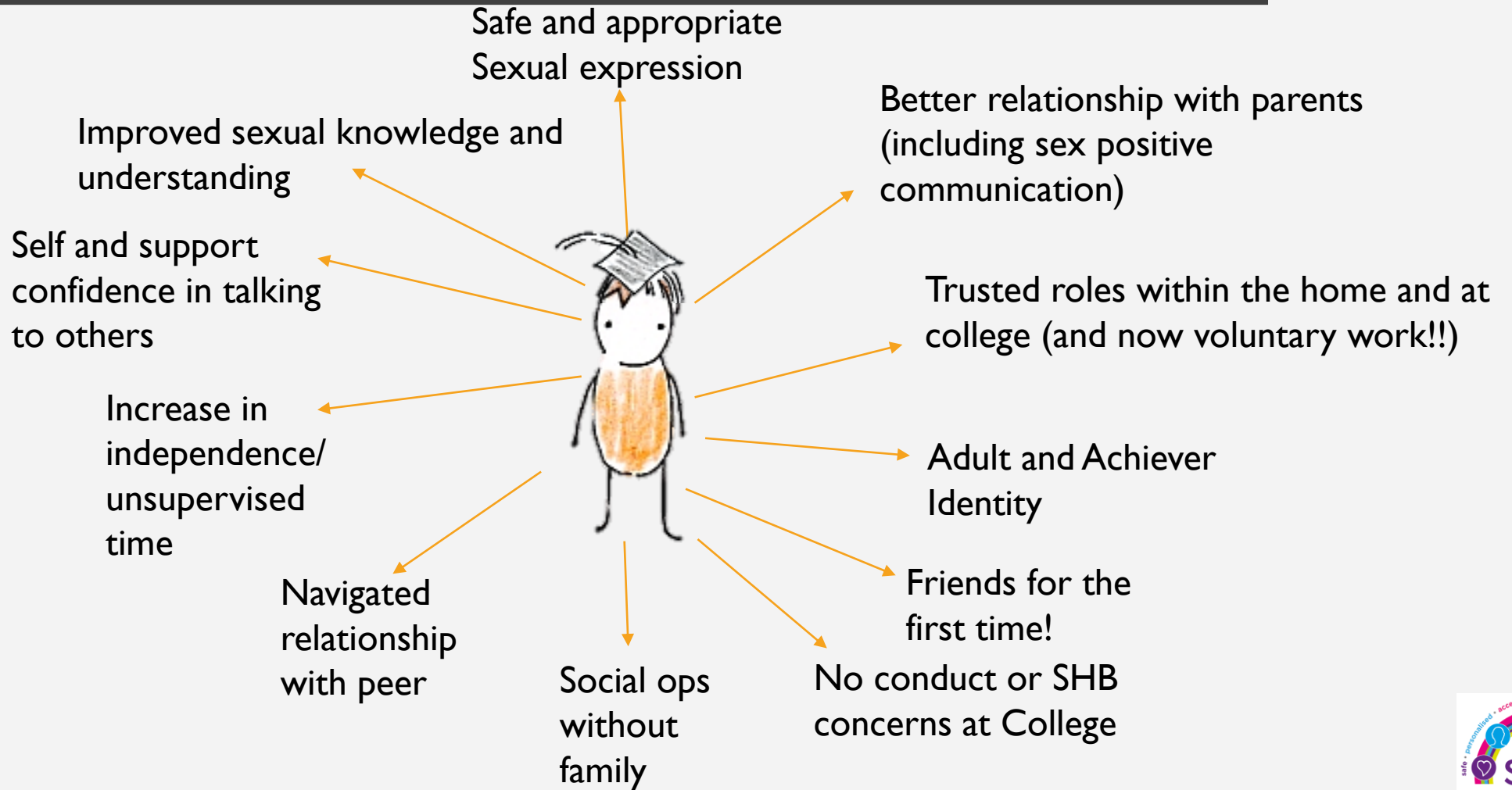
Referral



+OT Ax



HOW BOB WAS DOING LAST TIME WE SAW HIM.....



WHAT HELPED US GET THERE

- Supportive managers - time
- Research and Innovation department
- Local clinical psychology doctorate course
- International experts
- MDT approach
- Local University writing group
- Biscuits!!!!



REFERENCES

- Potter S(2020) Therapy with a Map:A Cognitive Analytic Approach to helping relationships. LUMINATE: www.pavpub.com
- Patterson,A. and Clawson, R. and McCarthy, Michelle and Fyson, R. and Kitson, D. (2018) My Marriage My Choice. Summary of Findings
- Toolkit for Assesing Capacity To Consent to Marriage (2019)
<http://mymarriagechoice.co.uk/>
- Doughty M, Race L, Emery P et al (2017) Talking about sex: a relationship awareness group for adults with a learning disability. Learning Disability Practice. 20, 5, 17-22. Date of submission: 26 January 2017; date of acceptance: 15 June 2017. doi: 10.7748/ldp.2017.e1836
- Watkin F, Emery P, Doughty M (2020) How special interest groups can support safe sexual well-being in adults with learning disabilities. Learning Disability Practice. 2020 doi:10.7748/ ldp.2020.e2085