

**Finding Support-  
Nikki  
Zimmermann  
London  
Neurology  
Project**



**Contents**

- Background and Structure of Alzheimer's Society
- New Deal on Dementia
- The London Neurology Project
- Dementia Specific v Dementia Friendly services
- Dementia Action Alliance



**Alzheimer's Society Est 1979**  
Fund Research  
Campaign for Change  
Give People affected by dementia a Voice  
Information and Support  
Promote Dementia Friendly Society  
  
850,000 people with dementia in UK

**Structure of Support**

**6 Regions**

- Central,
- North East
- Northern Ireland & North West
- Wales and West Midlands
- South West
- London and South East

London - 4 Localities  
32 boroughs -29 Offices  
Not all areas have services



**Dementia Adviser  
Dementia Support  
Worker  
Peer Support Groups  
Cafés  
Singing for the Brain  
Information and  
Education Programmes  
Side by Side  
Activity Groups**

**LOCAL OFFICE SERVICES**  
- Anyone can refer



Alzheimer's Society

**EACH AREA IS DIFFERENT AS THEY ARE FUNDED BY LOCAL CCG AND LOCAL AUTHORITIES**



Each area has their own local priority where dementia sits on the agenda ??

**Merton Dementia Hub**  
  
DA  
DSW  
Cafés  
Activity groups  
Workshops  
Peer support groups  
Singing for the brain  
Table tennis  
Cognitive Stimulation Therapy



### The New Strategy- New Deal on Dementia

New Deal on: Support Society Research

7

- Support – Expand and reach more people \*\*
- Society – Create a more Dementia Friendly and Inclusive Society
- Research – Invest more money into Centres of Excellence and the Dementia Research Institute



### The London Neurology Project

Gap identified

Need for support in Neurology Clinics

Specialist Service and expert knowledge

8

- Too much generic (and inappropriate) information given out
- Empowering people
- Person Centred Care
- Continuation of care
- Variation in hospitals
- Pre, Peri and Post Diagnostic Support
- Partnership Working with NHS Staff
- Collaboration with Community Support Staff
- Expansion into Support Groups

Alzheimer's Society

### London Boroughs ....and beyond



Alzheimer's Society

9

### STATISTICS (16M)

318 PATIENTS

58 AREAS

3 HOSPITAL NEUROLOGY DEPTS

15 TYPES OF DEMENTIA

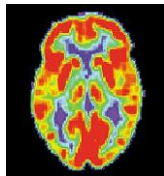
10



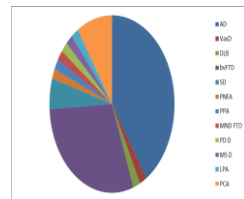
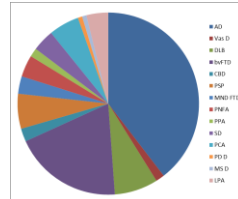
### St George's Hospital

11

- Pre Screen Clinic Lists
- Pre appointment support
- Previous assessments, investigations etc
- Peri Support in clinic assessments
- Post diagnostic support
- Research Meetings
- Support Group
- Steering Group



### Diagnosis Types – St George's Hospital Cognitive Neurology Clinic



12

Alzheimer's Society

**What I do?**

**Information**

**Support and Empower**

**Connect to Local Communities**






**Information**

Factsheets  
Books  
Literature  
Websites  
Blogs

Face to face contact  
Person Centred Care  
Support plans

Beware of ....

Alzheimer's Society

**In House Support**

- Not all areas have a DA
- Not everyone wants a home visit
- At the end of the day people want to live 'normal' lives

- Embedded with the Specialist team of Consultants
- Expert knowledge of rarer types of dementia
- Resourcing local support

Support doesn't just mean providing information and finding activities

It can also mean empowering people and finding opportunities for them to make a real difference

Examples : Media, Recruitment, Art exhibitions, Journal writing

Alzheimer's Society

INFORMATION ON DIAGNOSIS

LOCAL INFORMATION CONTACT SHEET

LPA, BENEFITS, COUNCIL TAX

DEMMENTIA FRIENDLY ACTIVITIES – WALKS, COFFEE

MORNINGS, ART EXHIBITIONS, OPERA

RARE DEMMENTIA SUPPORT GROUP

SPEECH AND LANGUAGE THERAPY OPTIONS

COUNSELLING

Case study



16

**PATIENT FEEDBACK**


The support provided is timely and seamless producing a positive service. The impact on patient and carers is very empowering

Thank you for all your help. It's like my Dad has got his life back

You cannot know how much we appreciate this. This is a hugely positive way to approach an otherwise hugely depressing situation. We would love to get involved and help!

Thank you for your helpful immediate response. I told my wife that it was a very lucky break to be introduced to you. You made both of feel very comfortable and at ease.

I'm back in the game!



17

[www.alzheimers.org.uk](http://www.alzheimers.org.uk)

-Find support near you


-pop in postcode

Local Authority website

- Adult Social Care

Dementia Action Alliance (DAA) website

FINDING SUPPORT  
Helpline  
Talking point



# Dementia Specific Services

19



Alzheimer's Society Services Day Centres Specific Activity Groups



DEMENTIA FRIENDLY ACTIVITIES

PHOENIX CINEMA SCREENINGS

DEMENTIA FRIENDLY THEATRE

INMIND ART TOURS AT ROYAL ACADEMY

DEMENTIA FRIENDLY OPERA

ART THERAPY

DRAMA GROUP

Dementia Friendly Activities

# Dementia Action Alliances

21

Established 2010 with the launch of the National Dementia Declaration with members committing actions that radically improve the lives of people with dementia

- Members include:
  - 354 Local Alliances
  - 7024 Members
  - 24635 Actions to make life better for people with dementia
- Leading charities
- Hospitals,
- Social care providers,
- Wellbeing organisations.
- Everything we do is in partnership, and informed by people living with dementia, and their carers.



THANK YOU

LONDONNEUROLOGY@ALZHEIMERS.ORG.UK

NICOLA.ZIMMERMANN@ALZHEIMERS.ORG.UK

Specialist Service Alzheimer's Society

22