



# Consultation – Integrated Prison Mental Health and Learning Disability Service Specification

Kate Morrissey – National  
Programme Lead, Mental Health –  
Secure and Detained

Audrey Lazaris – Commissioning  
Manager, Health and Justice

# Consultation Overview

- This draft specification describes an integrated prison mental health and learning disability service.
- 30 day consultation (23<sup>rd</sup> October – 22<sup>nd</sup> November)
- There have been limited changes in the layout and expectations of service delivery in the revised draft.
- The Objectives and Outcomes of this specification have been extensively revised to reflect current practice and levels of population need.
- Embedded the 3<sup>rd</sup> Edition of the Quality Network Standards
- Consulting to ensure that all expected elements of a prison mental health and learning disability service have been included in this document.
- After a 30 day consultation, the responses will be collated and the specification will be amended as appropriate prior to publication in December 2017/January 2018.



# The Specification

- Formed by detail of the service to be commissioned and a standard annex, which is relevant to all Health and Justice commissioned services
- Embedded in the specifications Objectives and Outcomes are examples of the way in which the provider can demonstrate – in addition to HJIP's and other performance data, that they are meeting the outcomes



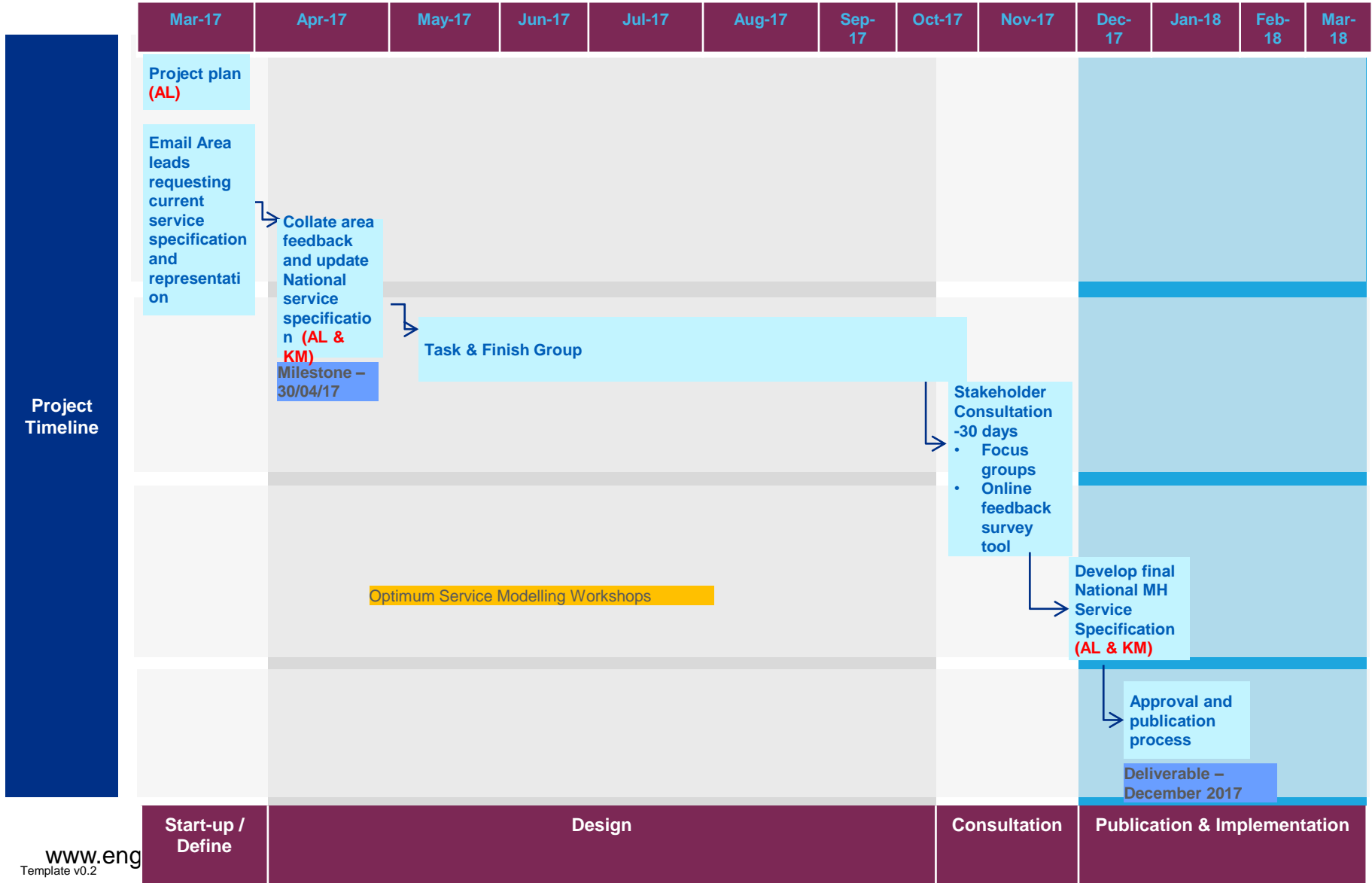
# Developed by stakeholders

- Task and Finish group chaired by consultant psychiatrist
- Membership consisting of representatives from RCN, Quality Network for Prison Mental Health, Health and Justice Clinical Reference Group, Commissioners – Specialised Commissioning and Health and Justice, HMPPS, PHE, and service users
- 4 meetings May – August 2017



# Plan on a Page – Mental Health Service Specification

Responsible Officer:  
AL = Audrey Lazaris  
KM = Kate Morrissey



# The process

- We are not consulting on the full document inc. appendices
- We are only consulting on the areas that have been extensively revised - Objectives, Outcomes, Cohorts
- Events with stakeholders – small group discussions
- Focus groups within prisons
- Online survey
- We have limited time today- notes will be taken however to ensure that don't miss anything and we hear what you have to say then please complete the online survey.
- <https://www.surveymonkey.co.uk/r/ZBZTLXR>



# General Overview

- This draft service specification outlines what should be included in a trauma informed prison-based mental health service that is integrated with wider health and other psychological and social support services.
- It includes desired objectives and outcomes concerning supporting people with mental health issues and also providing support for prisoners with learning disabilities and other vulnerabilities.
- The draft service specification aims to address inconsistency in care quality, differing levels of access, and out-dated service models.



# Objectives

## Objective 1

Improved mental health and emotional wellbeing

## Objective 2

Contribute to the rehabilitation of people in prison through improving mental health and contributing to sentence planning where appropriate

## Objective 3

Improved continuity of care through the gate and within prison

## Objective 4

Enhancing quality of life for people with care and support needs





# Objectives and Outcomes

- To assist with the evaluation of the Objectives, the Specification incorporates Outcomes that cover the following four domains:
  - PROMs: Patient Reported Outcome Measures
  - PREMs: Patient Reported Experience Measures
  - CROMs: Clinical Reported Outcome Measures
  - PATOMs: Partnership Reported Outcome Measures



# Cohorts

Patient Cohort	Relevant guidance
<b>Women</b>	<p>RCPSYCH Perinatal mental health services: Recommendations for the provision of services for childbearing women (2015)</p> <p>RCPSYCH Caring for Women with Mental Health Problems Standards and Competency Framework for Specialist Maternal Mental Health Midwives</p>
<b>Transgender</b>	RCPSYCH Good practice guidelines for the assessment and treatment of adults with gender dysphoria
<b>Personality Disordered</b>	<p>NICE Quality Standards: Personality disorders: borderline and antisocial</p> <p>NHS National Institute for Mental Health in England Personality disorder: No longer a diagnosis of exclusion. Policy implementation guidance for the development of services for people with personality disorder</p>
<b>Older people</b>	RCPSYCH Standards for Inpatient Older Adults Mental Health Services: Fourth Edition
<b>Black and Minority Ethnic</b>	<p>RCPSYCH Improving in-patient MENTAL HEALTH services for Black and minority ethnic patients</p> <p>MIND Mental health crisis care: commissioning excellence for Black and minority ethnic groups A briefing for Clinical Commissioning Groups March 2013</p>
<b>Protected Characteristics</b>	The needs of individuals with any of the Protected Characteristics should be taken into account in line with current legislation, Equality Act 2010.

- Do these cohorts reflect the needs of the prison population?
- Are there any additional cohorts that you feel should be included in this specification?



# Anything that we have missed?

- Do you have any other comments or questions?



# Thank you for your time

- If you would like to provide feedback, please email us and we will send a copy of the draft specification and a link to the survey:
- [Kate.Morrissey@nhs.net](mailto:Kate.Morrissey@nhs.net)
- [Audrey.Lazaris@nhs.net](mailto:Audrey.Lazaris@nhs.net)

