

August 2020

Roll out of telemedicine consultations with individuals in the secure and detained estate – briefing note for NHS Trusts and Foundation Trusts

- As part of the COVID-19 response, the NHS England and NHS Improvement (NHSE/I) Health and Justice Team have supported the rapid rollout of an approved video consultation platform and critical hardware across 135 secure sites. This includes prisons, immigration removal centres (IRCs), and the entire children and young people secure estate (CYPSE) in England. The list of 135 sites are included in Annex 1.
- Although many NHS trusts and foundation trusts have deployed and adopted video consultation solutions as part of their COVID-19 response, secure settings are restricted to using digital solutions approved by Her Majesty's Prison and Probation Service (HMPPS).
- Two video consultation platforms are currently approved by HMPPS for use in secure settings, [Visionable](#) and [Involve](#). While we are aware many trusts are using Attend Anywhere, AccuRx and other similar video platforms these are not currently permitted for use in secure settings.
- The NHSE/I Health and Justice team have purchased 2,000 Visionable licences for these secure sites to deliver video consultations for a two-year period. The licence period is 8 June 2020 – 2 June 2022.
- It is anticipated that secure settings will be ready to deliver video consultations with NHS trusts and foundation trusts by the start of September 2020.

What do NHS trusts and foundation trusts need to do?

- Healthcare teams in secure settings across England are very keen to link with their local trusts to develop a process to enable video consultations to take place. In many cases, prison/IRC/CYPSE healthcare staff do not know who best to contact in the trust to start these conversations. Trusts are therefore encouraged to contact their local prison(s), IRC(s)s or CYPSE setting to discuss operational arrangements for undertaking video consultations.
- If you do not know the contact details of your local prison(s)/IRC(s)/CYPSE healthcare team please contact the NHSE/I Health and Justice Team at

england.healthandjustice@nhs.net. The Health and Justice Team will put you in touch with a relevant local contact. If you link with several secure settings in your area the team may be able to facilitate a group forum to discuss video consultations simultaneously with multiple providers.

How will telemedicine consultations work with my local prison(s)/IRC(s)/CYPSE?

- Trusts do not need to purchase any new software and do not require Visionable accounts.
- As the Visionable licences will sit with the secure and detained estate, the secure site will email the appointment URL invitation to the trust clinician's email address, allowing the trust clinician to join the video consultation as a 'guest'. In this way the activity at the prison/IRC/CYPSE end remains digitally auditable.
- To access prison/IRC/CYPSE appointments the clinician will be required to follow the steps below:
 - Click on the appointment URL received from the secure site
 - Choose 'open in web browser' (using Google Chrome only)
 - Enter name
 - Click 'join'. The clinician will then see a video screen of their own image until joined in the call by another user, at which point their image will be visible. The patient's chaperone may request the clinician shows ID to verify they are the clinician expected in the appointment.
- Multiple clinicians will be able to access a patient's video consultation if multidisciplinary input is required.

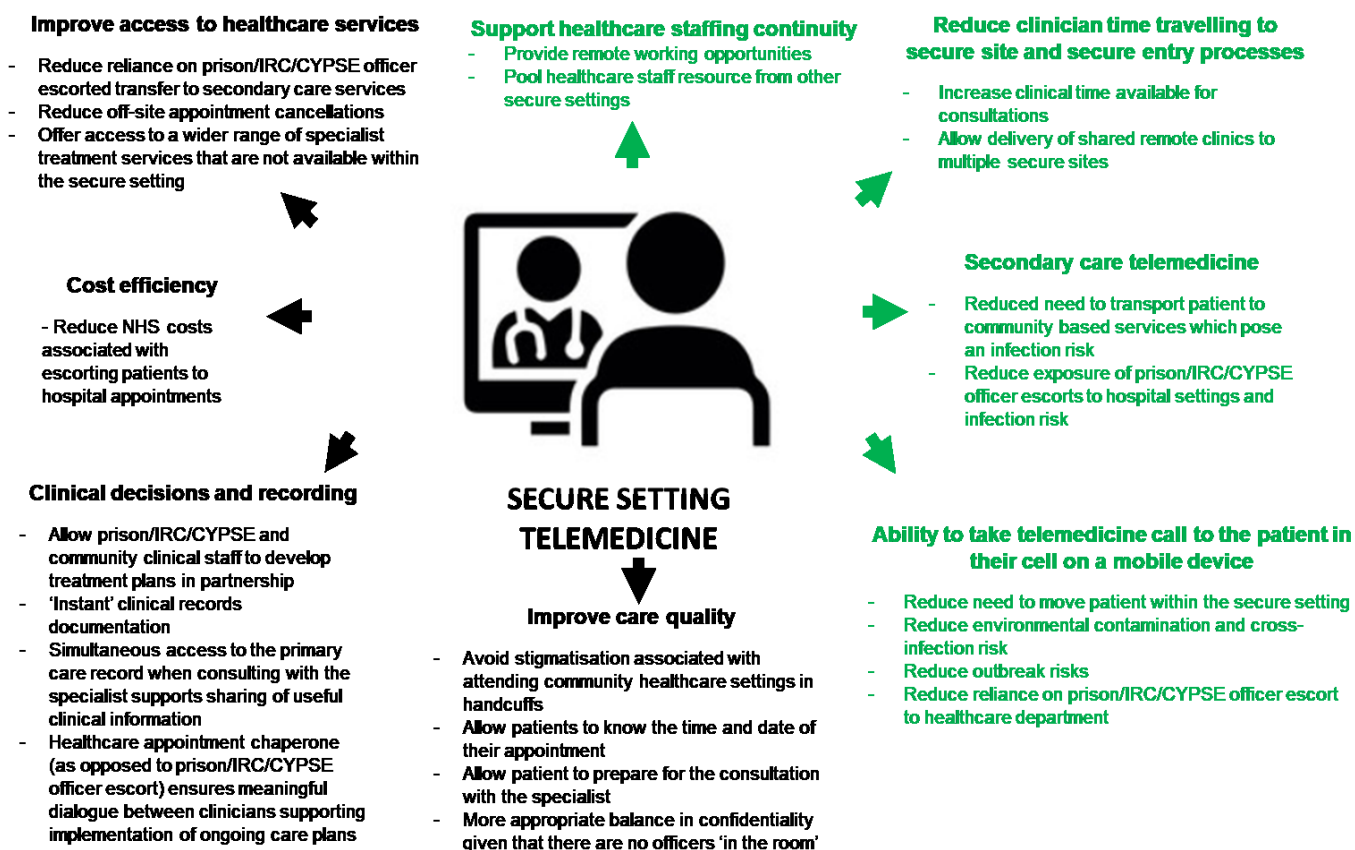
Why can't we use the video consultation platform/s our trust is currently using?

The HMPPS approval process for software typically takes over a year to complete. For software to be approved it must meet a range of requirements including the following:

- Must provide a complete digital audit trail of use, by individual staff member, to ensure misappropriation can be tracked in event of a breach (i.e. an unauthorised video call).
- To support auditability, every staff member in the secure and detained estate who chaperones a patient within a video consultation must have a unique, identifiable software login to ensure traceability in the event of misappropriation. Patients are not permitted to use the video consultation platform unsupervised and therefore will always be supervised by a healthcare chaperone who will log into the video consultation.
- Video consultations can only be made from the secure and detained estate to pre-approved contacts, preventing unauthorised users from joining the video consultation. Non-NHS email addresses need to be added by a central software administrator in the secure setting.

Benefits of telemedicine in secure settings

- Delivery of secondary care services to secure and detained estates via video consultation can improve access and quality of care for detained patients, as well as generating cost efficiencies.
- It can also bring numerous benefits to secure and detained healthcare teams, prison(s)/IRC(s)/CYPSE staff and trusts. For example, patient appointments are less likely to be cancelled or DNA and referral to treatment times are likely to reduce. This is true during both pandemic and non-pandemic contexts. Further benefits are highlighted below.



Additional information

- HMPPS has recently approved the use of 4G enabled tablets for telemedicine in secure settings. These tablets will also allow access to Systmone to support medication delivery to cells.
- Full guidance for clinicians working from home will shortly be published by the RCGP Secure Environments Group (RCGP SEG).
- Core requirements of remote telephone and video consultations are outlined below:
 - Clinical consultations must remain confidential and no recordings should be made.

- Remote clinicians can provide care to secure settings when working from home, however they should take care to ensure there are in a neutral environment e.g. no family photographs visible.
- The patient will require a chaperone in all video consultations with the clinician. This should be a member of the healthcare team, unless an emergency means a prison/IRC/CYPSE staff member must attend.
- If an appointment URL is forwarded to another clinician to deliver/join the patient consultation, the trust should notify the secure estate healthcare team to confirm the invitation was forwarded legitimately and was not a security breach.

Further resources

For further information and guidance, please request access to the [Future NHS Collaboration Platform for telemedicine in secure settings](#)

A five minute animation which explains what it's like to visit a hospital from prison, from the patient perspective: https://www.youtube.com/watch?v=IDag_RFus8&feature=youtu.be

The journal article which informed the animation above and provides further detail on prisoners experiences of secondary care: [https://www.thelancet.com/journals/eclinm/article/PIIS2589-5370\(20\)30160-7/fulltext](https://www.thelancet.com/journals/eclinm/article/PIIS2589-5370(20)30160-7/fulltext)

A commentary about the rollout of telemedicine in the secure and detained estate and its relation to digital equivalence: [https://www.thelancet.com/journals/landig/article/PIIS2589-7500\(20\)30164-3/fulltext](https://www.thelancet.com/journals/landig/article/PIIS2589-7500(20)30164-3/fulltext)

Further support

For further queries, information or support please contact england.healthandjustice@nhs.net

The NHSE/I Health and Justice Team can also provide further information on Visionable and associated operational documentation for use.

Annex 1

SCH = Secure Children's Home

IRC = Immigration Removal Centre

STC = Secure Training centre

YOI = Young Offenders Institution

List of secure sites:

Adel Beck SCH	HMP Erlestoke	HMP Peterborough (male)
Aldine House SCH	HMP Exeter	HMP Peterborough (female)
Atkinson SCH	HMP Featherstone	HMP Portland
Aycliffe SCH	HMP/YOI Feltham	HMP Preston
HMP Aylesbury	HMP Ford	HMP Ranby
Barton Moss SCH	HMP Forest Bank	HMP Risley
HMP Brinsford	HMP Foston Hall	HMP Rochester
Clare Lodge SCH	HMP Frankland	HMP Rye Hill
Clayfields House SCH	HMP Full Sutton	HMP Send
Gatwick IRC Brook House	HMP Garth	HMP Springhill
Gatwick IRC Tinsley House	HMP Gartree	HMP Stafford
Heathrow IRC Harmondsworth	HMP Grendon	HMP Stanford Hill
Heathrow IRC Colnbrook	HMP Guys Marsh	HMP Stocken
HMP Highpoint	HMP Hatfield	HMP Stoke Heath
HMP Wymott	HMP Haverigg	HMP Styal
HMP Altcourse	HMP Hewell	HMP Sudbury
HMP Ashfield	HMP High Down	HMP Swaleside
HMP Askham Grange	HMP Hindley	HMP Thameside
HMP Bedford	HMP Hollisley Bay	HMP The Mount
HMP Belmarsh	HMP Holme House	HMP The Verne
HMP Birmingham	HMP Hull	HMP Thorn Cross
HMP Bristol	HMP Humber	HMP Wakefield
HMP Brixton	HMP Huntercombe	HMP Wandsworth
HMP Bronzefield	HMP IOW	HMP Warren Hill
HMP Buckley Hall	HMP Isis	HMP Wayland
HMP Bullingdon	HMP Kirkham	HMP Wealstun
HMP Bure	HMP Kirklevington Grange	HMP/YOI Wetherby
HMP Channings Wood	HMP Lancaster Farms	HMP Whatton
HMP Chelmsford	HMP Leeds	HMP Whitemoor
HMP Coldingley	HMP Leicester	HMP Winchester
HMP/YOI Cookham Wood	HMP Lewes	HMP Woodhill
HMP Dartmoor	HMP Leyhill	HMP YOI Drake hall
HMP Deerbolt	HMP Lincoln	HMP&YOI Swinfen Hall
HMP Doncaster	HMP Lindholme	Kyloe House SCH
HMP Dovegate	HMP Littlehey	Lansdowne SCH
HMP Downview	HMP Liverpool	Lincolnshire SCH
HMP Durham	HMP Low Newton	HMP Long Lartin
HMP East Sutton Park	HMP Lowdham Grange	Manchester Short Term Holding Facility
HMP Eastwood Park	HMP Maidstone	Marydale SCH
HMP Elmley	HMP Manchester	Medway STC
	HMP Moorland	Morton Hall IRC
	HMP Newhall	Rainsbrook STC
	HMP Northumberland	Swanwick Lodge SCH
	HMP Norwich	Vinney Green SCH
	HMP Nottingham	HMP/YOI Werrington
	HMP Oakwood	Wormwood Scrubs
	HMP Onley	Yarls Wood IRC
	HMP Pentonville	