

Woburn Ward – Reducing Restrictive Practice



Woburn Ward

- High dependency ward
- Mental illness pathway
- 13 patients
- Mixture of patients on long term segregation/short term seclusion and unlocked.



Patient X Story 2018

Patient X

Nursed on LTS

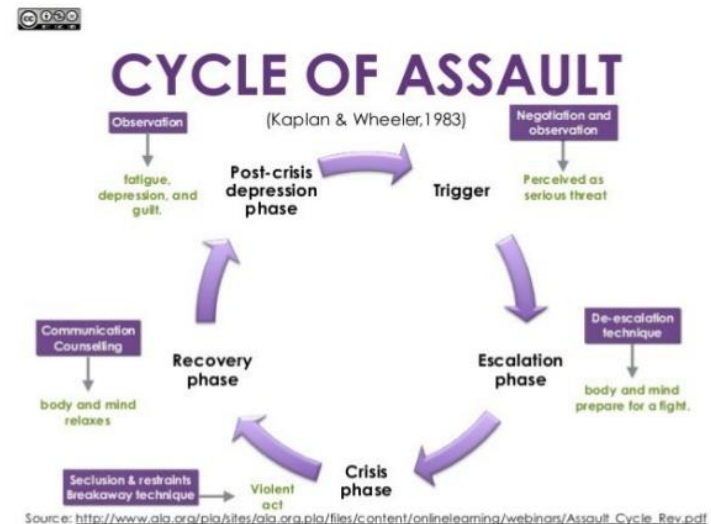
Minimal engagement with on and off ward activities

Non-compliant with staff

Chronically psychotic

Delusional beliefs

Frequent and significant violent behaviour



Patient X Story 2019

Patient X

LTS terminated

Engaging in off and on ward activities

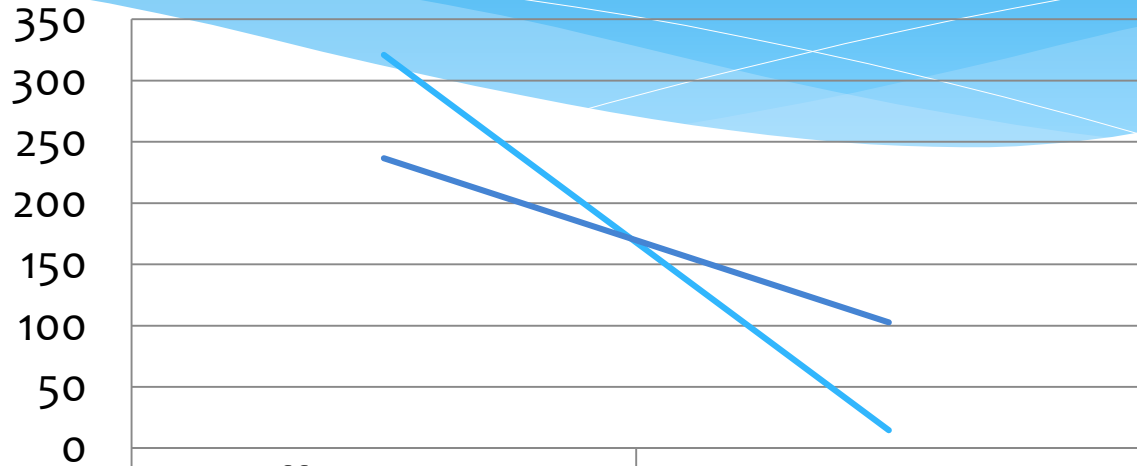
Compliant with medication

Significant improvement in physical health

Improvement in social and family relationships



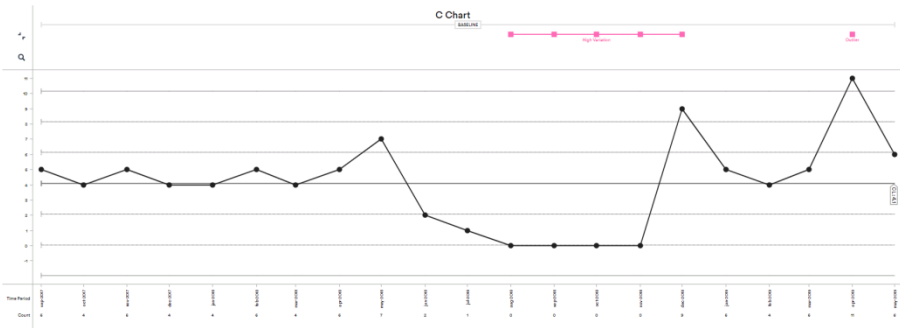
Patient X Activity Engagement Hours



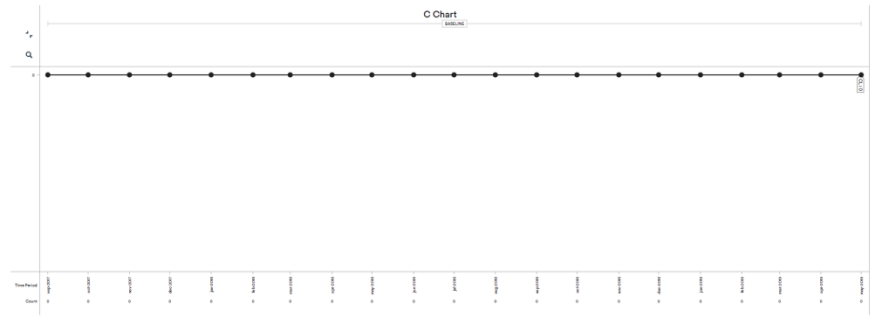
	Offered hours	Taken hours
— October 2018 - March 2019	321	14.5
— April 2019 - July 2019	236.75	102.75

Data Collection for Woburn

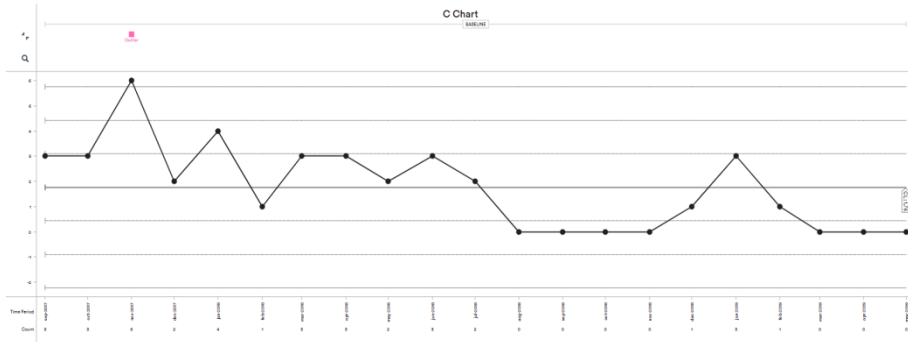
Seclusions



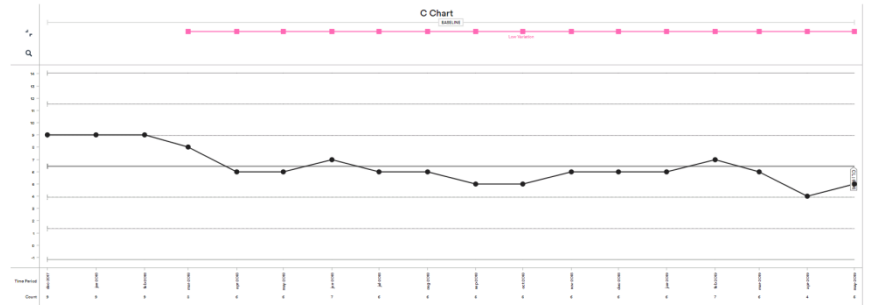
Rapid Tranquilisation



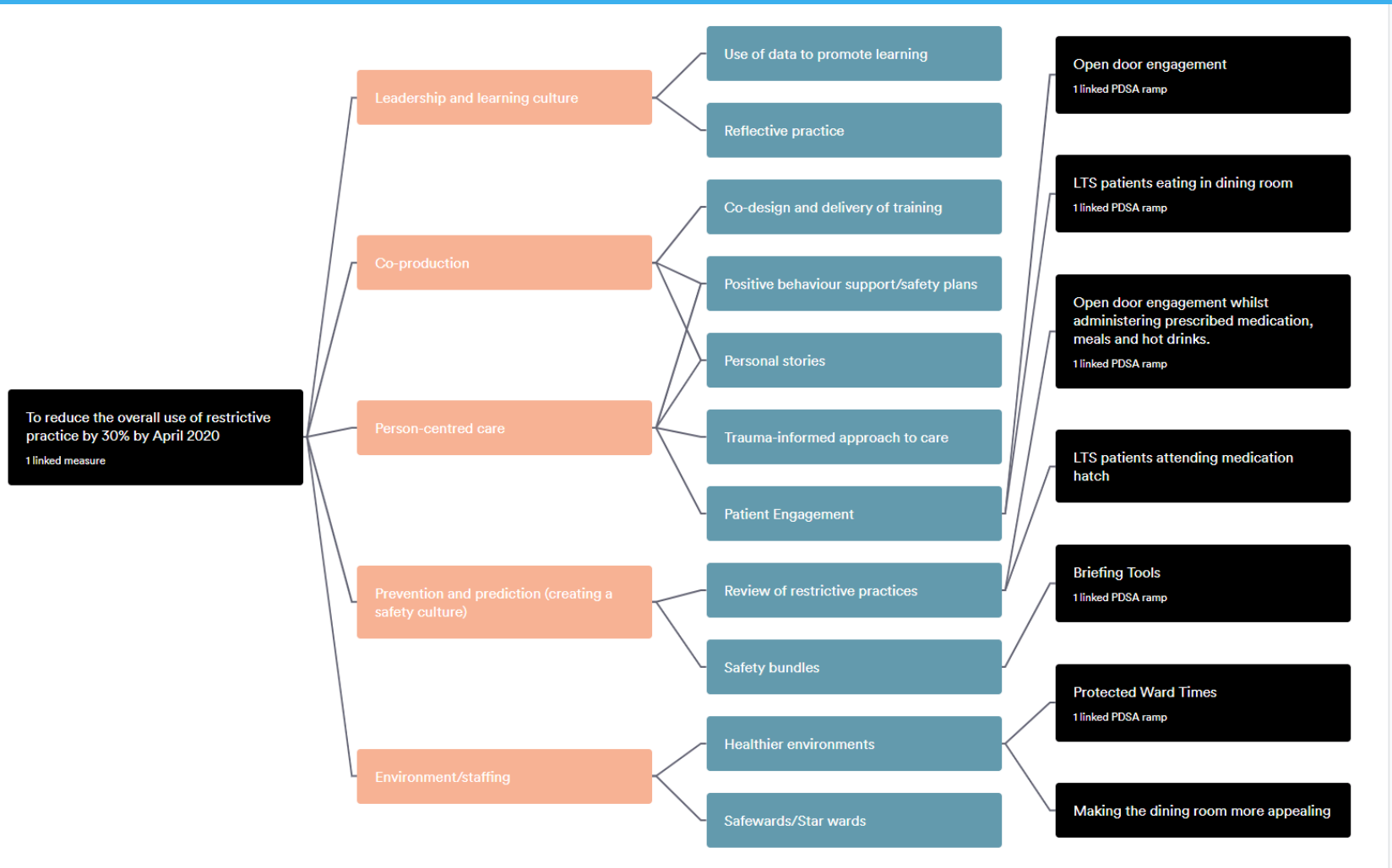
Restrains



Long Term Seclusion

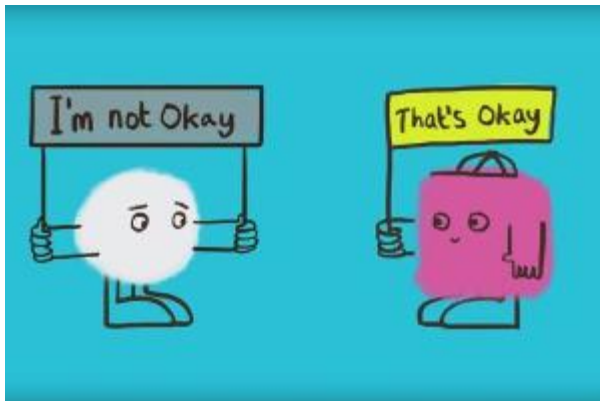


Driver Diagram – Woburn Ward



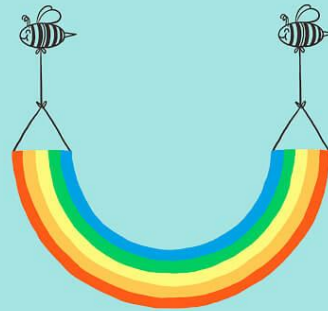
Impact on Ward Atmosphere

- Positive atmosphere on the ward
- Staff morale improvement
- More patient engagement in activities
- More off ward activities
- Patient football matches
- Significant decrease in number of LTS patients
- Staff using positive de-escalation skills
- Patients utilising own coping strategies (i.e., self seclusion, 1:1's, PRN)



Questions?

If I can survive the war
that I battle with myself,
I can survive anything.



Be Positive

HealthyPlace.com