

North Central London  
Suicide Prevention  
**Data and Insights Sub-Group**

**National Collaborating Centre for Mental Health**

**Suicide Prevention Session**

2<sup>nd</sup> December 2021

# Presenters

- Gabriella Baker – Thrive London

[gabriella.baker@nhs.net](mailto:gabriella.baker@nhs.net)

- Jane Brett-Jones – London Borough of Camden and Islington

[Jane.Brett-Jones@islington.gov.uk](mailto:Jane.Brett-Jones@islington.gov.uk)

- Seher Kayikci - London Borough of Barnet

[Seher.Kayikci@barnet.gov.uk](mailto:Seher.Kayikci@barnet.gov.uk)

# About Thrive LDN

- ❖ **Thrive LDN** was launched In July 2017 by the Mayor of London, alongside other health and care partners.
- ❖ **The aim:** to create a collective action across London, for everyone to speak openly about mental health and have an equal opportunity to thrive.
- ❖ At its core it is **a participation-driven partnership** that engages with and responds to the needs and insights of Londoners.
- ❖ Since March 2020, we have been coordinating the **public mental health response** to the COVID-19 pandemic on behalf of Public Health England (London) and wider partners.
- ❖ Thrive LDN is the **regional lead for suicide prevention in London** on behalf of NHS England and facilitate the multi-agency Thrive LDN Suicide Prevention Group to deliver citywide projects to prevent suicide and support those affected.



Explore more:

[www.thriveldn.co.uk/resources/insights2021](http://www.thriveldn.co.uk/resources/insights2021)

# Suicide prevention actions for London

Suicide prevention  
partnerships



Data insights

Community  
intervention



Enhanced signposting  
and support

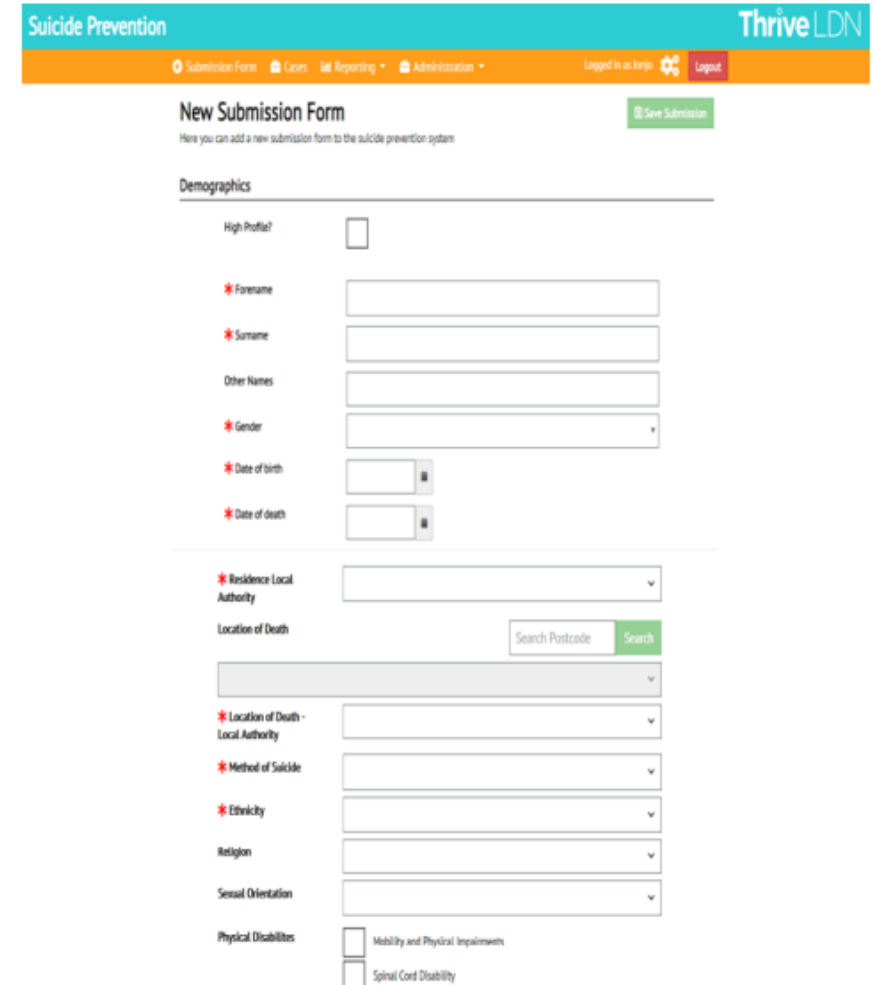
Education



Resilience

# Platform functionality

- ❖ Submission form populated predominately by the host following a suspected suicide
- ❖ Minimised mandatory fields and free text areas for speed of completion and analytics; facilitates real-time understanding of incidence, methods and demographic trends
- ❖ Notification to relevant Local Authority, NHS organisations and referral to ICS suicide bereavement services
- ❖ Partners submit enquiry forms to clarify e.g. prior mental or physical health conditions
- ❖ Reporting by location → multi-agency suicide prevention groups



**Suicide Prevention** Thrive LDN

Submission Form Cases Reporting Administration Logged in as [user] Logout

### New Submission Form

Here you can add a new submission form to the suicide prevention system Save Submission

**Demographics**

High Profile?

\* Forename

\* Surname

Other Names

\* Gender

\* Date of birth

\* Date of death

\* Residence Local Authority

Location of Death   Search Postcode

\* Location of Death - Local Authority

\* Method of Suicide

\* Ethnicity

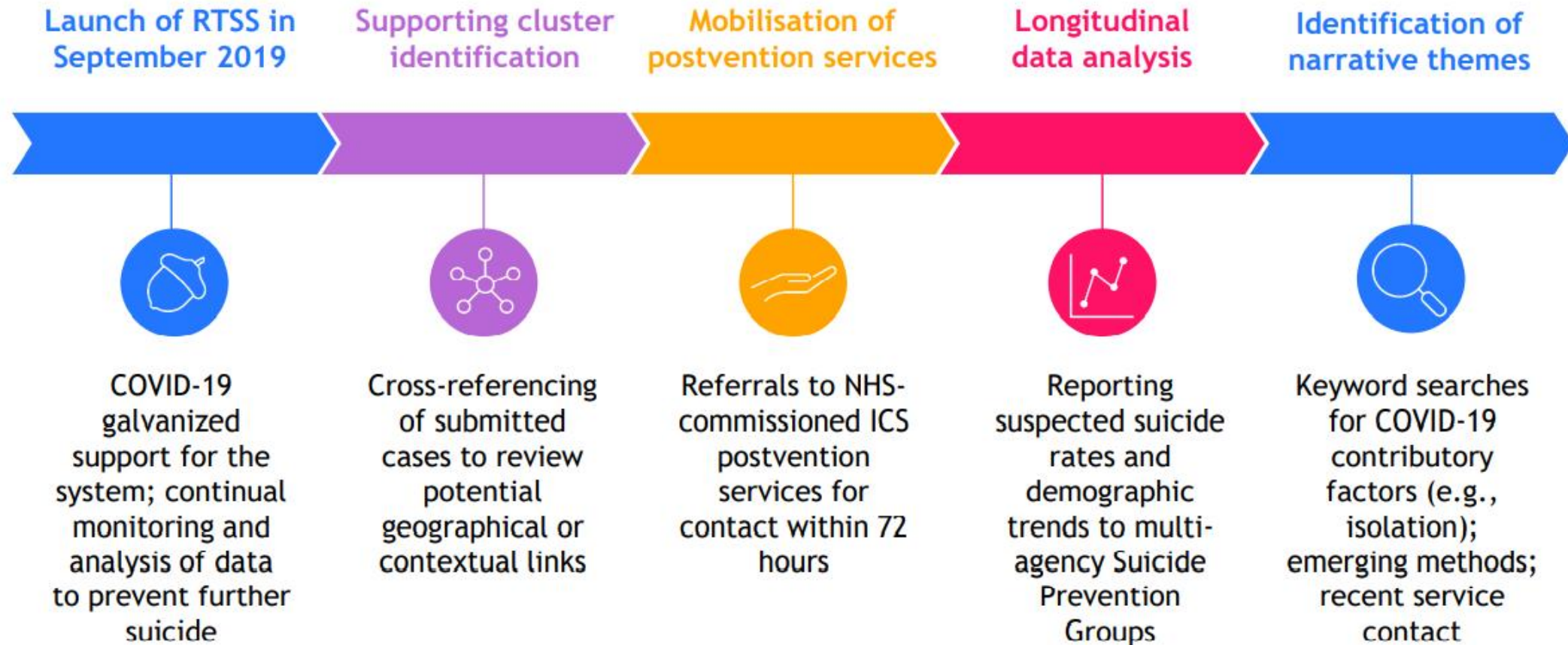
Religion

Sexual Orientation

Physical Disabilities  Mobility and Physical Impairments  Spinal Cord Disability



# Real-Time Surveillance during COVID-19



# Next steps for real-time data



## Proof of concept

Existing **RTSS** for suspected suicide demonstrates the value of **data** and **multi-agency collaboration** in prevention.



## Reducing suicide within services

Expansion to monitor self-harm and attempted suicide as **significant risk factors** for suicide, helping to safeguard patients in MH services and acute hospitals.



## Integration

Routine utilisation of data to **inform cluster response** and longer-term strategy. Inclusion of primary care and the prison system.



## Longitudinal analysis

Improve accuracy of reporting of ethnicity, gender identity, and pre-existing mental health conditions to inform **earlier intervention** for disproportionately at-risk groups.

# Aim

- To use the resources, perspectives, and collective voice of the NCL subgroup to improve the quality and use of suicide data, and to generate actionable insights that will improve the suicide prevention activities of the NCL programme and locally in each borough.



# Current membership

London-wide: Healthy London Partnership, Metropolitan Police Service Mental Health Lead

NCL Suicide Prevention Strategy Group

Bereavement support and lived experience representatives

Barnet Council

Enfield Council

Haringey Council

Camden Council

Islington Council

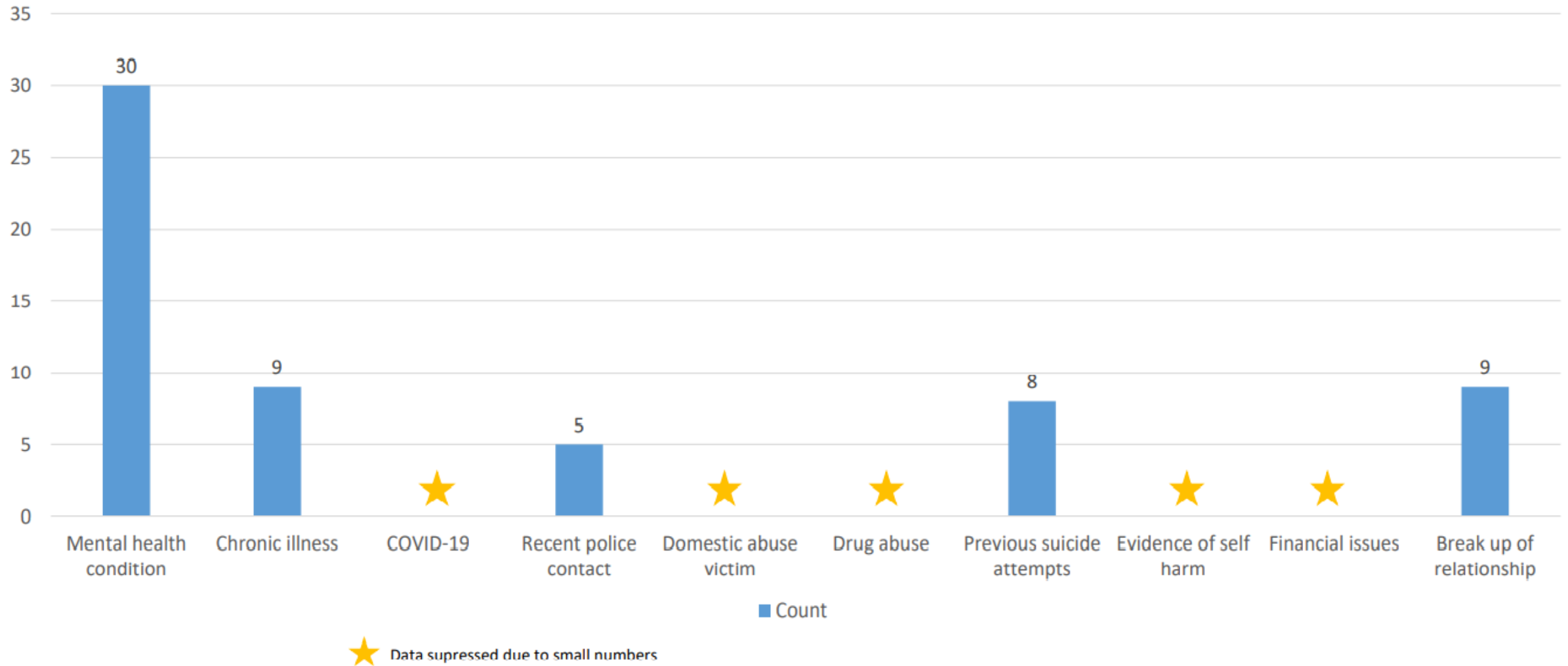
# Draft Scope

Domain	Data Quality and Governance	Local data monitoring and event response	NCL insights and improvement	Impact measurement
Description	Broadening the data sources used to draw insights, improving the use and quality of RTS data, considering implications for information governance.	The process by which local boroughs monitor RTS data, act on events where indicated, and share learnings generated from this monitoring and response.	The process by which NCL data are reviewed to identify signals and generate insights, and how these influence NCL and local suicide prevention activities.	This domain includes work to monitor the effectiveness of the subgroup's activities.
Scope of subgroup activities	<ul style="list-style-type: none"> <li>o Advocacy</li> <li>o Awareness and training</li> </ul>	<ul style="list-style-type: none"> <li>o Process oversight and quality improvement</li> <li>o Facilitate sharing of lessons</li> </ul>	<ul style="list-style-type: none"> <li>o Regular review of data</li> <li>o Sharing of insights</li> <li>o Influence NCL and local prevention activities.</li> </ul>	<ul style="list-style-type: none"> <li>o Strategy</li> <li>o Monitoring</li> <li>o Evaluation</li> </ul>

# Draft objectives

Domain	Data Quality and Governance	Local data monitoring and event response	NCL insights and improvement	Impact measures
Objectives	<ol style="list-style-type: none"> <li>1. Collaborate with partners to improve RTS data quality at:               <ul style="list-style-type: none"> <li>• Collection and input (MPS, NHS)</li> <li>• Display and analysis (Thrive Hub).</li> </ul> </li> <li>2. Scope options for additional local data that could improve NCL reviews or local monitoring.</li> <li>3. Ensure correct information governance structures are in place for all activities of the subgroup.</li> </ol>	<ol style="list-style-type: none"> <li>1. Establish a NCL standardised protocol that can be used by local PH teams to monitor RTS data and act upon relevant events at a borough level.</li> <li>2. Quality improvement of the local monitoring protocol.</li> <li>3. Establish a standardised process for aggregating and sharing local learnings.</li> </ol>	<ol style="list-style-type: none"> <li>1. Develop systems and procedures to review and analyse NCL data and share insights.</li> <li>2. Routinely review RTS data across NCL to identify signals and generate insights.</li> <li>3. Establish a process for the outcome of the NCL reviews to inform and influence local suicide prevention plans and activities.</li> <li>4. Establish a process for the outcome of the NCL reviews</li> </ol>	<ol style="list-style-type: none"> <li>1. Contribute to the development of the data and insights</li> <li>2. Agree a process for monitoring the effectiveness of the subgroup group outcome measures</li> </ol>

# Risk factors



# Outputs:

---

Regular monitoring of borough level data and reviews across NCL

---

Monitoring locations to identify potential hot spot and mitigation

---

Monitoring methods of suicide and working with partners to address emerging methods

---

Possible cluster identification and defining the immediate response

---

Routine review of data enhancing multi-agency learning and improving relationship with key agencies

---

Qualitative data – identification of common themes and triangulation where possible

---

Trusted data – very rich contextual information

---

Linking families and friends to Support After Suicide Service



# Caveats

---

The surveillance system includes both confirmed and suspected suicides.

---

The system is still in development, though, since March 2021 reporting has improved.

---

Small numbers makes it difficult make any conclusions about the trends.

---

Difficult to detect significant differences between nationally and locally important risk factors.

---

Looking to aggregate data across NCL