
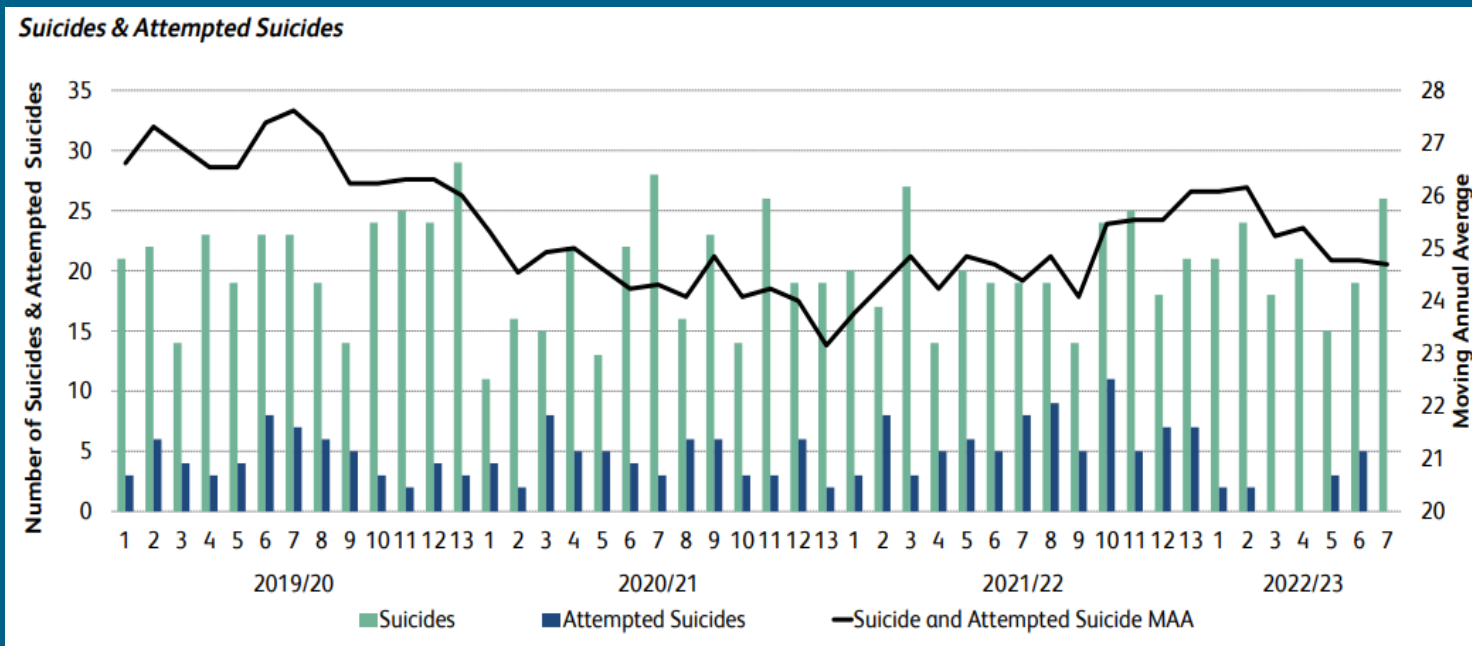


Managing rail suicide and vulnerable presentations



Louise McNally
Suicide & Trespass Prevention Lead
Network Rail

Current Status of Rail Suicide



Rail suicide occurs every 34 hours on average.

FY 2021/22:

- 254 suspected suicides.
- Over 590,000 minutes of delay
- Circa £36m annual cost
- Cost per suicide £184,000

4% - 5% of all national suicides.

Predominantly males (35 – 55)
Increased young males and female suicides.

Increase in presentations by those who are in distress/crisis but not suicidal.

Impacts on workforce wellbeing and sickness levels.

Disproportionate reporting due to passenger disruption can cause copycat incidents

High number of locations where multiple suicides have occurred.

40% - 50% of attempts do not involve a train (ie. bridges).

Strategic Approach

A large white number '1' centered within a light blue circle, which is itself set against a dark blue background.

Protect those who are vulnerable from harm

A large white number '2' centered within a light green circle, which is itself set against a green background.

Prevent suicide or related events on the railway network

A large white number '3' centered within a light teal circle, which is itself set against a teal background.

Mitigate the impact of incidents to passengers through an effective and collective response and recovery

A large white number '4' centered within a light purple circle, which is itself set against a purple background.

Look after the wellbeing of staff who directly or indirectly deal with these traumatic incidents

A large white number '5' centered within a light blue circle, which is itself set against a blue background.

Play our part in breaking the stigma attached to mental illness and promote help seeking behaviour

Strategic Focus Areas

Collaboration

- Collaboration and alignment between rail industry partners.
- Increased collaboration and integration with external stakeholders such as BTP, NHS and Local Authorities to improve our collective knowledge and ability to understand, manage and mitigate risk.

Intelligence

- Enhanced data analysis, risk assessment processes and tools to:
- Improve decision making around interventions.
 - support the creation of targeted action plans and business cases for funding.
 - improve our response to and recovery from incidents.

Behavioural Change

- Promote and signpost mental health support upstream.
- Support interventions for those in crisis.
- Create greater awareness of suicide and mental health issues to break the stigma attached to mental ill health.

Targeted Action

Creation of prioritised organisational trespass and suicide management plans, highlighting priority and escalated locations and locations of emerging risk. Consideration and implementation of mitigation

Innovation

Explore and where viable, implement new and innovative solutions to enable improved prediction response and recovery when they occur.

Rail Suicide Prevention Activity



Collaboration

Rail Industry	Multi Agency Suicide Prevention Groups	External Partnerships
<ul style="list-style-type: none"> • Network Rail • BTP • Train Operators • Freight Operators • RDG • Rail Partners • RSSB 	<ul style="list-style-type: none"> • Charity Partnerships • Local authorities • Public health • Clinical commissioning groups • Primary care providers • Voluntary sector organisations • Mental health care providers • Emergency services • Criminal justice services 	<ul style="list-style-type: none"> • Other operators/organisations encountering suicide and trespass with a mental health component. • International Rail Organisations • Universities and other academic institutions • Suppliers of technology and innovative solutions • Mental health professionals, social workers and occupational therapists. • Cross-party parliamentary working groups

Clear Line of sight from central support functions to frontline operations

Best Practise and Lessons Learnt Sharing

Multi Agency Approach

Rail Suicide Prevention Activity



Intelligence

Data - Incidents, delay impact, cost impact

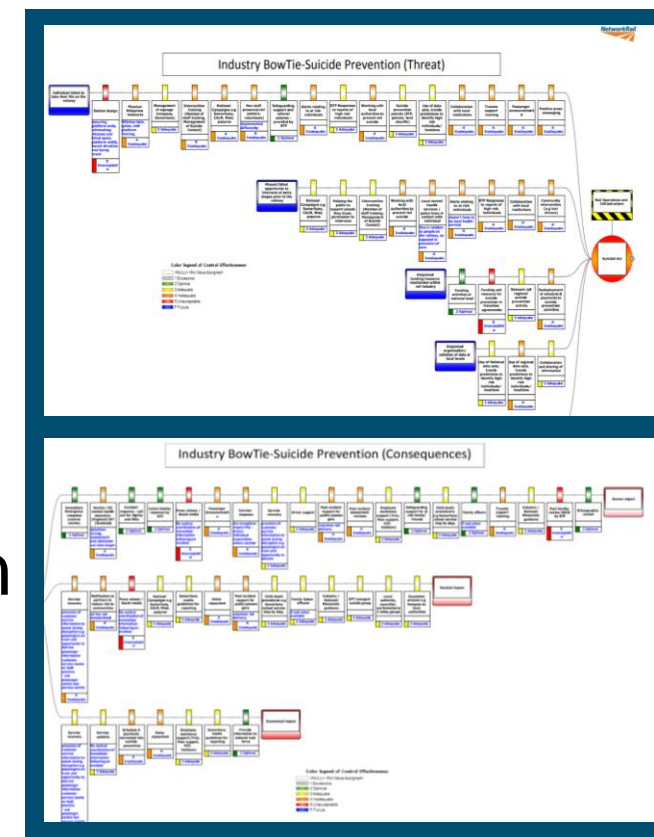
Bowtie - Prioritised approach to risk control

Research - Structured research

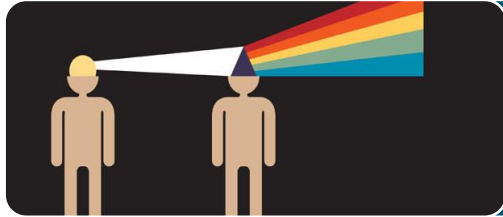
- Suicide and Life-Saving Interventions (Lisa Marzano, Middlesex University)
- Dissuasion Techniques and Applicability to the Railway (James Bannerman)
- Psychological Autopsy Study, Middlesex University.

Future risk modelling - light touch intervention

- Anonymised data supplied by Samaritans, Shout and Chasing the Stigma
- Focus on key risk factors nationally



Rail Suicide Prevention Activity



Behavioural Change

Training – Suicide intervention / vulnerability trauma Support

Campaigns - National and local

Community Outreach

Media Monitoring

Industry Culture - Trespass reporting and Intervention / Trauma support



Rail Suicide Prevention Activity



Targeted Action

Escalation Process

Boundaries

High frequency presenters

BTP, security & welfare teams, MH nurses

Cameras, sensors, alerts

Post incidents support

Workforce trauma



Rail Suicide Prevention Activity



Innovation

Technology Development

Innovation

Trials



Questions ?