



# International Diploma in Older Adults' Mental Health



  
**RC  
PSYCH**  
ROYAL COLLEGE OF  
PSYCHIATRISTS



The Royal College of Psychiatrists (RCPsych) works to secure the best outcomes for people with mental illness, learning difficulties and developmental disorders by promoting excellent mental health services, training mental health professionals, promoting quality and research, setting standards and being the voice of psychiatry globally.

We are a professional medical and educational body responsible for supporting psychiatrists throughout their careers from training through to retirement.

As Dean, my overarching vision is to explicitly link the Royal College of Psychiatrists' education offer with patient outcomes.

This important global initiative will help us build and develop a skilled workforce in the critical area of old age psychiatry.

Prof Subodh Dave, Dean

We are committed to raising the profile of older adults' mental health, both nationally and globally.

By sharing our experiences of good practice, we can equip psychiatrists to meet the mental health needs of the increasing older adult population around the globe.

Dr Mani Santhana Krishnan  
Chair, Faculty of Old Age Psychiatry

## **i** About the programme

The world's population is ageing fast. The WHO report that, between 2015 and 2050, the proportion of the world's population over 60 years will nearly double from 12% to 22%. By 2050, two-thirds of the world's population over 60 years will live in low- and middle-income countries.

Governments face major challenges to ensure their health and social systems are prepared for this demographic shift. Consequently, there is a fast-growing need for healthcare professionals to have relevant, up-to-date training and knowledge within older adults' mental health.

The RCPsych International Diploma in Older Adults' Mental Health and Dementia is a new knowledge enhancement programme, designed for overseas doctors wishing to upskill or refresh their understanding of how the most common mental disorders in older adults present and are managed.


This course consists of 9 modules delivered over a period of 12 months and is designed to be practical and clinically focused.

The programme emphasises an international focus and will provide opportunity for learners to broaden their understanding of the clinical and service-related complexities of working within older adults' mental health.

In addition, learners will contribute to an international community of practice for psychiatry of older people, providing the skills and knowledge to develop services for older people within their own clinical practice, particularly in limited resource settings.

### Key Information

<b>Commitment</b>	1 year, part-time. 42 weeks, up to 4 hours a week
<b>Format</b>	100% online
<b>Course cohort</b>	Max 30 learners
<b>Applications open</b>	March 2024
<b>Proposed course start date</b>	September 2024
<b>Fees</b>	£6,000



## Who is the programme aimed at?

Doctors outside the UK including:

- Psychiatrists
- Doctors in other relevant medical specialties e.g. general practitioners, geriatricians, family doctors, neurologists aspiring to practise in this field



## What will you gain from the programme?

- Confidence in the assessment and diagnosis of mental disorders presenting in older adults.
- Ability to effectively and safely prescribe medications used within older adults' mental health.
- Understanding of the clinical and service-related complexities of working within older adults' mental health.
- Skills and resources to develop services for older people within your own clinical practice.
- An approach to understanding older adults' mental health from a global perspective and an appreciation of the challenges in the delivery of high-quality healthcare in diverse socioeconomic settings.
- On successful completion of the course, candidates will be awarded the Royal College of Psychiatrists' International Diploma in Older Adults' Mental Health and Dementia.





## Programme benefits



**Access to a community of global experts in older adults' mental health.** Our faculty has been selected based on their subject expertise and experience to ensure the highest standards of educational excellence.



**Participants from across the globe.** Study together, learning from each other's experiences and challenges.



**Easy-to-use learning platform.** The course is delivered using the RCPsych web-based platform, which offers a modern and flexible learning experience to students with access to all the learning resources at any time.



**Skills acquisition, employability and career progression** in fields related to older adults' mental health.



**Flexibility around work and home commitments** and accessibility of content at a time and pace that suits each learner.



**Support of a dedicated course administrative team.**



## Programme entry requirements

- Primary medical qualification from a recognised medical institution. Please visit the World Directory of Medical Schools.
- Three years' experience working as a psychiatrist, or as a doctor in another relevant medical speciality.
- Professional medical registration with your local regulatory body.
- Recommended English language proficiency equivalent to IELTS Level 6.
- Professional experience in older adults' mental health or aspiration to practice in older adults' mental health.

*If you would like advice about requirements before applying, please contact us.*





## How will the programme be delivered?

This interactive programme will be delivered fully online through a model which blends self-directed learning with tutor-led group learning including:

- eLearning modules
- tutor moderated discussion forums, emphasising peer-to-peer knowledge and experience sharing
- regular webinars so learners can interact with experts in the field
- interactive case-based and problem-based learning
- written reflections encouraging participants to engage critically and apply the learning to their experience and practice in their own healthcare systems
- access to an extensive online library
- formative exercises and assignments
- individualised feedback points during the programme
- a summative piece of written work at the end of the course



## What is expected of learners?

To successfully complete the programme, you will be expected to:

- regularly login and participate in the course
- spend approximately 15 hours per module (3 to 4 hrs a week) on your studies
- complete a written reflective activity at the end of each module
- participate in discussion forums throughout the course
- attend monthly live sessions and actively participate in discussions
- produce a written piece of summative work at the end of the course





## What does the programme cover?

Introduction to **older adults' mental health**

**Assessment** in older adults

Assessment and treatment of **Dementia**

**Non-pharmacological management** of Dementia

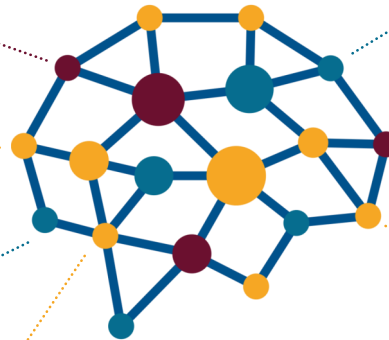
**Prescribing** in older adults

**Mood and Anxiety Disorders**

**Delirium**

**Psychotic disorders** in older adults

**Neuropsychiatric disorders** in older adults





Register your interest at  
**internationaldiploma@rcpsych.ac.uk**

---



<https://www.rcpsych.ac.uk/international>



rcpsychINTL



**International  
Diploma**  
*in Older Adults'  
Mental Health*

